

Addendum Number: 05

Addendum Issue Date: May 6, 2025

Owner: Robinson CUSD #2

Project Name: Robinson Washington Elementary
Renovation & Addition

Project Number: 02401781.001

Containing: 10 Pages; 9 Drawings; 0 Specifications Sections

*This addendum amends the drawings and specifications of the above reference project and is hereby incorporated into the contract documents as part thereof. Bidders must acknowledge receipt of this Addendum in the space provided on the Bid Form. **FAILURE TO DO SO MAY SUBJECT BIDDER TO DISQUALIFICATION.***

General:

1. The interior drawing revisions that were a part of the previously issued addendum are attached. Attachment was omitted from addendum 04 by mistake. Please refer to addendum 04 for an explanation of revisions.

Drawings:

1. Interior drawings listed within addendum 04 – refer to addendum 04 for an explanation of drawing revisions.

Specifications:

None

END OF ADDENDUM

Issued By:

FARNSWORTH GROUP, INC.
Annapoorna Halepatali
Project Architect

Attachments:

Drawings: I0.1, I0.2, I1.1, I1.1A, I3.1, I4.1A, I8.1, I8.3, R0.1

Specifications:

OVERALL PRODUCT FINISH SCHEDULE										
TAG	MANUFACTURER	PRODUCT LINE	SIZE	COLOR	FINISH	GROUT		SUPPLIER / INSTALLER	NOTES	
CEILING										
ACT-1	ARMSTRONG CEILINGS	SEE SPECIFICATIONS	24" X 24"	WHITE	GRID: WHITE	-	-	CFCI	-	
ACT-2	ARMSTRONG CEILINGS	SEE SPECIFICATIONS	24" X 48"	WHITE	GRID: WHITE	-	-	CFCI	-	
ACT-3	ARMSTRONG CEILINGS	SEE SPECIFICATIONS	6" X 48"	WHITE	GRID: WHITE	-	-	CFCI	-	
ACT-4	ARMSTRONG CEILINGS	AXIOM TRIM	8"H	PAINTED TO MATCH P-3	-	-	-	CFCI	-	
ACT-5	ARMSTRONG CEILINGS	AXIOM TRIM	8"H	PAINTED TO MATCH P-4	-	-	-	CFCI	-	
ACT-6	ARMSTRONG CEILINGS	AXIOM TRIM	8"H	PAINTED TO MATCH P-5	-	-	-	CFCI	-	
ACT-7	ARMSTRONG CEILINGS	AXIOM TRIM	8"H	PAINTED TO MATCH P-6	-	-	-	CFCI	-	
ACT-8	ARMSTRONG CEILINGS	AXIOM TRIM	8"H	PAINTED TO MATCH P-7	-	-	-	CFCI	-	
ACT-9	ARMSTRONG CEILINGS	AXIOM TRIM	8"H	PAINTED TO MATCH P-8	-	-	-	CFCI	-	
ACT-10	ARMSTRONG CEILINGS	AXIOM TRIM	20"H	WHITE	-	-	-	CFCI	-	
P-1	SHERWIN WILLIAMS	SEE SPECIFICATIONS	-	SW7570 EGRET WHITE	SEE SPECIFICATIONS	-	-	CFCI	-	
P-2	SHERWIN WILLIAMS	SEE SPECIFICATIONS	-	SW7641 COLONNADE GRAY	SEE SPECIFICATIONS	-	-	CFCI	-	
P-3	SHERWIN WILLIAMS	SEE SPECIFICATIONS	-	SW6314 LUXURIOUS RED	SEE SPECIFICATIONS	-	-	CFCI	-	
P-4	SHERWIN WILLIAMS	SEE SPECIFICATIONS	-	SW6621 EMOTIONAL	SEE SPECIFICATIONS	-	-	CFCI	-	
P-5	SHERWIN WILLIAMS	SEE SPECIFICATIONS	-	BENJAMIN MOORE, #HC-10 STUART GOLD	SEE SPECIFICATIONS	-	-	CFCI	-	
P-6	SHERWIN WILLIAMS	SEE SPECIFICATIONS	-	SW6717 LIME RICKEY	SEE SPECIFICATIONS	-	-	CFCI	-	
P-7	SHERWIN WILLIAMS	SEE SPECIFICATIONS	-	PPG, #PPG1146-5 PALMETTO	SEE SPECIFICATIONS	-	-	CFCI	-	
P-8	SHERWIN WILLIAMS	SEE SPECIFICATIONS	-	SW9149 INKY BLUE	SEE SPECIFICATIONS	-	-	CFCI	-	
P-9	SHERWIN WILLIAMS	SEE SPECIFICATIONS	-	SW7005 PURE WHITE	SEE SPECIFICATIONS	-	-	CFCI	-	
WALL										
AP-1	TURF DESIGN	WALL SCAPE, BARCELONA PET PANEL, 9MM	SEE ELEVATIONS: 48"x120" PANELS	15 MERLOT	-	-	-	CFCI	12	
AP-2	BUZZI SPACE	BUZZILAND ACOUSTIC WALL PANEL	MEDIUM, 39.37" DIA	TRCS BERRY #4017	-	-	-	CFCI	-	
AP-3	BUZZI SPACE	BUZZILAND ACOUSTIC WALL PANEL	SMALL, 31.5" DIA	TRCS HAZY ORANGE #9404	-	-	-	CFCI	-	
AP-4	BUZZI SPACE	BUZZILAND ACOUSTIC WALL PANEL	LARGE, 47.24" DIA	TRCS HAZY YELLOW #9309	-	-	-	CFCI	-	
AP-5	BUZZI SPACE	BUZZILAND ACOUSTIC WALL PANEL	MEDIUM, 39.37" DIA	TRCS HAZY PISTACHE #9702	-	-	-	CFCI	-	
AP-6	BUZZI SPACE	BUZZILAND ACOUSTIC WALL PANEL	SMALL, 31.5" DIA	TRCS OCEAN #6091	-	-	-	CFCI	-	
AP-7	BUZZI SPACE	BUZZILAND ACOUSTIC WALL PANEL	LARGE, 47.24" DIA	TRCS BLUE #6075	-	-	-	CFCI	-	
EX	SHERWIN WILLIAMS	SEE SPECIFICATIONS	-	MATCH EXISTING ADJACENT PAINT COLOR	SEE SPECIFICATIONS	-	-	CFCI	-	
FRP-1	MARLITE	STANDARD FRP, CLASS A	-	WHITE	PEBBLED	-	-	CFCI	-	
P-1	SHERWIN WILLIAMS	SEE SPECIFICATIONS	-	SW7570 EGRET WHITE	SEE SPECIFICATIONS	-	-	CFCI	-	
P-2	SHERWIN WILLIAMS	SEE SPECIFICATIONS	-	SW7641 COLONNADE GRAY	SEE SPECIFICATIONS	-	-	CFCI	-	
P-3	SHERWIN WILLIAMS	SEE SPECIFICATIONS	-	SW6314 LUXURIOUS RED	SEE SPECIFICATIONS	-	-	CFCI	-	
P-4	SHERWIN WILLIAMS	SEE SPECIFICATIONS	-	SW6621 EMOTIONAL	SEE SPECIFICATIONS	-	-	CFCI	-	
P-5	SHERWIN WILLIAMS	SEE SPECIFICATIONS	-	BENJAMIN MOORE, #HC-10 STUART GOLD	SEE SPECIFICATIONS	-	-	CFCI	-	
P-6	SHERWIN WILLIAMS	SEE SPECIFICATIONS	-	SW6717 LIME RICKEY	SEE SPECIFICATIONS	-	-	CFCI	-	
P-7	SHERWIN WILLIAMS	SEE SPECIFICATIONS	-	PPG, #PPG1146-5 PALMETTO	SEE SPECIFICATIONS	-	-	CFCI	-	
P-8	SHERWIN WILLIAMS	SEE SPECIFICATIONS	-	SW9149 INKY BLUE	SEE SPECIFICATIONS	-	-	CFCI	-	
P-10	SHERWIN WILLIAMS	SEE SPECIFICATIONS	-	SW7643 PUSSYWILLOW	-	-	-	CFCI	-	
PL-5	NEVAMAR	HIGH PRESSURE PLASTIC LAMINATE (HPL), MARKER BOARD	-	BURGUNDY #S-1015	GLOSS (GL)	-	-	CFCI	-	
PL-6	NEVAMAR	HIGH PRESSURE PLASTIC LAMINATE (HPL), MARKER BOARD	-	CAFE SIENNA #SO3300	GLOSS (GL)	-	-	CFCI	-	
PL-7	NEVAMAR	HIGH PRESSURE PLASTIC LAMINATE (HPL), MARKER BOARD	-	AQUA LAGOON #S-5059	GLOSS (GL)	-	-	CFCI	-	
PL-8	FORMICA	HIGH PRESSURE PLASTIC LAMINATE (HPL)	-	DENIM #8822-58	GLOSS (GL)	-	-	CFCI	-	
T-1	DALTILE	FABRIC ART, MODERN TEXTILE	12" X 24"	WHITE	-	MAPEI, ULTRACOLOR PLUS FA	5103 COBBLESTONE	CFCI	3	
T-2	WOW USA	BOHO COLLECTION, PATTERN: TEAR	4" X 10"	MIX #118704 (W26)	MATT	MAPEI, ULTRACOLOR PLUS FA	5103 COBBLESTONE	CFCI	2	
T-3	WOW USA	BOHO COLLECTION, PATTERN: TEAR	4" X 10"	WHITE	MATT	MAPEI, ULTRACOLOR PLUS FA	5103 COBBLESTONE	CFCI	2	
WP-1	INPRO	PALLADIUM RIGID SHEET	48" X 96" SHEET, 0.040" THICK	LEGACY #2401	-	-	-	CFCI	-	
WALL BASE										
AB-1	SCHLUTER SYSTEMS	DILEX-AHKA METAL COVE BASE	VERIFY WITH TILE THICKNESS	CLEAR ANODIZED	-	-	-	CFCI	-	
RB-1	TARKETT	BASEWORKS RUBBER WALL BASE	4"H	55 SILVER GREY	-	-	-	CFCI	-	
FLOOR										
CON-1	SHERWIN WILLIAMS	SEE SPECIFICATIONS	-	CLEAR	SEE SPECIFICATIONS	-	-	CFCI	-	
CPT-1	MANNINGTON	FRIXTION, PATTERN: CHARGE	18" X 36"	KINETIC #11360	-	-	-	CFCI	4	
CPT-2	SHAW FLOORS	RENEWED ENERGY II WITH VICTORIOUS PLUS FOAM CUSHION	6" ROLL	CITYSCAPE	-	-	-	CFCI	6	
CPT-3	J&J FLOORING GROUP	KINETEX; ANALOG #1821	24" X 24"	RELATE #1544	-	-	-	CFCI	5	
LVT-1	ALLIED TILE	PARAMOUNT WOODGRAINS	7.2" X 48", 2.5MM THICK	SALEM #AW34	-	-	-	CFCI	8	
LVT-2	AVA FLOORING	2 SPRK LVT, 22 MIL	18" X 18", 2.5MM THICK	STEAMED CRABS #2SP016	-	-	-	CFCI	9	
LVT-3	AVA FLOORING	2 SPRK LVT, 22 MIL	18" X 18", 2.5MM THICK	ORIOLE #2SP052	-	-	-	CFCI	9	
LVT-4	AVA FLOORING	2 SPRK LVT, 22 MIL	18" X 18", 2.5MM THICK	BLACK-EYED SUSAN #2SP010	-	-	-	CFCI	9	
LVT-5	AVA FLOORING	2 SPRK LVT, 22 MIL	18" X 18", 2.5MM THICK	LAND-HO #2SP024	-	-	-	CFCI	9	
LVT-6	AVA FLOORING	2 SPRK LVT, 22 MIL	18" X 18", 2.5MM THICK	METRO RETRO #2SP027	-	-	-	CFCI	9	
LVT-7	AVA FLOORING	2 SPRK LVT, 22 MIL	18" X 18", 2.5MM THICK	DRESS BLUES #2SP029	-	-	-	CFCI	9	
RF-1	STONHARD	STONETEC UTF DECORATIVE FLAKE EPOXY FLOORING	3/16" THICK	#TEC4-130B	-	-	-	CFCI	-	
SPT-1	ROBBINS SPORTS SURFACES	PULASTIC, CLASSIC 90	23/64" THICK	STANDARD COLOR: STONE GREY #504	-	-	-	CFCI	-	
SPT-2	ROBBINS SPORTS SURFACES	PULASTIC, CLASSIC 90	23/64" THICK	DESIGNER COLOR: EXOTIC RED #122	-	-	-	CFCI	-	
SPT-3	ROBBINS SPORTS SURFACES	PULASTIC, CLASSIC 90	23/64" THICK	DESIGNER COLOR: AUTUMN LEAVES #124	-	-	-	CFCI	13	
SPT-4	ROBBINS SPORTS SURFACES	PULASTIC, CLASSIC 90	23/64" THICK	DESIGNER COLOR: GOLD #200	-	-	-	CFCI	13	
SPT-5	ROBBINS SPORTS SURFACES	PULASTIC, CLASSIC 90	23/64" THICK	STANDARD COLOR: LIME GREEN #401	-	-	-	CFCI	-	
SPT-6	ROBBINS SPORTS SURFACES	PULASTIC, CLASSIC 90	23/64" THICK	STANDARD COLOR: PASTEL BLUE #307	-	-	-	CFCI	-	
SPT-7	ROBBINS SPORTS SURFACES	PULASTIC, CLASSIC 90	23/64" THICK	STANDARD COLOR: CAPRI BLUE #309	-	-	-	CFCI	-	

FINISH PRODUCT REPRESENTATIVE CONTACT LIST			
MANUFACTURER	ACCOUNT REPRESENTATIVE		
	NAME	PHONE NUMBER	EMAIL
AVA FLOR	LAURIE LANGE	847-814-9806	LLANGE@SPARTANSURFACES.COM
BUZZI SPACE	KEVIN SHERIDAN	773-550-9697	KEVIN@SPERIDANCONTRACT.COM
DAL TILE	TABATHA CURRY	314-687-3960	TABATHA.CURRY@DAL TILE.COM
FORBO	JACKIE WILSON	317-629-2061	JACKIE.WILSON@FORBO.COM
FORMICA	MARY COTEY	224-422-4523	MARYCOTEY@METROHARDWOODS.COM
INPRO	MARY KATE SAUER	773-951-7232	MSAUER@INPROCORP.CPM
J&J FLOORING GROUP	HEIDI FENOGLIA	309-264-4879	HEIDI.FENOGLIA@JJFLOORINGGROUP.COM
MANNINGTON	KRISTEN KOMIS	314-250-3040	KRISTEN_KOMIS@MANNINGTON.COM
MAPEI	ANIA JABLONSKA	847-626-8788	AJABLONSKA@MAPEI.COM
MARLITE	KAREN KANE	330-260-7617	KKANE@MARLITE.COM
NEVAMAR	ANDREW MATTHEWS	214-213-2400	ANDREW.MATTHEWS@NEVAMAR.COM
ROBBINS SPORTS SURFACES	RYAN BELLSMITH	314-432-2260	RYANB@MOFLOOR.COM
SHAW FLOORS	SCOTT SCHULTZ	563-201-4686	SCOTT.SCHULTZ@SHAWFLOORS.COM
SHERWIN WILLIAMS	HANK MEINKING	314-281-7485	HANK.MEINKING@SHERWIN.COM
STONHARD	ROBERT LENTZ	574-229-4388	RLENTZ@STONHARD.COM
TARKETT	BRIAN AYRES	314-324-0086	BRIAN.AYRES@TARKETT.COM
VIRGINIA TILE	DARLENE COZZI	847-561-9582	DARLENE.COZZI@VIRGINIATILE.COM
WILSONART	GABBY HOLLIS	331-316-4998	GABRIELLEHOLLIS@AETNAPLYWOOD.COM
WOLF GORDON	DAVID SMITH	314-302-8002	DAVIDSMITH@WOLF-GORDON.COM

FINISH SCHEDULE NOTES	
#	NOTE
1	SEE PLUMBING FIXTURE SCHEDULE FOR INTEGRAL SOLID SURFACE LAVATORY MODEL.
2	INSTALLATION METHOD: AS SHOWN IN ELEVATIONS
3	INSTALLATION METHOD: 33% MIN. OFFSET BRICK
4	INSTALLATION METHOD: HORIZONTAL BRICK ASHLAR
5	INSTALLATION MEHTOD: MONOLITHIC
6	INSTALLATION METHOD: STRETCHED-IN BROADLOOM
7	INSTALLATION METHOD: MONOLITHIC, CIRCLE CUT DESIGN AS SHOWN ON FINISH PLAN
8	INSTALLATION MEHTOD: RANDOM OFFSET, WATERJET CUT CURVE AT CLASSROOM ENTRANCES
9	INSTALLATION MEHTOD: MONOLITHIC, WATERJET CUT CURVE AT CLASSROOM ENTRANCES
10	PROVIDE CHILD-SAFE TENSIONER DEVICE AT ALL LOCATIONS
11	CUSHIONS TO BE MADE FROM
12	PROVIDE CHILD-SAFE TENSIONER DEVICE AT ALL LOCATIONS
13	COLOR REQUIRES DOUBLE TOPCOAT APPLICATION.

PROJECT GENERAL FINISH NOTES

- A. DRAWINGS & SPECIFICATIONS ARE COMPLEMENTARY COMPONENTS OF THE CONTRACT DOCUMENTS. REVIEW ALL DRAWINGS AND SPECIFICATIONS FOR THE COMPLETE SCOPE OF WORK. NOTIFY ARCHITECT IMMEDIATELY FOR CLARIFICATION IF INCONSISTENCIES, CONTRADICTIONS OR OMISSIONS ARE DISCOVERED.
- B. DO NOT SCALE DRAWINGS. IF DIMENSIONAL INFORMATION IS REQUIRED AND NOT FOUND, NOTIFY ARCHITECT IMMEDIATELY FOR CLARIFICATION.
- C. UNO ALL DIMENSIONS ARE TO FACE OF FINISHED WALLS OR SURFACES.
- D. ALL CONTRACTORS TO FIELD VERIFY ALL EXISTING CONDITIONS AND DIMENSIONS PRIOR TO WORK.
- E. BASIS-OF-DESIGN PRODUCT: WHERE SPECIFICATIONS OR DRAWINGS NAME A PRODUCT AND MANUFACTURER, PROVIDE THE SPECIFIED PRODUCT / MANUFACTURER OR SUBMIT AN ALTERNATE REQUEST AS OUTLINED IN PROJECT SPECIFICATIONS. ALTERNATE PRODUCTS TO RESEMBLE BASIS-OF-DESIGN PRODUCT IN APPEARANCE, SIZE, PROFILE, DIMENSIONS, COLOR AND OTHER CHARACTERISTICS.
- F. REFER TO INTERIORS GENERAL INFORMATION SHEET 10.1 FOR FINISH SYMBOLS AND ABBREVIATIONS.
- G. REFER TO GENERAL INFORMATION SHEET G0.1 FOR STANDARD MOUNTING HEIGHTS.
- H. NOTES COLUMN ON PRODUCT FINISH SCHEDULE INDICATES GENERAL COMMENTS ONLY. SEE INTERIOR FINISH PLANS AND SPECIFICATIONS FOR LOCATIONS AND DETAILS.
- I. REFER TO FINISH PLANS, ARCHITECTURAL RCP, FINISH SCHEDULE AND DETAILS FOR FINISH INFORMATION AND LOCATION. REFER TO INTERIOR FINISH & ARCHITECTURAL ELEVATIONS FOR ADDITIONAL FINISH INFORMATION OR WHERE MULTIPLE FINISHES ARE INDICATED ON PLAN FOR THE SAME LOCATION.
- J. EXISTING CONDITION INFORMATION SHOWN WITHIN THE PROJECT AREA IS BASED ON FIELD OBSERVATION AND EXISTING DRAWING DOCUMENTATION. ALL EXISTING CONDITION INFORMATION SHOWN OUTSIDE THE PROJECT AREA IS PROVIDED FOR REFERENCE ONLY AND HAS NOT BEEN FIELD VERIFIED. CONTRACTOR IS RESPONSIBLE FOR VERIFYING ALL EXISTING CONDITIONS PRIOR TO BEGINNING ANY NEW WORK AND SHALL BRING ANY DISCREPANCIES TO THE ATTENTION OF THE DESIGN PROFESSIONAL PRIOR TO DEMOLITION AND CONSTRUCTION.
- K. ALL FINISHES OF SAME TYPE SHALL BE ORDERED IN TIMELY MANNER SO AS TO ADHERE TO PROJECT SCHEDULE. ALL FINISHES OF SAME TYPE SHALL BE ORDERED FROM ONLY ONE (1) DYE LOT. A SAMPLE FROM THE SAME DYE LOT TO BE SUBMITTED TO ARCHITECT FOR APPROVAL. WHERE MORE THAN ONE DYE LOT IS REQUIRED, NOTIFY ARCHITECT IMMEDIATELY AND SUBMIT SECOND VERIFICATION SAMPLE FROM OTHER DYE LOT FOR APPROVAL.
- L. UNO PAINT ALL STEEL DOORS, DOOR FRAMES, INTERIOR BORROW LITE FRAMES, LINTELS AND OTHER EXPOSED METAL ITEMS.
- M. UNO DISSIMILAR FLOOR MATERIALS SHALL MEET UNDER CENTER OF DOOR LEAF WHEN IN CLOSED POSITION.
- N. FLOORING CONTRACTOR TO COORDINATE WITH MANUFACTURER'S REPRESENTATIVE LISTED IN THE PRODUCT MANUFACTURERS CONTACT LIST ON SHEET 10.1.
- O. IN LOCATIONS WHERE STATIC DISSIPATIVE TILE/SHEET IS SPECIFIED, PROVIDE GROUNDING AS REQUIRED IN PRODUCT MANUFACTURER'S WRITTEN INSTRUCTIONS. COORDINATE WITH GC AND ELECTRICAL CONTRACTOR.
- P. UNO ALL LIGHT SWITCH AND OUTLET COVER PLATES TO BE WHITE. SEE ELECTRICAL DRAWINGS.
- Q. UNO ALL WALL/CEILING MECHANICAL DIFFUSER/AIR GRILLES AND ELECTRICAL PANELS TO BE PAINTED TO MATCH ADJACENT WALL FINISH. SEE MECHANICAL & ELECTRICAL DRAWINGS.



Farnsworth GROUP

2211 W. BRADLEY AVENUE
CHAMPAIGN, ILLINOIS 61821
(217) 352-7408 / info@f-w.com

www.f-w.com
Engineers | Architects | Surveyors | Scientists

ISSUE		
#	DATE:	DESCRIPTION:
1	04/22/2025	ADD 02
2	05/06/2025	ADD 04

Bid Set
04/03/2025

PROJECT:
Robinson CUSD #2

Washington Elementary
Renovation & Addition

507 W. Condit St. Robinson, IL
62454

DATE: 04/03/2025

DESIGNED: HMM

DRAWN: HMM

REVIEWED: LLN

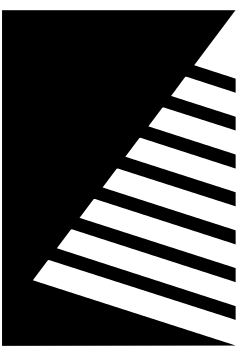
SHEET TITLE:

FINISH SCHEDULES
AND GENERAL
INFORMATION

SHEET NUMBER:

10.1

PROJECT NO.: 02401781.001



Farnsworth GROUP

2211 W. BRADLEY AVENUE
CHAMPAIGN, ILLINOIS 61821
(217) 352-7408 / info@f-w.com

www.f-w.com
Engineers | Architects | Surveyors | Scientists

ISSUE:		
#	DATE:	DESCRIPTION:
1	04/22/2025	ADD 02
2	05/05/2025	ADD 04

OVERALL PRODUCT FINISH SCHEDULE									
TAG	MANUFACTURER	PRODUCT LINE	SIZE	COLOR	FINISH	GROUT		SUPPLIER / INSTALLER	NOTES
						TYPE	COLOR		
CASEWORK HORIZONTAL									
PL-2	WILSONART	HIGH PRESSURE PLASTIC LAMINATE (HPL)	-	PEWTER MESH #4878-38	38 FINE VELVET	-	-	CFCI	-
PL-3	NEVAMAR	HIGH PRESSURE PLASTIC LAMINATE (HPL)	-	BURGUNDY #S-1015	STANDARD ARP (T-)	-	-	CFCI	-
SS-1	WILSONART	SOLID SURFACE	1/2" THICK	METRO CONCRETE	SATIN / MATTE	-	-	CFCI	1
CASEWORK VERTICAL									
PL-1	WILSONART	HIGH PRESSURE PLASTIC LAMINATE (HPL)	-	PHANTUM ECRU #8212-SC-60SC	28 GLOSS LINE	-	-	CFCI	-
DOOR / WINDOW / FRAMES									
D-1	VT INDUSTRIES	HERITAGE COLLECTION	-	WOOD SPECIES: SELECT WHITE MAPLE; STAIN: CLEAR #CL18	FACTORY STANDARD	-	-	CFCI	-
P-10	SHERWIN WILLIAMS	SEE SPECIFICATIONS	-	SW7643 PUSSYWILLOW	-	-	-	CFCI	-
MISCELLANEOUS									
CC-1	INPRO	CUBICLE CURTAIN	-	CELESTIAL FATHOM	-	-	-	CFCI	-
CG-1	INPRO	STAINLESS STEEL CORNER GUARD, SURFACE-MOUNTED	1-1/2" LEGS, 48"H	STAINLESS STEEL, TYPE 304	-	-	-	CFCI	-
CK-1	FORBO	BULLETIN BOARD CORK	-	TBD	-	-	-	CFCI	-
F-1	QA GROUP	CONTRACT-GRADE, UPHOLSTERED CUSHION PAD	3"H, VERIFY SIZE WITH FURNITURE	UPHOLSTERY: WOLF GORDON, PATTERN: DREAMWEAVER, COLOR: POMEGRANATE #DMW7191	-	-	-	CFCI	11
F-2	QA GROUP	CONTRACT-GRADE, UPHOLSTERED CUSHION PAD	3"H, VERIFY SIZE WITH FURNITURE	UPHOLSTERY: WOLF GORDON, PATTERN: DREAMWEAVER, COLOR: CINNAMON #DMW7192	-	-	-	CFCI	11
F-3	QA GROUP	CONTRACT-GRADE, UPHOLSTERED CUSHION PAD	3"H, VERIFY SIZE WITH FURNITURE	UPHOLSTERY: WOLF GORDON, PATTERN: DREAMWEAVER, COLOR: DANDELION #DMW7190	-	-	-	CFCI	11
F-4	QA GROUP	CONTRACT-GRADE, UPHOLSTERED CUSHION PAD	3"H, VERIFY SIZE WITH FURNITURE	UPHOLSTERY: WOLF GORDON, PATTERN: DREAMWEAVER, COLOR: CACTUS #DMW7198	-	-	-	CFCI	11
F-5	QA GROUP	CONTRACT-GRADE, UPHOLSTERED CUSHION PAD	3"H, VERIFY SIZE WITH FURNITURE	UPHOLSTERY: WOLF GORDON, PATTERN: DREAMWEAVER, COLOR: WINDMILL #DMW7196	-	-	-	CFCI	11
F-6	QA GROUP	CONTRACT-GRADE, UPHOLSTERED CUSHION PAD	3"H, VERIFY SIZE WITH FURNITURE	UPHOLSTERY: WOLF GORDON, PATTERN: DREAMWEAVER, COLOR: AEGEAN #DMW7197	-	-	-	CFCI	11
P-10	SHERWIN WILLIAMS	SEE SPECIFICATIONS	-	SW7643 PUSSYWILLOW	-	-	-	CFCI	-
RB-2	TARKETT	RUBBER RISER, #RB-55	2"H ROLL	55 SILVER GREY	-	-	-	CFCI	-
RB-3	TARKETT	RUBBER STAIR NOSING, #RCN-55-B	-	55 SILVER GREY	-	-	-	CFCI	-
TR-1	FLANNERY	PANEL J-MOLD	3/8"	PAINTED TO MATCH P-3	MILL FINISH TO BE PAINTED	-	-	CFCI	-
TR-2	FLANNERY	DRYWALL L-METAL, #DWL200	2"	-	CLEAR ANODIZED ALUMINUM	-	-	CFCI	-
TR-3	INPRO	ALUMINUM OUTSIDE CORNER WALL PROTECTION TRIM	3/8" LEG	-	SATIN ANODIZED ALUMINUM	-	-	CFCI	-
TR-4	INPRO	ALUMINUM CAP WALL PROTECTION TRIM	3/8"	-	SATIN ANODIZED ALUMINUM	-	-	CFCI	-
TS-1	SCHLUTER SYSTEMS	VINPRO-U	-	-	BRUSHED CHROME ALUMINUM	-	-	CFCI	-
TS-2	SCHLUTER SYSTEMS	SCHIENE	VERIFY WITH FLOOR THICKNESSES	-	CLEAR ANODIZED ALUMINUM	-	-	CFCI	-
TS-3	SCHLUTER SYSTEMS	VINPRO-S	VERIFY WITH FLOOR THICKNESSES	-	BRUSHED CHROME ALUMINUM	-	-	CFCI	-
TS-4	SCHLUTER SYSTEMS	QUADEC	VERIFY WITH TILE THICKNESS	-	SATIN ANODIZED ALUMINUM	-	-	CFCI	-
TS-5	SCHLUTER SYSTEMS	ISOLUX	VERIFY WITH TILE THICKNESS	-	SATIN ANODIZED ALUMINUM	-	-	CFCI	-
TS-6	TARKETT	WHEEL TRAFFICE TRANSITIONS, #CTA-XX-L	VERIFY WITH FLOOR THICKNESSES	TBD	-	-	-	CFCI	-
TS-7	TARKETT	WHEEL TRAFFICE TRANSITIONS, #CTA-XX-K	VERIFY WITH FLOOR THICKNESSES	TBD	-	-	-	CFCI	-
WINDOW TREATMENT									
RS-1	DRAPER, INC.	MOTORIZED FLEXSHADE 485 AC	SEE WINDOW ELEVATIONS	SHADE FABRIC: E SCREEN ATF, COLOR: CHARCOAL/GREY-STONE; OPENNESS: 3%;	FASCIA: CLEAR ANODIZED	-	-	CFCI	-
RS-2	DRAPER, INC.	MANUAL FLEXSHADE	SEE WINDOW ELEVATIONS	SHADE FABRIC: E SCREEN ATF, COLOR: CHARCOAL/GREY-STONE; OPENNESS: 3%;	FASCIA: CLEAR ANODIZED	-	-	CFCI	10

FINISH PRODUCT REPRESENTATIVE CONTACT LIST				
MANUFACTURER	ACCOUNT REPRESENTATIVE			
	NAME	PHONE NUMBER	EMAIL	
AVA FLOR	LAURIE LANGE	847-814-9806	LLANGE@SPARTANSURFACES.COM	
BLUZZI SPACE	KEVIN SHERIDAN	773-550-9697	KEVIN@SHERIDANCONTRACT.COM	
DALTILE	TABATHA CURRY	314-687-3960	TABATHA.CURRY@DALTILE.COM	
FORBO	JACKIE WILSON	317-629-2061	JACKIE.WILSON@FORBO.COM	
FORMICA	MARY COTEY	224-422-4523	MARYCOTEY@METROHARDWOODS.COM	
INPRO	MARY KATE SAUER	773-951-7232	MSAUER@INPROCORP.CPM	
J&J FLOORING GROUP	HEIDI FENOGLIA	309-264-4879	HEIDI.FENOGLIA@JFLOORINGGROUP.COM	
MANNINGTON	KRISTEN KOMIS	314-250-3040	KRISTEN_KOMIS@MANNINGTON.COM	
MAPEI	ANIA JABLONSKA	847-626-8788	AJABLONSKA@MAPEI.COM	
MARLITE	KAREN KANE	330-260-7617	KKANE@MARLITE.COM	
NEVAMAR	ANN MARIE MATHEWS	224-213-3760	ANNMARIE_MATHEWS@PANOLAM.COM	
ROBBINS SPORTS SURFACES	RYAN BEILSMITH	314-432-2260	RYANB@MOFLOOR.COM	
SHAW FLOORS	SCOTT SCHULZ	563-320-4480	SCOTT.SCHULZ@SHAWINC.COM	
SHERWIN WILLIAMS	HANK MEINKING	314-281-7485	HANK.MEINKING@SHERWIN.COM	
STONHARD	ROBERT LENTZ	574-229-4388	RLENTZ@STONHARD.COM	
TARKETT	BRIAN AYRES	314-324-0086	BRIAN.AYRES@TARKETT.COM	
VIRGINIA TILE	DARLENE COZZI	847-561-9582	DARLENE.COZZI@VIRGINIATILE.COM	
WILSONART	GABBY HOLLIS	331-316-4998	GABRIELLEHOLLIS@AETNAPLYWOOD.COM	
WOLF GORDON	DAVID SMITH	314-302-8002	DAVIDSMITH@WOLF-GORDON.COM	

FINISH SCHEDULE NOTES	
#	NOTE
1	SEE PLUMBING FIXTURE SCHEDULE FOR INTEGRAL SOLID SURFACE LAVATORY MODEL.
2	INSTALLATION METHOD: AS SHOWN IN ELEVATIONS
3	INSTALLATION METHOD: 33% MIN. OFFSET BRICK
4	INSTALLATION METHOD: HORIZONTAL BRICK ASHLAR
5	INSTALLATION MEHTOD: MONOLITHIC
6	INSTALLATION METHOD: STRETCHED-IN BROADLOOM
7	INSTALLATION METHOD: MONOLITHIC, CIRCLE CUT DESIGN AS SHOWN ON FINISH PLAN
8	INSTALLATION MEHTOD: RANDOM OFFSET, WATERJET CUT CURVE AT CLASSROOM ENTRANCES
9	INSTALLATION MEHTOD: MONOLITHIC, WATERJET CUT CURVE AT CLASSROOM ENTRANCES
10	PROVIDE CHILD-SAFE TENSIONER DEVICE AT ALL LOCATIONS
11	CUSHIONS TO BE MADE FROM
12	PROVIDE Z-CLIP HARDWARE FOR MOUNTING. SEE DETAILS FOR TRIM AT EXPOSED EDGES.
13	COLOR REQUIRES DOUBLE TOPCOAT APPLICATION.

Bid Set
04/03/2025

PROJECT:
Robinson CUSD #2

Washington Elementary
Renovation & Addition

507 W. Condit St. Robinson, IL
62454

DATE: 04/03/2025

DESIGNED: HMM

DRAWN: HMM

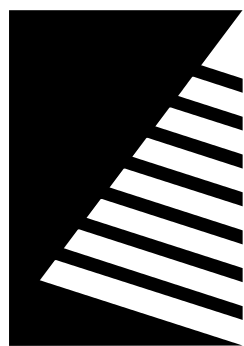
REVIEWED: LLN

FINISH SCHEDULES

SHEET NUMBER:

10.2

PROJECT NO.: 02401781.001



Farnsworth GROUP

2211 W. BRADLEY AVENUE
CHAMPAIGN, ILLINOIS 61821
(217) 352-7408 / info@f-w.com

www.f-w.com
Engineers | Architects | Surveyors | Scientists

ISSUE:	#	DATE:	DESCRIPTION:
	1	05/05/2025	ADD 04

FINISH PLAN GENERAL NOTES

- A. UNO ALL PARTITIONS TO RECEIVE PAINT, P-1.
- B. AT ALL LOCATIONS WHERE ACCENT IS DENOTED IN FINISH PLAN, CONTRACTOR SHALL PROVIDE ADDITIONAL PAINT COLOR. COLOR SHALL BE DETERMINED AT A LATER DATE & PROVIDED BY ARCHITECT.
- C. UNO ALL WALL BASE SHALL BE RESILIENT BASE, RB-1. ACCENT WALL COLORS TO RECEIVE THE COORESPONDING COLOR MATCHING WALL BASE.
- D. ALL FLOOR TRANSITIONS THAT CHANGE MATERIALS AND/OR CHANGE THICKNESS TO RECEIVE TRANSITION STRIP TO BE APPROVED BY ARCHITECT. SEE SHEET I3.1 FOR DETAILS.
- E. UNO ALL FIBER-REINFORCED PANELING, FRP-1 SHALL BE 4'-0"W x 4'-0"H AT MOP SINKS.
- F. UNO ALL METAL DOORS TO RECEIVE PAINT, P-10, REFER TO DOOR SCHEDULE FOR ADDITIONAL INFORMATION.
- G. UNO ALL HOLLOW METAL FRAMES TO RECEIVE PAINT, P-10, REFER TO DOOR SCHEDULE FOR ADDITIONAL INFORMATION.
- H. UNO ALL WOOD DOORS TO BE, D-1, REFER TO DOOR SCHEDULE FOR ADDITIONAL INFORMATION.
- I. UNO ALL EXTERIOR WINDOW GLAZING TO RECEIVE NEW SOLID SURFACE WINDOW SILLS, SS-1.
- J. UNO ALL EXTERIOR WINDOW AND STOREFRONT GLAZING TO RECEIVE WINDOW ROLLER SHADES, RS-2. REFER TO DETAILS.
- K. UNO ALL EXPOSED STRUCTURE, DUCT WORK, PIPING & CONDUITS TO RECEIVE PAINT COLOR ACCENT TO MATCH COORESPONDING ACCENT WALL AND FLOOR COLOR.
- L. UNO ALL HANDRAILS TO BE PAINTED, P-10.
- M. FURNITURE IS SHOWN FOR REFERENCE ONLY AND IS INCLUDED IN A SEPARATE CONTRACT.

FINISH KEYNOTES

- 1 PAINT COLOR TO MATCH ADJACENT CLASSROOM PAINT ACCENT COLOR. SEE FINISH PLANS.
- 2 ALIGN PAINT TRANSITION TO EDGE OF SOFFIT OVERHEAD.
- 3 PROVIDE METAL EDGE TRIM TO EXPOSED TILE EDGES AND AT WAINSCOT TOP.
- 4 PROVIDE METAL EDGE TRIM TO TOP OF FRP PANELING.
- 5 ACCENT COLOR IS DEPENDANT ON ROOM. SEE FINISH PLANS.
- 6 FABRIC COLOR IS DEPENDANT ON ROOM. SEE FINISH PLANS.
- 7 PAINTED WALL DESIGN USING P-3, P-4, P-5, P-6, P-7, AND P-8. SEE DETAIL #4/A8.11 FOR DESIGN.
- 8 PAINTED WALL DESIGN USING P-3, P-4, P-5, P-6, P-7, AND P-8. SEE DETAIL #6/A8.10 FOR DESIGN.
- 9 PAINTED WALL DESIGN USING P-3, P-4, P-5, P-6, P-7, AND P-8. SEE DETAIL #5/A8.10 FOR DESIGN.
- 10 COLUMN TO BE PAINTED, P-10
- 11 DESIGN TO ALIGN FROM FLOOR TO WALL. SEE INTERIOR FINISH PLANS.
- 12 RADIUS DETERMINED FROM FLOOR DESIGN. SEE INTERIOR FINISH PLANS.
- 13 PROTECT EXISTING WALL TILE AND CMU FINISH THROUGHOUT DURATION OF CONSTRUCTION.

Bid Set
04/03/2025

PROJECT:
Robinson CUSD #2

Washington Elementary Renovation & Addition

507 W. Condit St. Robinson, IL
62454

DATE: 04/03/2025

DESIGNED: HMM

DRAWN: HMM

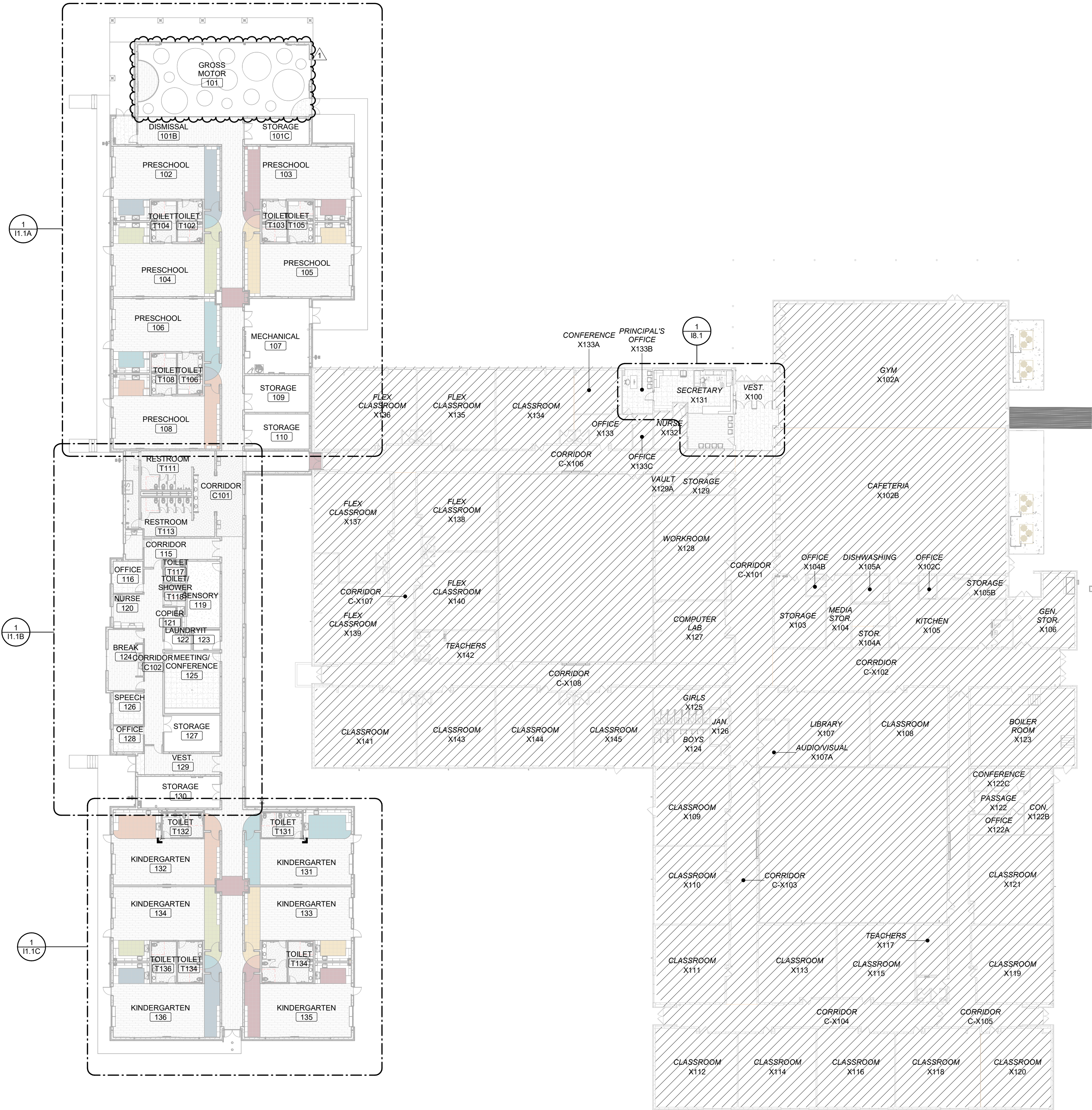
REVIEWED: LLN

FIRST FLOOR FINISH PLAN

SHEET NUMBER:

I1.1

PROJECT NO.: 02401781.001

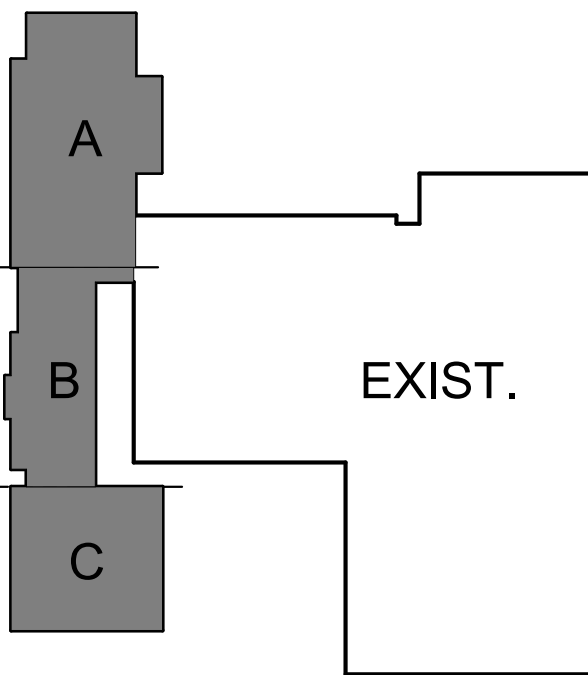


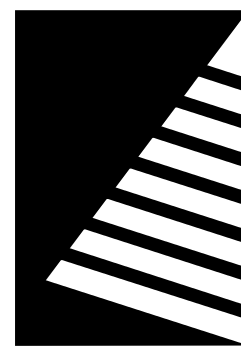
1 FIRST FLOOR FINISH PLAN

SCALE: 3/64" = 1'-0"

KEY PLAN

SCALE: NO SCALE





Farnsworth GROUP

2211 W. BRADLEY AVENUE
CHAMPAIGN, ILLINOIS 61821
(217) 352-7408 / info@f-w.com

www.f-w.com
Engineers | Architects | Surveyors | Scientists

ISSUE		
#	DATE:	DESCRIPTION:
1	04/22/2025	ADD 02
2	05/05/2025	ADD 04

FINISH PLAN GENERAL NOTES

- A. UNO ALL PARTITIONS TO RECEIVE PAINT, P-1.
- B. AT ALL LOCATIONS WHERE ACCENT IS DENOTED IN FINISH PLAN, CONTRACTOR SHALL PROVIDE ADDITIONAL PAINT COLOR. COLOR SHALL BE DETERMINED AT A LATER DATE & PROVIDED BY ARCHITECT.
- C. UNO ALL WALL BASE SHALL BE RESILIENT BASE, RB-1. ACCENT WALL COLORS TO RECEIVE THE COORESPONDING COLOR MATCHING WALL BASE.
- D. ALL FLOOR TRANSITIONS THAT CHANGE MATERIALS AND/OR CHANGE THICKNESS TO RECEIVE TRANSITION STRIP TO BE APPROVED BY ARCHITECT. SEE SHEET I3.1 FOR DETAILS.
- E. UNO ALL FIBER-REINFORCED PANELING, FRP-1 SHALL BE 4'-0"W x 4'-0"H AT MOP SINKS.
- F. UNO ALL METAL DOORS TO RECEIVE PAINT, P-10, REFER TO DOOR SCHEDULE FOR ADDITIONAL INFORMATION.
- G. UNO ALL HOLLOW METAL FRAMES TO RECEIVE PAINT, P-10, REFER TO DOOR SCHEDULE FOR ADDITIONAL INFORMATION.
- H. UNO ALL WOOD DOORS TO BE, D-1, REFER TO DOOR SCHEDULE FOR ADDITIONAL INFORMATION.
- I. UNO ALL EXTERIOR WINDOW GLAZING TO RECEIVE NEW SOLID SURFACE WINDOW SILLS, SS-1.
- J. UNO ALL EXTERIOR WINDOW AND STOREFRONT GLAZING TO RECEIVE WINDOW ROLLER SHADES, RS-2. REFER TO DETAILS.
- K. UNO ALL EXPOSED STRUCTURE, DUCT WORK, PIPING & CONDUITS TO RECEIVE PAINT COLOR ACCENT TO MATCH COORESPONDING ACCENT WALL AND FLOOR COLOR.
- L. UNO ALL HANDRAILS TO BE PAINTED, P-10.
- M. FURNITURE IS SHOWN FOR REFERENCE ONLY AND IS INCLUDED IN A SEPARATE CONTRACT.

FINISH KEYNOTES

- 1 PAINT COLOR TO MATCH ADJACENT CLASSROOM PAINT ACCENT COLOR. SEE FINISH PLANS.
- 2 ALIGN PAINT TRANSITION TO EDGE OF SOFFIT OVERHEAD.
- 3 PROVIDE METAL EDGE TRIM TO EXPOSED TILE EDGES AND AT WAINSCOT TOP.
- 4 PROVIDE METAL EDGE TRIM TO TOP OF FRP PANELING.
- 5 ACCENT COLOR IS DEPENDANT ON ROOM. SEE FINISH PLANS.
- 6 FABRIC COLOR IS DEPENDANT ON ROOM. SEE FINISH PLANS.
- 7 PAINTED WALL DESIGN USING P-3, P-4, P-5, P-6, P-7, AND P-8. SEE DETAIL #4/A8.11 FOR DESIGN.
- 8 PAINTED WALL DESIGN USING P-3, P-4, P-5, P-6, P-7, AND P-8. SEE DETAIL #6/A8.10 FOR DESIGN.
- 9 PAINTED WALL DESIGN USING P-3, P-4, P-5, P-6, P-7, AND P-8. SEE DETAIL #5/A8.10 FOR DESIGN.
- 10 COLUMN TO BE PAINTED, P-10
- 11 DESIGN TO ALIGN FROM FLOOR TO WALL. SEE INTERIOR FINISH PLANS.
- 12 RADIUS DETERMINED FROM FLOOR DESIGN. SEE INTERIOR FINISH PLANS.
- 13 PROTECT EXISTING WALL TILE AND CMU FINISH THROUGHOUT DURATION OF CONSTRUCTION.

Bid Set
04/03/2025

PROJECT:
Robinson CUSD #2

Washington Elementary Renovation & Addition

507 W. Condit St. Robinson, IL
62454

DATE: 04/03/2025

DESIGNED: HMM

DRAWN: HMM

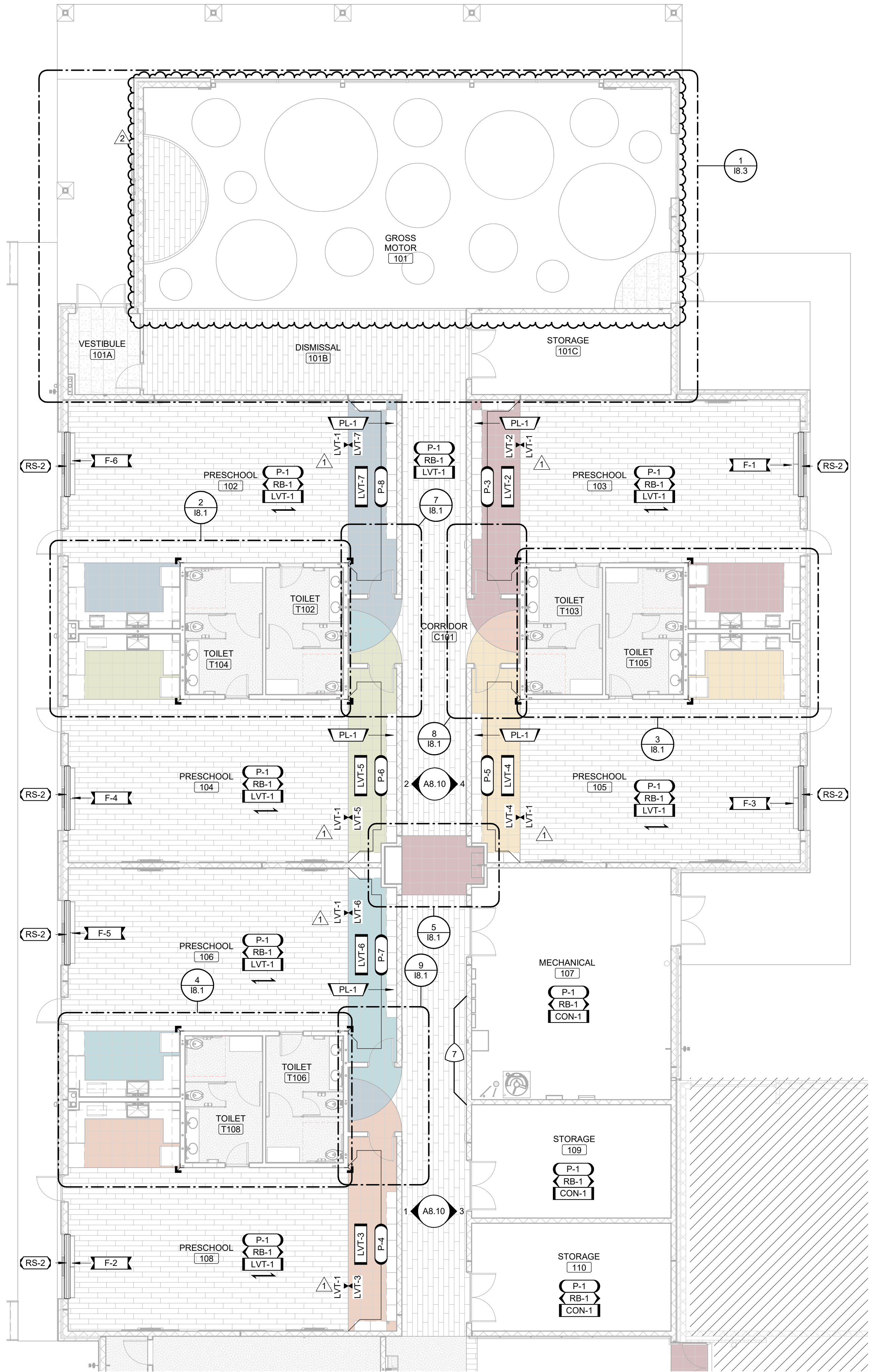
REVIEWED: LLN

ENLARGED FINISH PLAN - AREA A

SHEET NUMBER

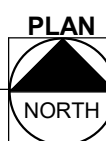
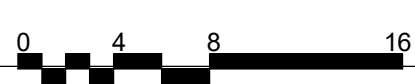
11.1A

PROJECT NO.: 02401781.001



1 ENLARGED FINISH PLAN - AREA A

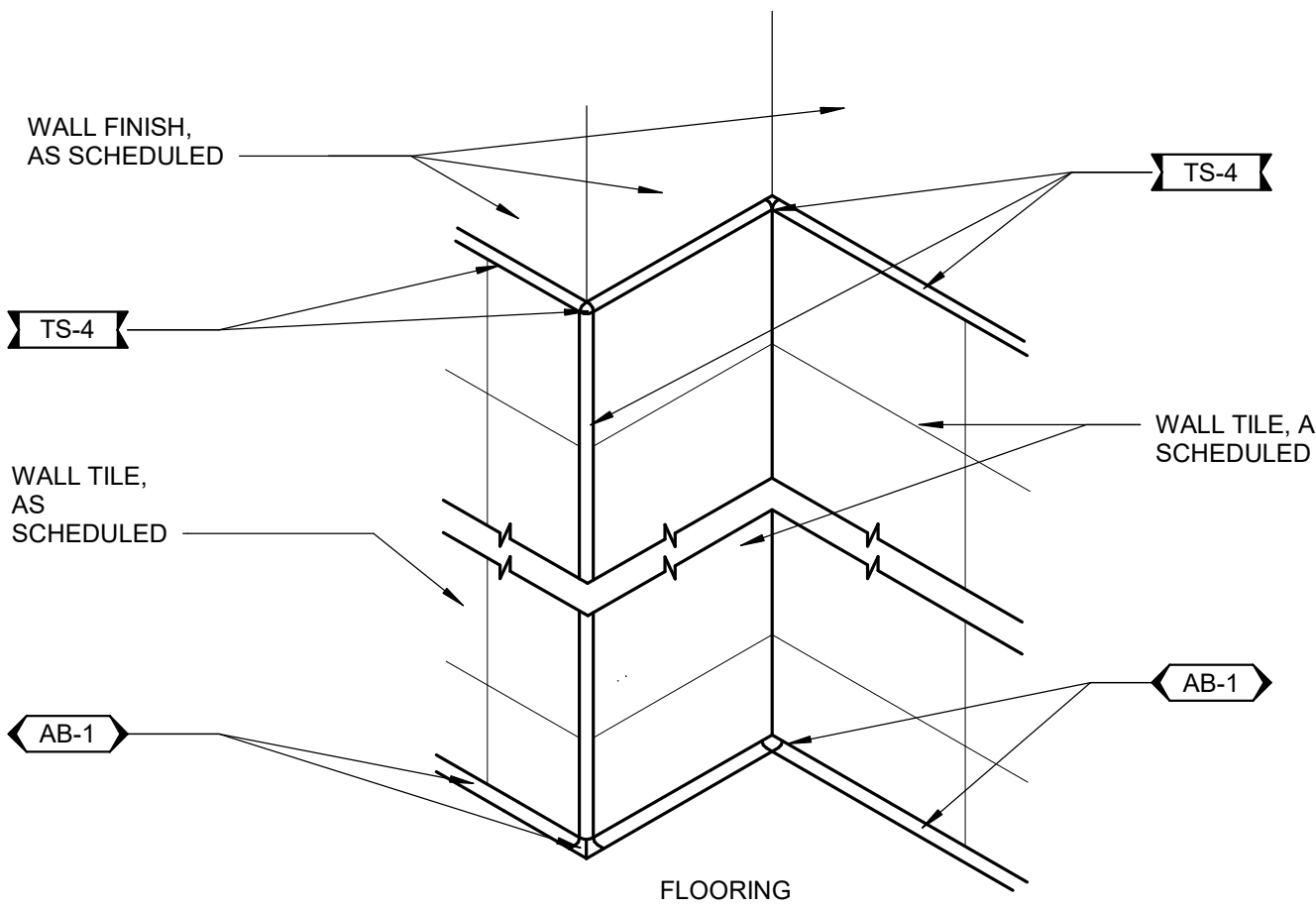
SCALE: 1/8" = 1'-0"



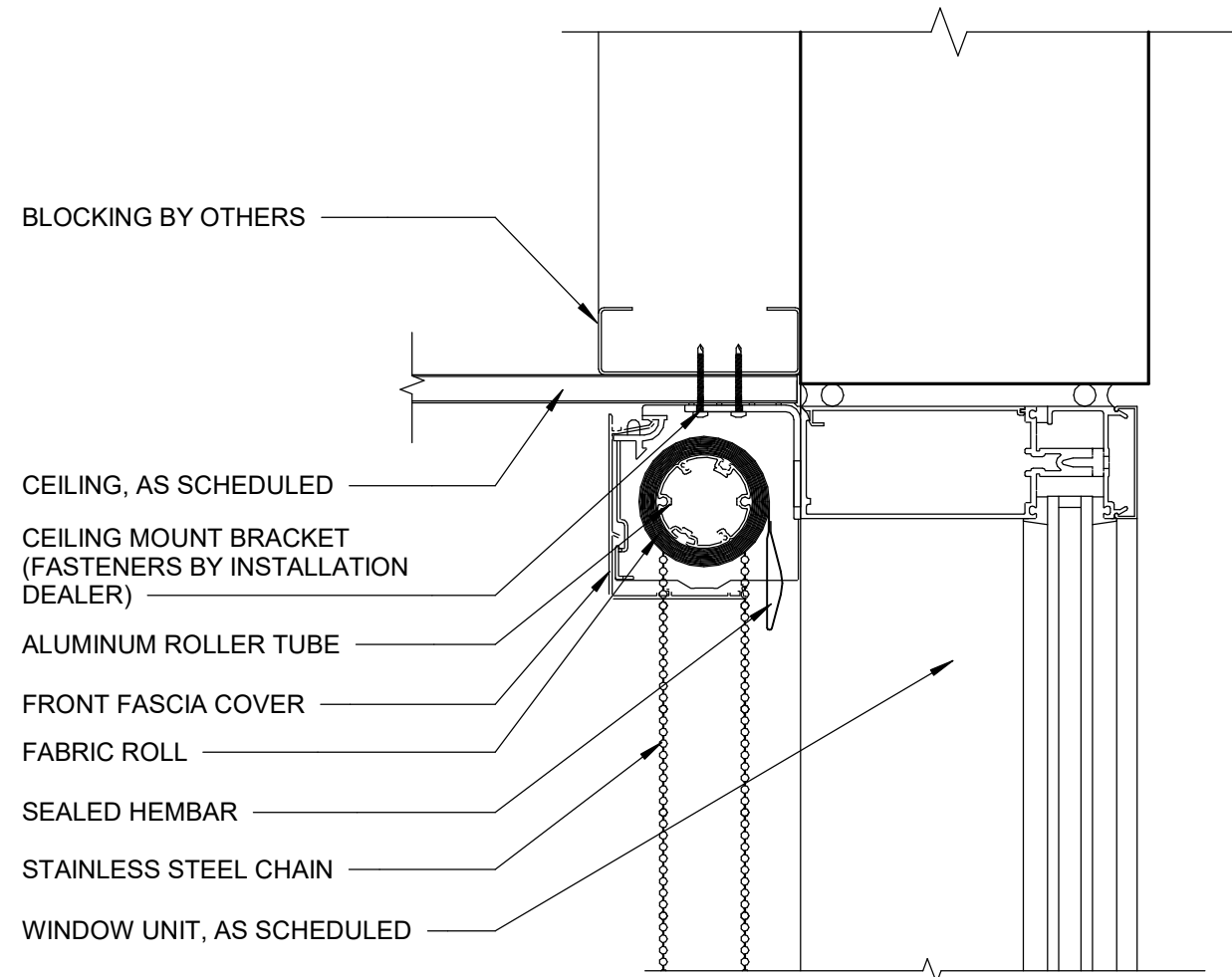
KEY PLAN

SCALE: NO SCALE

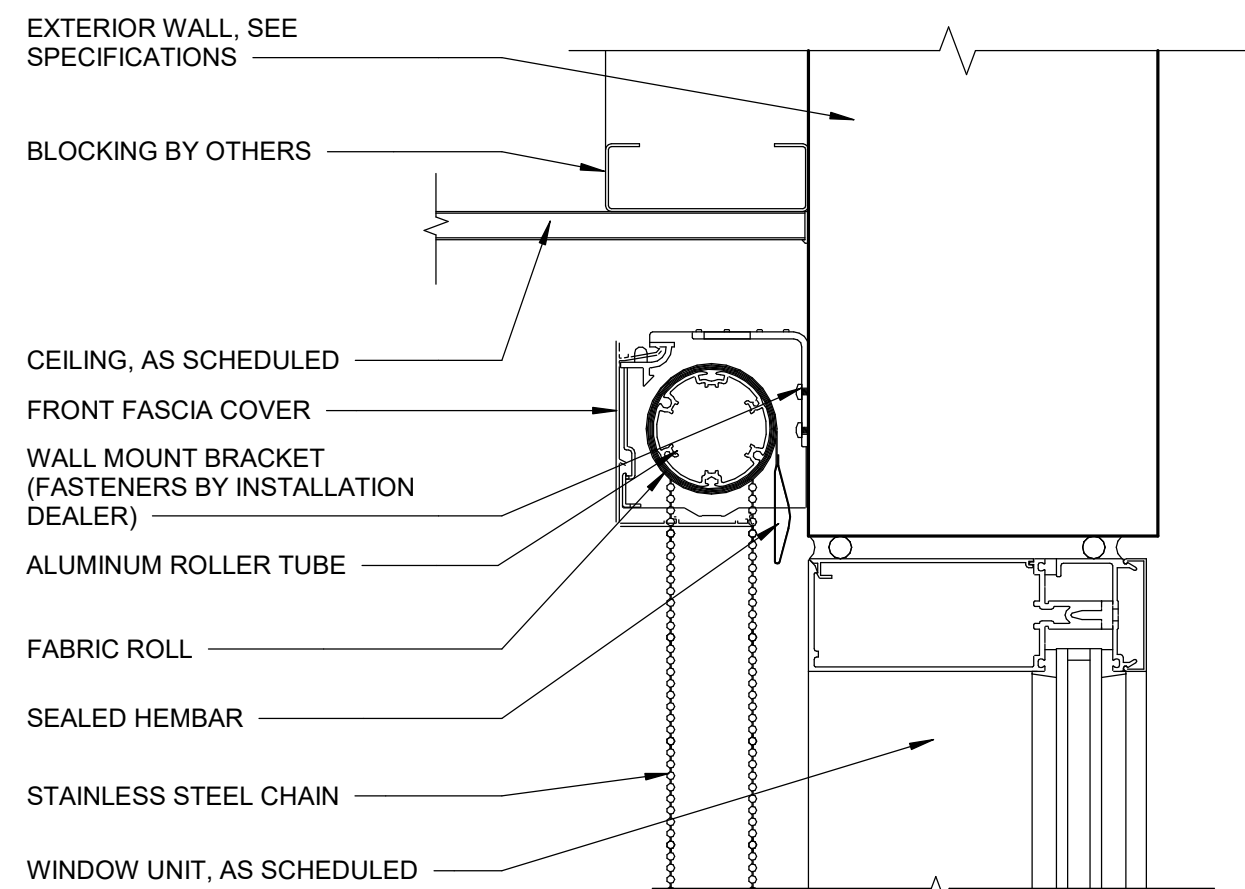




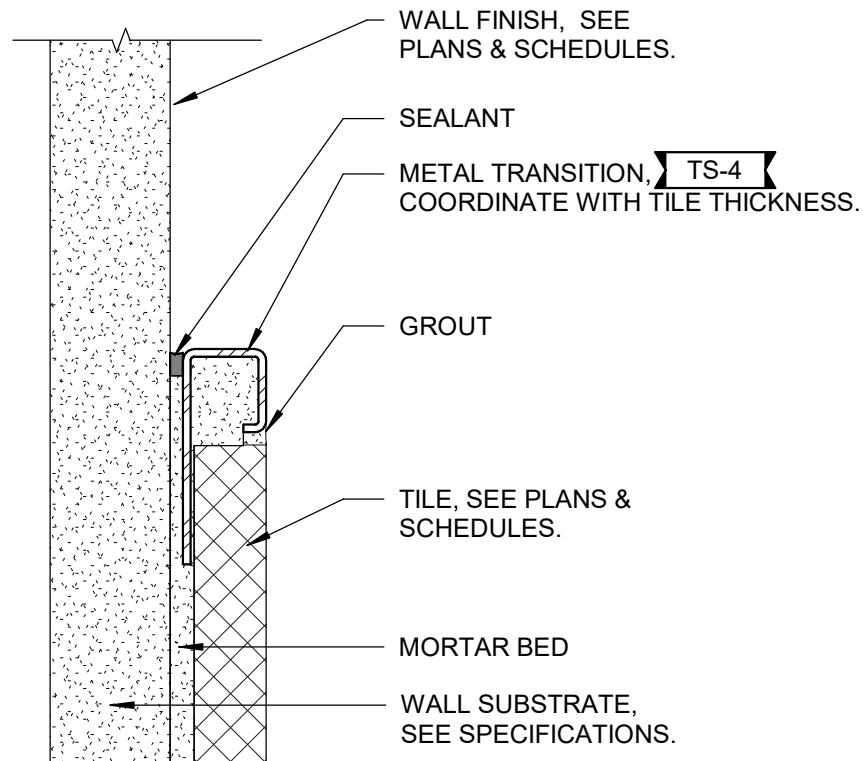
16 **TILE WAINSCOT WITH ALUMINUM COVE BASE**
SCALE: 1 1/2" = 1'-0"



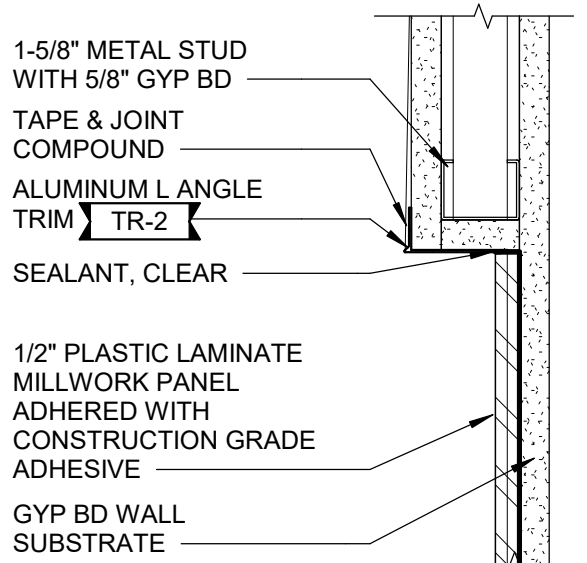
15 **ROLLER SHADE - SINGLE - CEILING MOUNT**
SCALE: 3" = 1'-0"



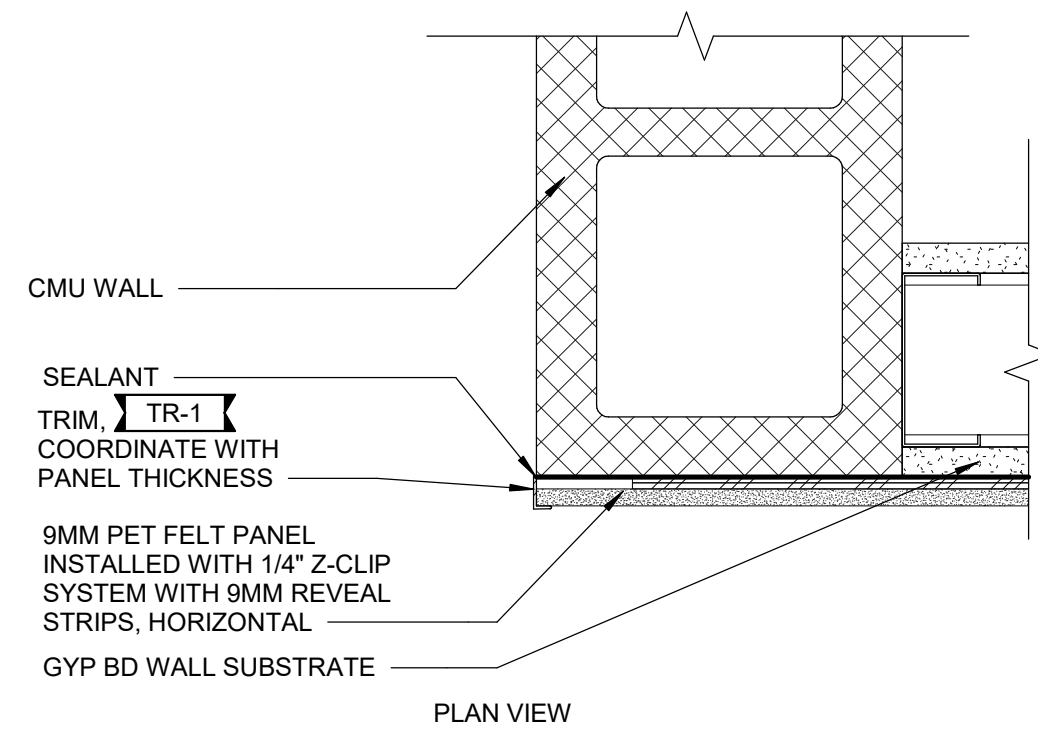
14 **ROLLER SHADE - SINGLE - WALL MOUNT**
SCALE: 3" = 1'-0"



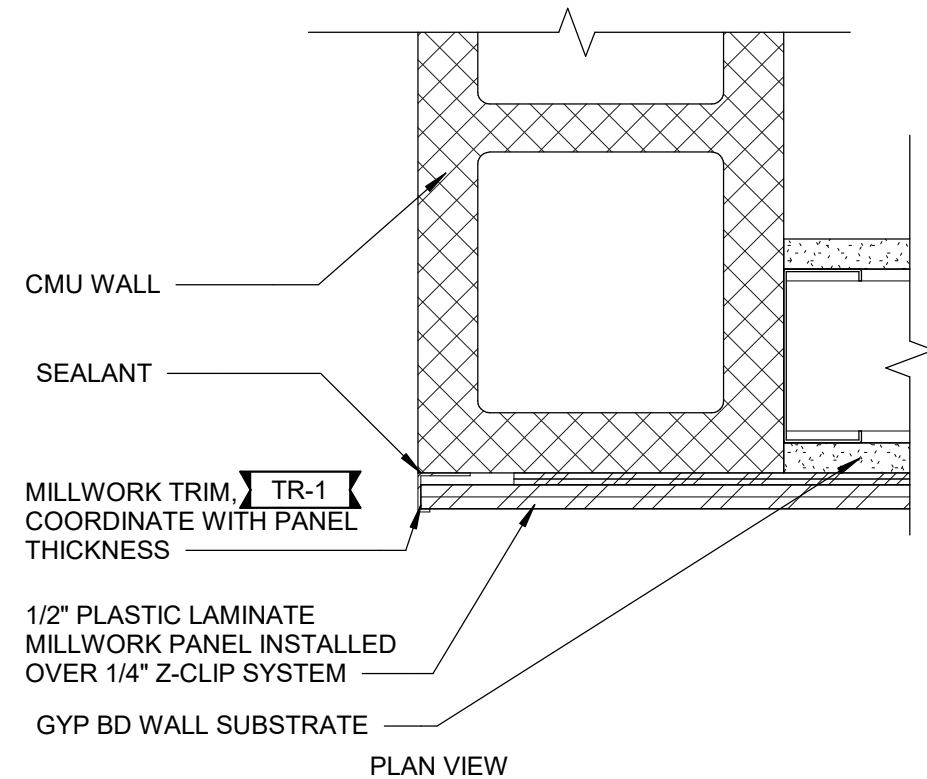
13 **TILE EDGE TRANSITION_QUADEC WAINSCOT CAP**
SCALE: 12" = 1'-0"



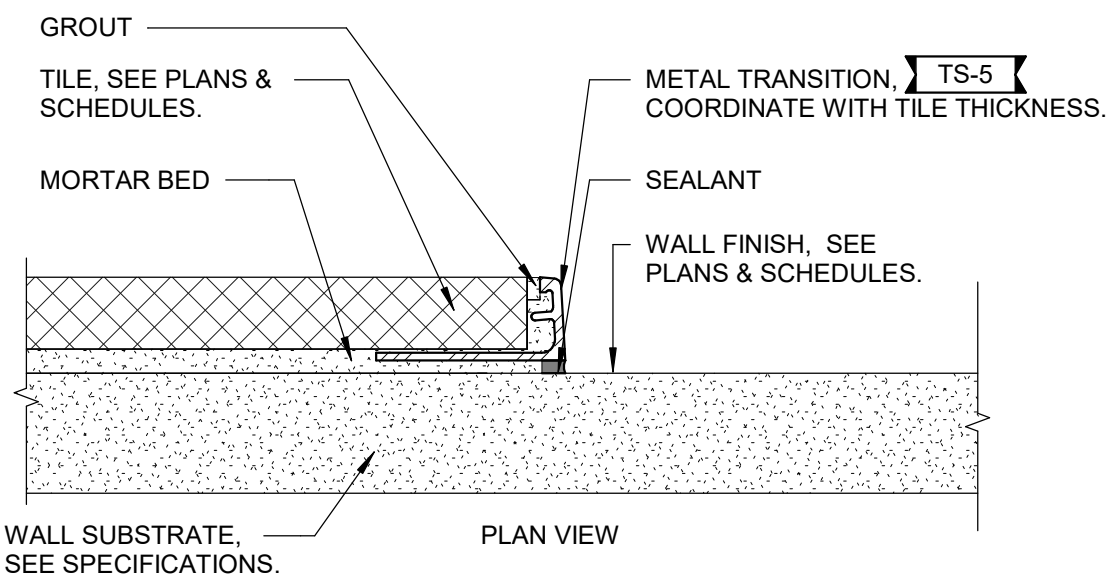
12 **MILLWORK PANEL TRANSITION**
SCALE: 3" = 1'-0"



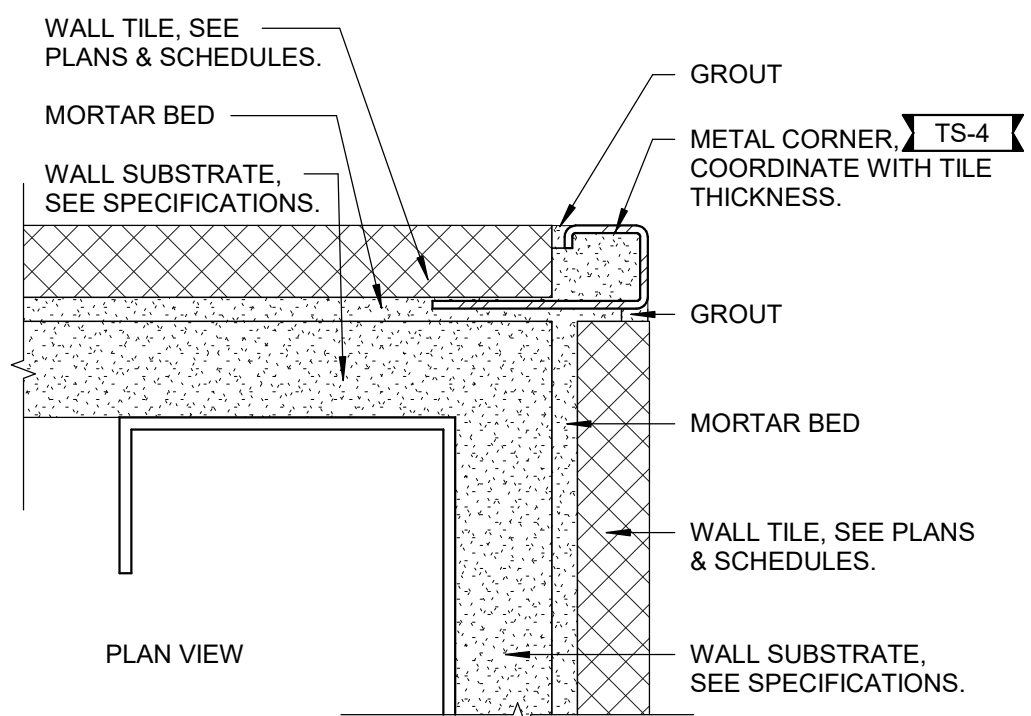
11 **ACOUSTIC PANEL CORNER**
SCALE: 3" = 1'-0"



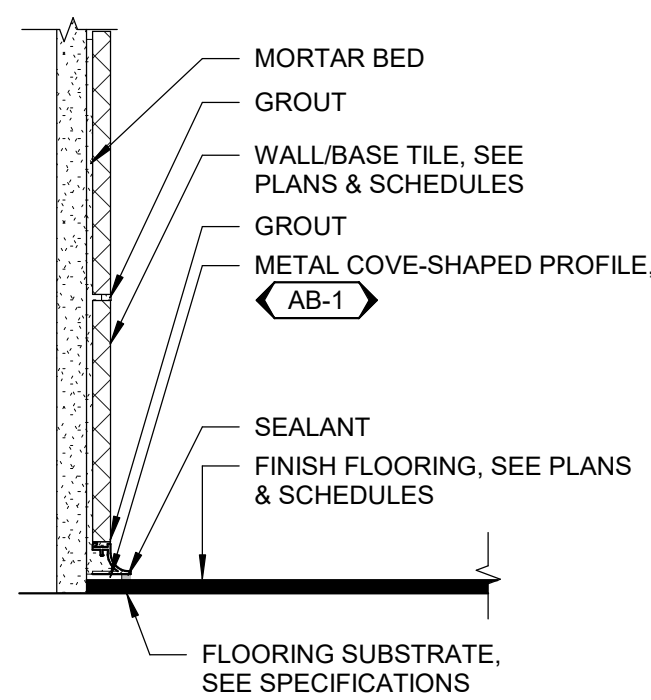
10 **MILLWORK PANEL CORNER**
SCALE: 3" = 1'-0"



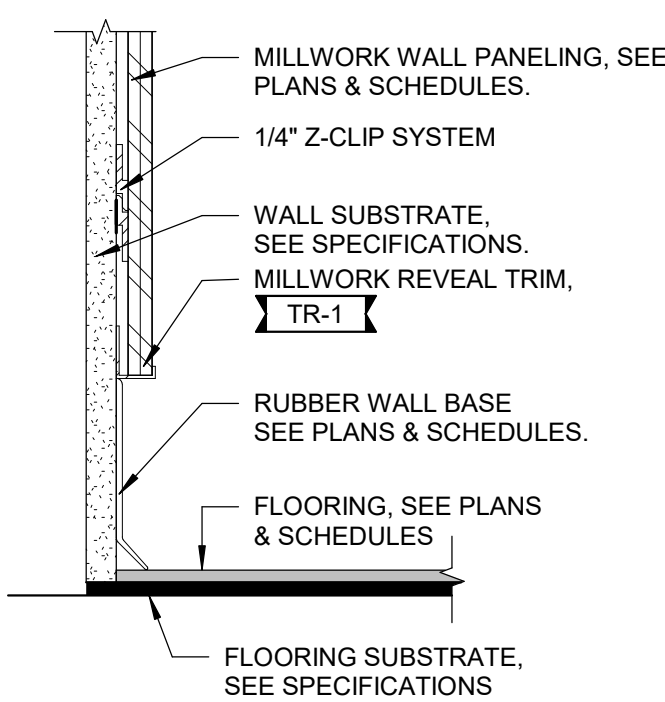
9 **TILE EDGE TRANSITION_WALL**
SCALE: 12" = 1'-0"



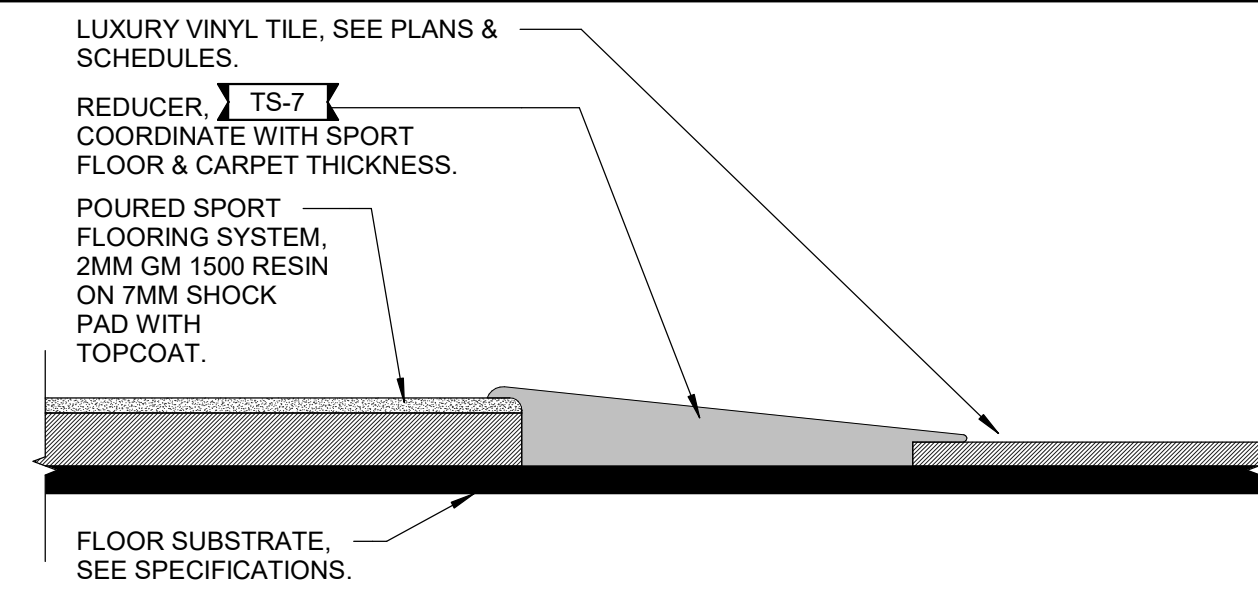
8 **OUTSIDE CORNER - QUADEC_2 SIDES**
SCALE: 12" = 1'-0"



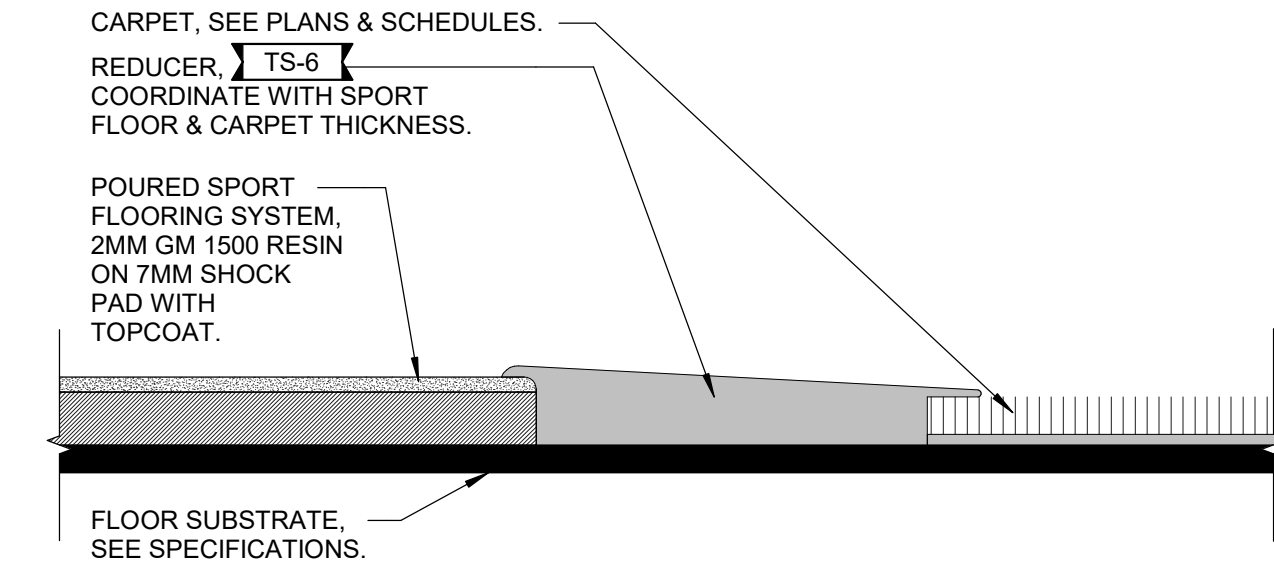
7 **STRAIGHT TILE BASE & DILEX COVE - WALL TILE**
SCALE: 3" = 1'-0"



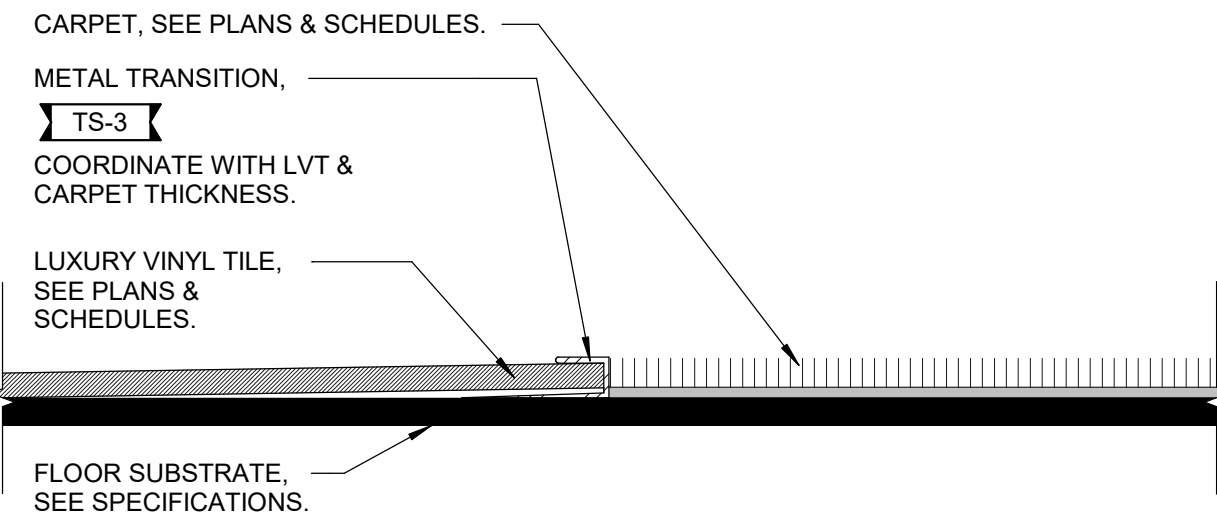
6 **RUBBER BASE - WALL PANELING**
SCALE: 3" = 1'-0"



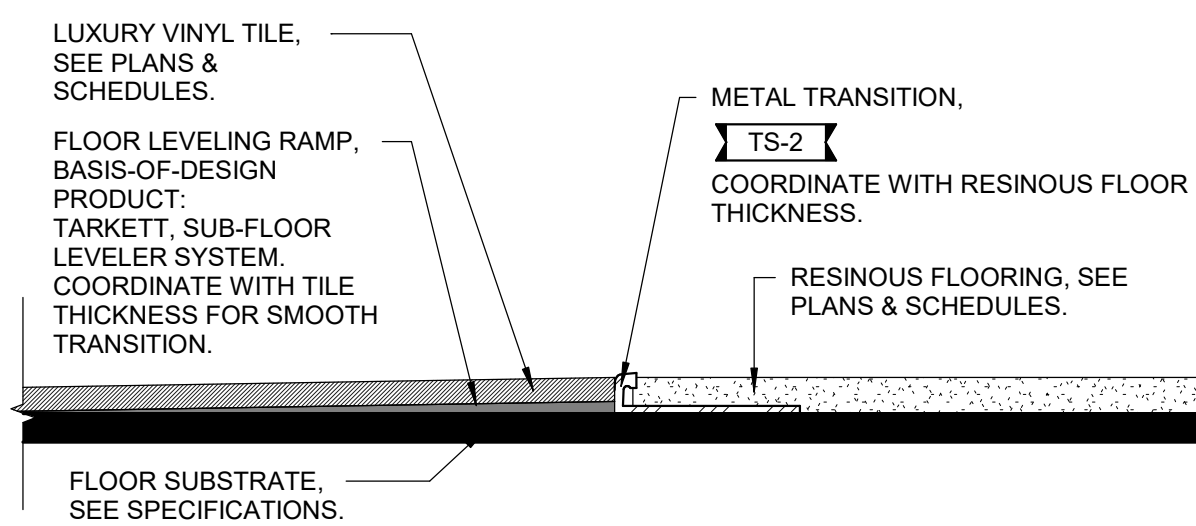
5 **POURED SPORT FLOOR TO LVT TRANSITION**
SCALE: 12" = 1'-0"



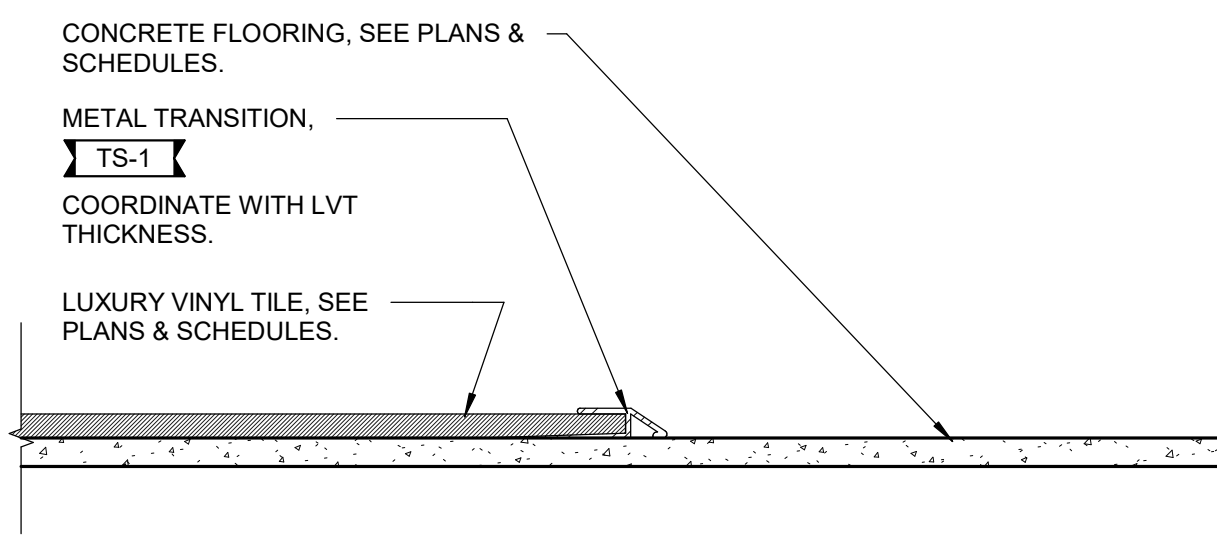
4 **POURED SPORT FLOOR TO CARPET TRANSITION**
SCALE: 12" = 1'-0"



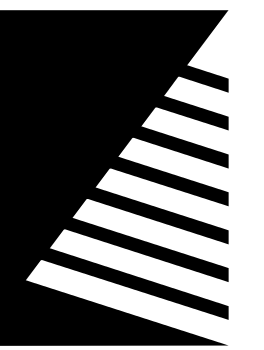
3 **CARPET TO LVT TRANSITION**
SCALE: 12" = 1'-0"



2 **LVT TO RESINOUS FLOOR TRANSITION**
SCALE: 12" = 1'-0"



1 **LVT TO CONCRETE TRANSITION**
SCALE: 12" = 1'-0"



Farnsworth
GROUP

2211 W. BRADLEY AVENUE
CHAMPAIGN, ILLINOIS 61821
(217) 352-7408 / info@f-w.com

www.f-w.com
Engineers | Architects | Surveyors | Scientists
ISSUE:
DATE: DESCRIPTION:
1 05/05/2025 ADD 04

Bid Set
04/03/2025

PROJECT:
Robinson CUSD #2

Washington
Elementary
Renovation & Addition

507 W. Condit St. Robinson, IL
62454

DATE: 04/03/2025

DESIGNED: HMM

DRAWN: HMM

REVIEWED: LLN

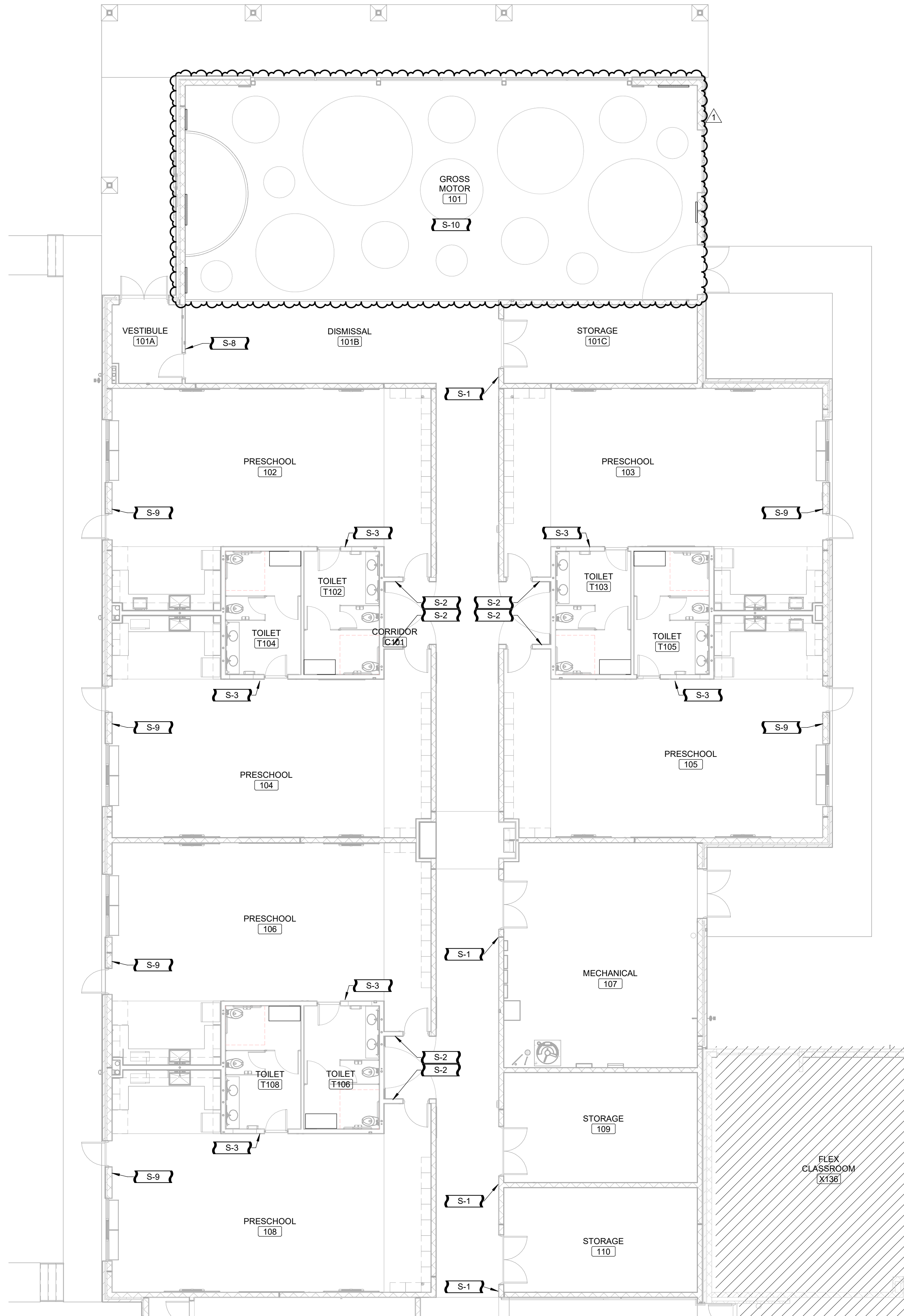
SHEET TITLE:

INTERIOR FINISH
DETAILS

SHEET NUMBER:

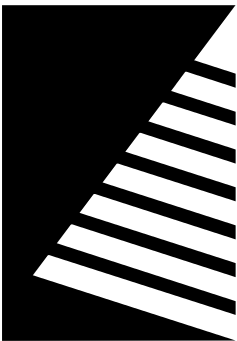
13.1

PROJECT NO.: 02401781.001



SIGNAGE / ARTWORK PLAN GENERAL NOTES

- A. ALL SIGNAGE SHALL BE CONTRACTOR FURNISHED AND INSTALLED.
- B. ALL SIGNAGE MUST CONFORM TO AMERICANS WITH DISABILITIES ACT (ADA) AND ARCHITECTURAL BARRIERS ACT (ABA) ACCESSIBILITY GUIDELINES.
- C. WHERE RAISED LETTERS AND BRAILLE SIGNAGE IS PROVIDED AT A SINGLE DOOR, THE SIGN SHALL BE LOCATED ON THE LATCH SIDE OF THE DOOR AND MUST BE MOUNTED IN ACCORDANCE WITH CURRENT ADA STANDARDS. WHERE TACTILE SIGNAGE IS PROVIDED AT A PAIR OF DOUBLE DOORS, THE SIGN SHALL BE LOCATED ON THE RIGHT SIDE OF THE RIGHT HAND DOOR. IF WALL SPACE IS NOT AVAILABLE FOR SIGNAGE PER MOUNTING STANDARDS, SIGNS SHALL BE INSTALLED PER CURRENT ADA STANDARDS ON NEAREST ADJACENT WALL, SO THAT THE CLEAR FLOOR SPACE OF 18 INCHES BY 18 INCHES, MIN., CENTERED ON TACTILE CHARACTERS, IS PROVIDED BEYOND THE ARC OF ANY DOOR SWING BETWEEN THE CLOSED POSITION AND 45 DEGREE OPEN POSITION.
- D. PROVIDE OWNER WITH PAPER AND SOFTWARE FOR CREATING TEXT AND SYMBOLS FOR OWNER PRODUCTION OF PAPER INSERTS ON OWNER'S COMPUTER/PRINTERS AFTER SIGNAGE INSTALLATION.
- E. FURNISH TWO DEVICES TO ASSIST REMOVAL/REPLACEMENT OF PAPER INSERTS.
- F. LOCATE MAXIMUM OCCUPANCY SIGNS WHERE DIRECTED BY OWNER.
- G. COORDINATE ALL SIGNAGE COPY AND GRAPHICS WITH OWNER PRIOR TO ORDER AND INSTALLATION.



Farnsworth GROUP

2211 W. BRADLEY AVENUE
CHAMPAIGN, ILLINOIS 61821
(217) 352-7408 / info@f-w.com

www.f-w.com
Engineers | Architects | Surveyors | Scientists

ISSUE:		
#	DATE:	DESCRIPTION:
1	05/05/2025	ADD 04

Bid Set
04/03/2025

PROJECT:
Robinson CUSD #2

Washington
Elementary
Renovation & Addition

507 W. Condit St. Robinson, IL
62454

DATE:	04/03/2025
DESIGNED:	HMM
DRAWN:	HMM
REVIEWED:	LLN

SHEET TITLE:
ENLARGED SIGNAGE
PLAN - AREA A

SHEET NUMBER:

14.1A

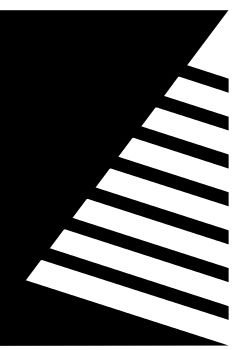
PROJECT NO.: 02401781.001

1 ENLARGED SIGNAGE PLAN - AREA A
SCALE: 1/8" = 1'-0"



KEY PLAN
SCALE: NO SCALE





Farnsworth GROUP

2211 W. BRADLEY AVENUE
CHAMPAIGN, ILLINOIS 61821
(217) 352-7408 / info@f-w.com

www.f-w.com
Engineers | Architects | Surveyors | Scientists

ISSUE	
#	DATE: DESCRIPTION:
1	04/22/2025 ADD 02
2	05/05/2025 ADD 04

FINISH PLAN GENERAL NOTES

- UNO ALL PARTITIONS TO RECEIVE PAINT, P-1.
- AT ALL LOCATIONS WHERE ACCENT IS DENOTED IN FINISH PLAN, CONTRACTOR SHALL PROVIDE ADDITIONAL PAINT COLOR. COLOR SHALL BE DETERMINED AT A LATER DATE & PROVIDED BY ARCHITECT.
- UNO ALL WALL BASE SHALL BE RESILIENT BASE, RB-1. ACCENT WALL COLORS TO RECEIVE THE COORESPONDING COLOR MATCHING WALL BASE.
- ALL FLOOR TRANSITIONS THAT CHANGE MATERIALS AND/OR CHANGE THICKNESS TO RECEIVE TRANSITION STRIP TO BE APPROVED BY ARCHITECT. SEE SHEET I3.1 FOR DETAILS.
- UNO ALL FIBER-REINFORCED PANELING, FRP-1 SHALL BE 4'-0"W x 4'-0"H AT MOP SINKS.
- UNO ALL METAL DOORS TO RECEIVE PAINT, P-10, REFER TO DOOR SCHEDULE FOR ADDITIONAL INFORMATION.
- UNO ALL HOLLOW METAL FRAMES TO RECEIVE PAINT, P-10, REFER TO DOOR SCHEDULE FOR ADDITIONAL INFORMATION.
- UNO ALL WOOD DOORS TO BE, D-1, REFER TO DOOR SCHEDULE FOR ADDITIONAL INFORMATION.
- UNO ALL EXTERIOR WINDOW GLAZING TO RECEIVE NEW SOLID SURFACE WINDOW SILLS, SS-1.
- UNO ALL EXTERIOR WINDOW AND STOREFRONT GLAZING TO RECEIVE WINDOW ROLLER SHADES, RS-2. REFER TO DETAILS.
- UNO ALL EXPOSED STRUCTURE, DUCT WORK, PIPING & CONDUITS TO RECEIVE PAINT COLOR ACCENT TO MATCH COORESPONDING ACCENT WALL AND FLOOR COLOR.
- UNO ALL HANDRAILS TO BE PAINTED, P-10.
- FURNITURE IS SHOWN FOR REFERENCE ONLY AND IS INCLUDED IN A SEPARATE CONTRACT.

FINISH KEYNOTES

- PAINT COLOR TO MATCH ADJACENT CLASSROOM PAINT ACCENT COLOR. SEE FINISH PLANS.
- ALIGN PAINT TRANSITION TO EDGE OF SOFFIT OVERHEAD.
- PROVIDE METAL EDGE TRIM TO EXPOSED TILE EDGES AND AT WAINSCOT TOP.
- PROVIDE METAL EDGE TRIM TO TOP OF FRP PANELING.
- ACCENT COLOR IS DEPENDANT ON ROOM. SEE FINISH PLANS.
- FABRIC COLOR IS DEPENDANT ON ROOM. SEE FINISH PLANS.
- PAINTED WALL DESIGN USING P-3, P-4, P-5, P-6, P-7, AND P-8. SEE DETAIL #4/A8.11 FOR DESIGN.
- PAINTED WALL DESIGN USING P-3, P-4, P-5, P-6, P-7, AND P-8. SEE DETAIL #6/A8.10 FOR DESIGN.
- PAINTED WALL DESIGN USING P-3, P-4, P-5, P-6, P-7, AND P-8. SEE DETAIL #5/A8.10 FOR DESIGN.
- COLUMN TO BE PAINTED, P-10
- DESIGN TO ALIGN FROM FLOOR TO WALL. SEE INTERIOR FINISH PLANS.
- PROTECT EXISTING WALL TILE AND CMU FINISH THROUGHOUT DURATION OF CONSTRUCTION.

Bid Set
04/03/2025

PROJECT:
Robinson CUSD #2

Washington Elementary Renovation & Addition

507 W. Condit St. Robinson, IL
62454

DATE: 04/03/2025

DESIGNED: HMM

DRAWN: HMM

REVIEWED: LLN

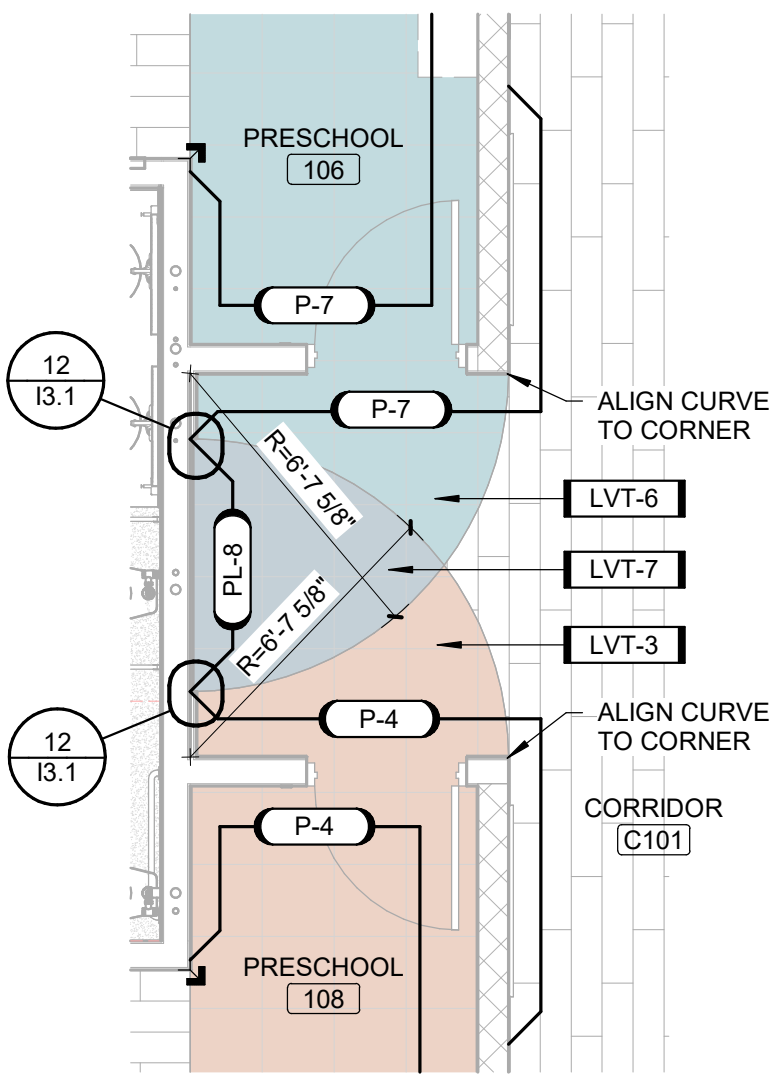
SHEET TITLE:

ENLARGED FINISH PLANS

SHEET NUMBER:

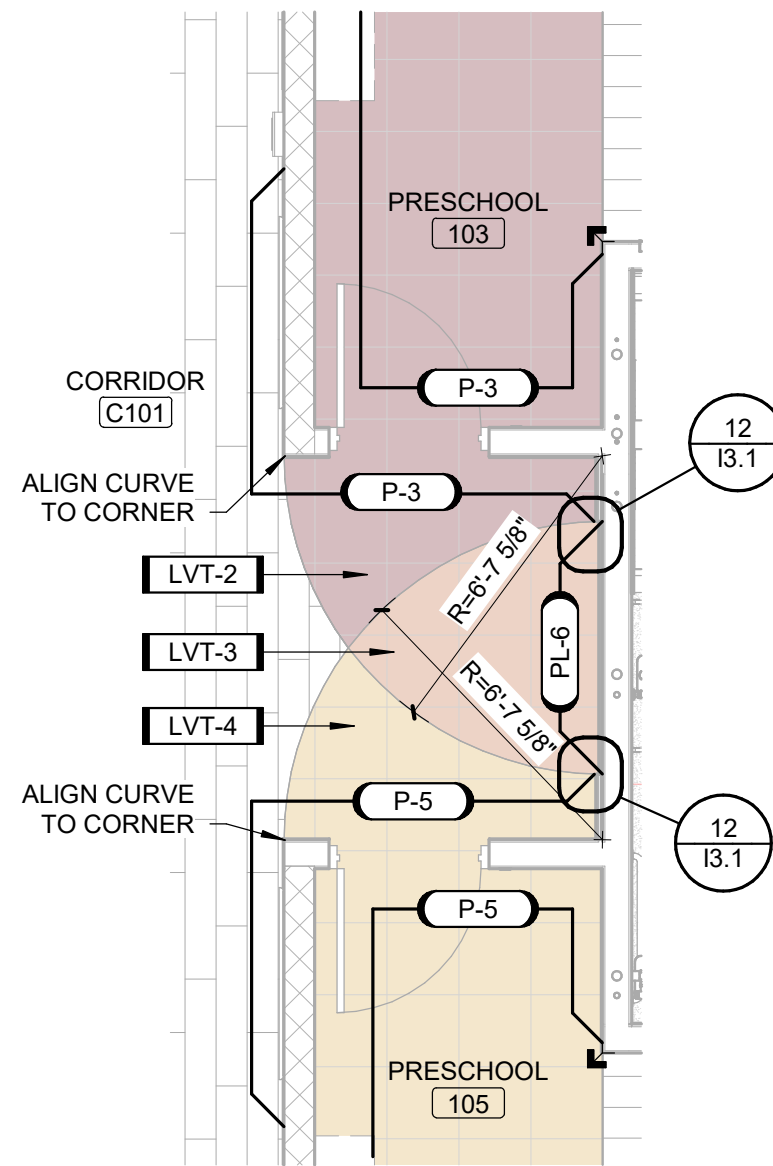
18.1

PROJECT NO.: 02401781.001



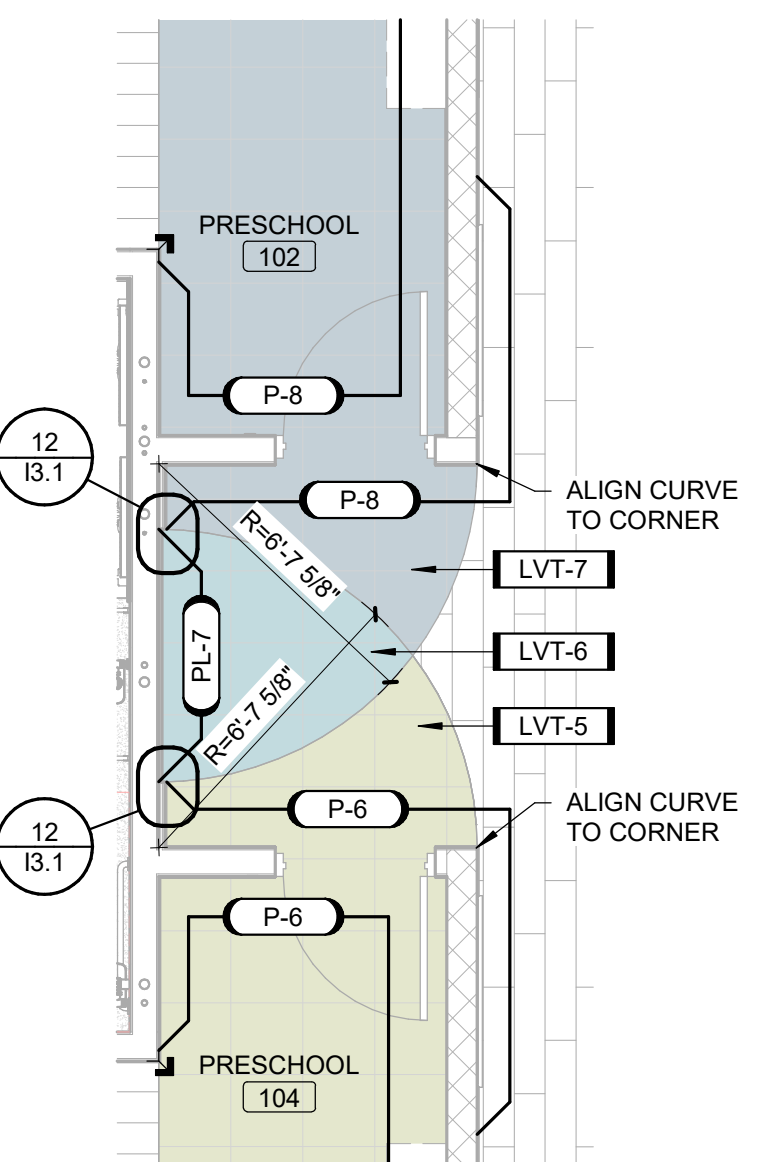
ENLARGED FINISH PLAN - AREA A - PRESCHOOL 106 & 108 ENTRY

SCALE: 1/4" = 1'-0"



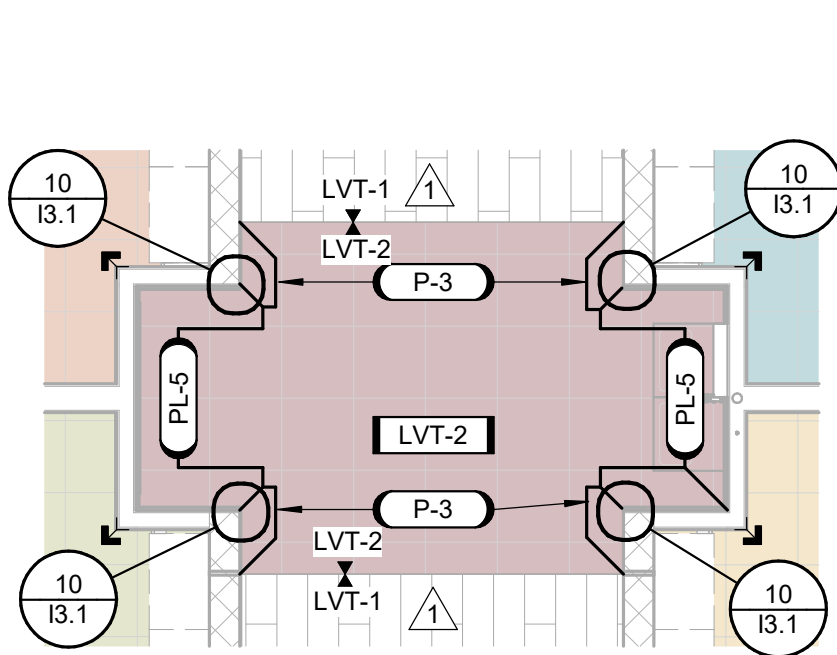
ENLARGED FINISH PLAN - AREA A - PRESCHOOL 103 & 105 ENTRY

SCALE: 1/4" = 1'-0"



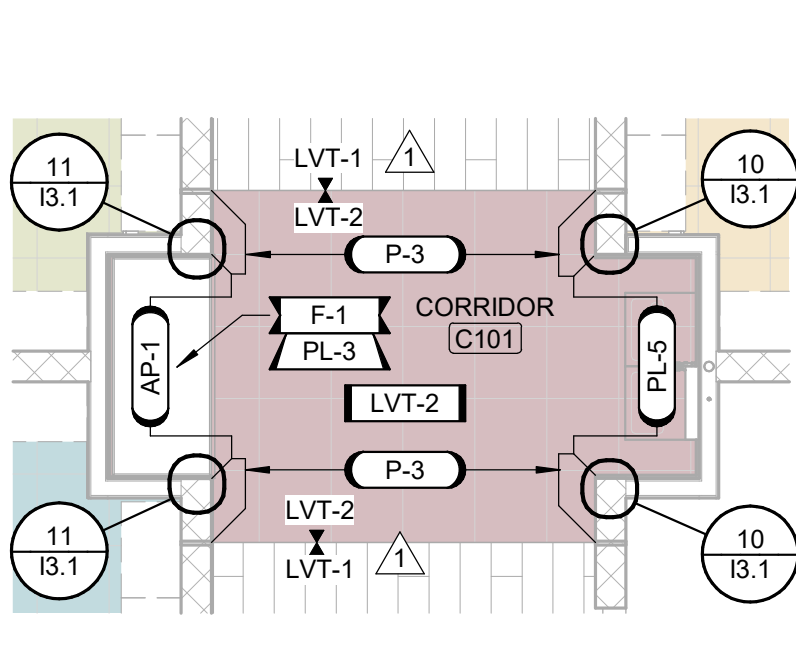
ENLARGED FINISH PLAN - AREA A - PRESCHOOL 102 & 104 ENTRY

SCALE: 1/4" = 1'-0"



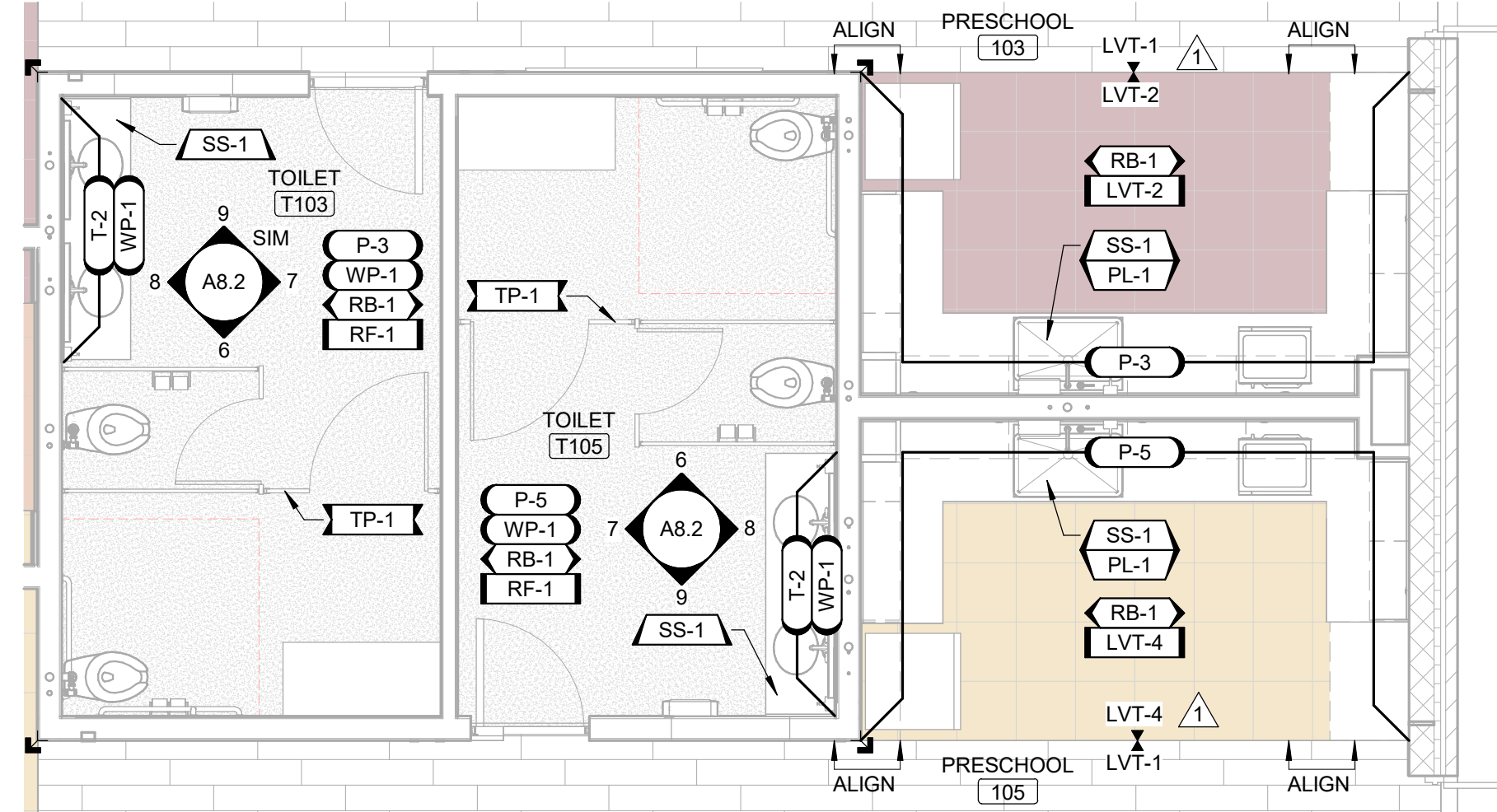
ENLARGED FINISH PLAN - AREA C - CORRIDOR C101 BENCH NICHES

SCALE: 1/4" = 1'-0"



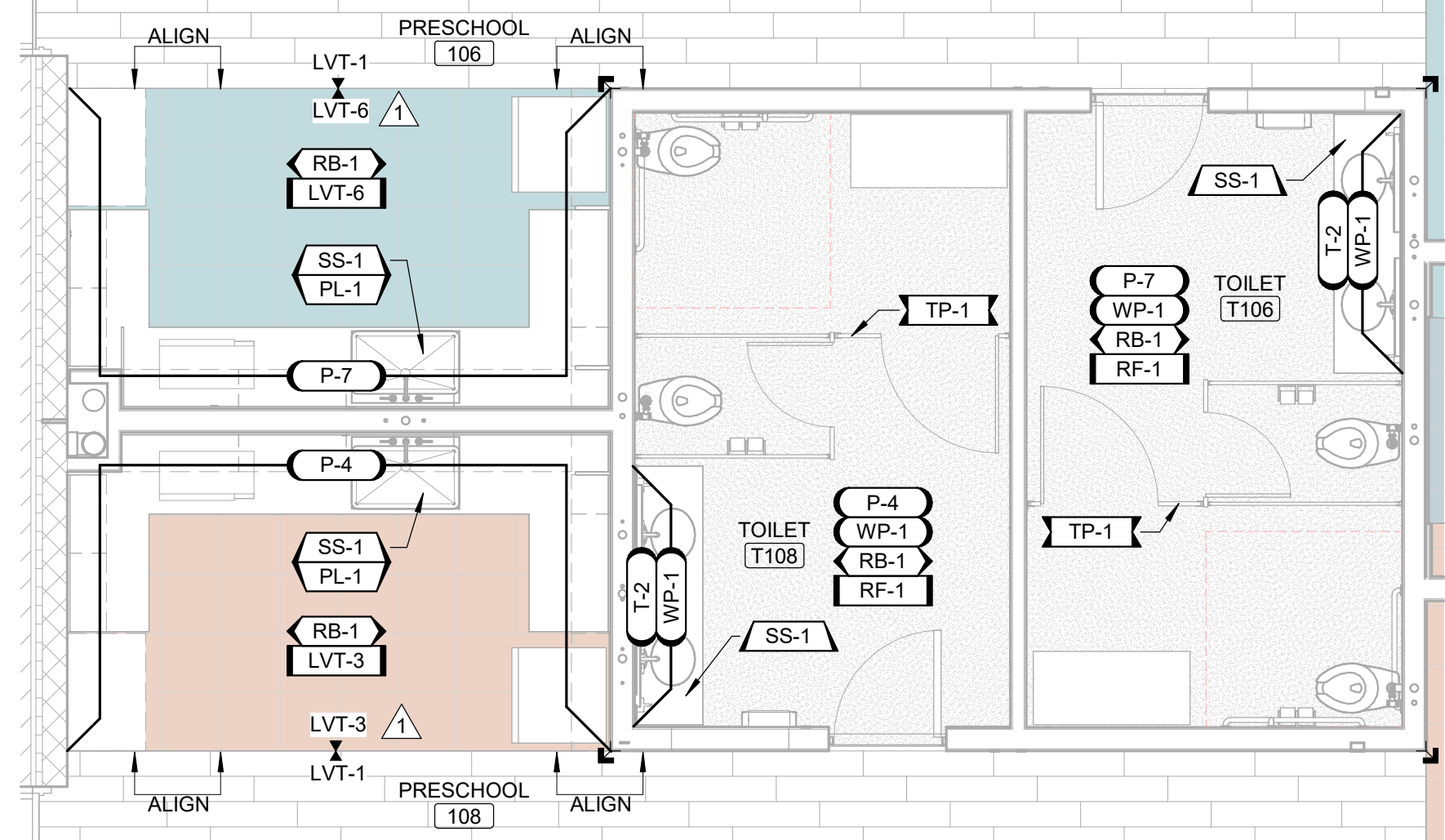
ENLARGED FINISH PLAN - AREA A - CORRIDOR C101 BENCH & WATER FOUNTAIN NICHES

SCALE: 1/4" = 1'-0"



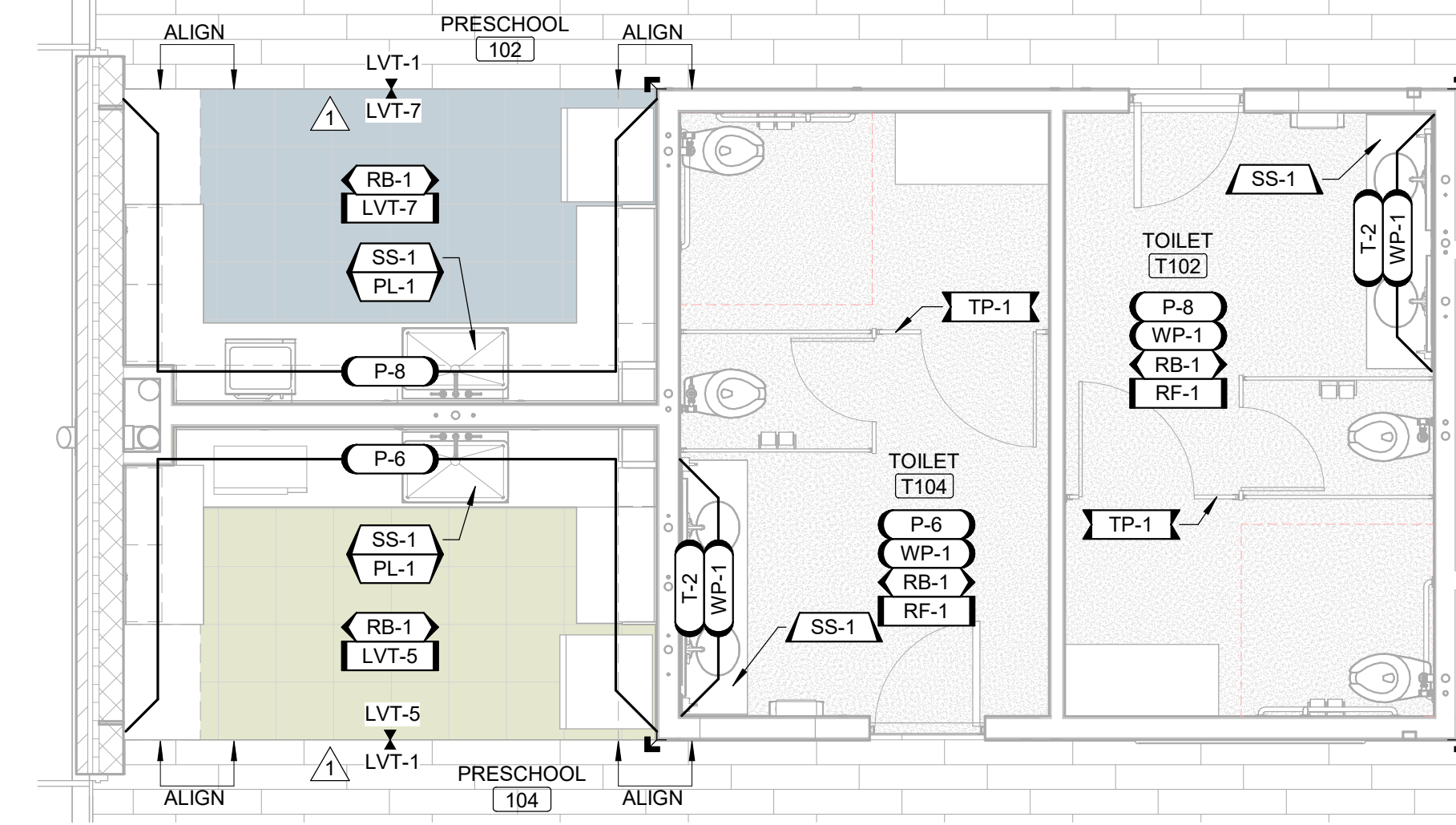
ENLARGED FINISH PLAN - AREA A - PRESCHOOL 103 & 105 KITCHENETTES AND TOILET ROOMS

SCALE: 1/4" = 1'-0"



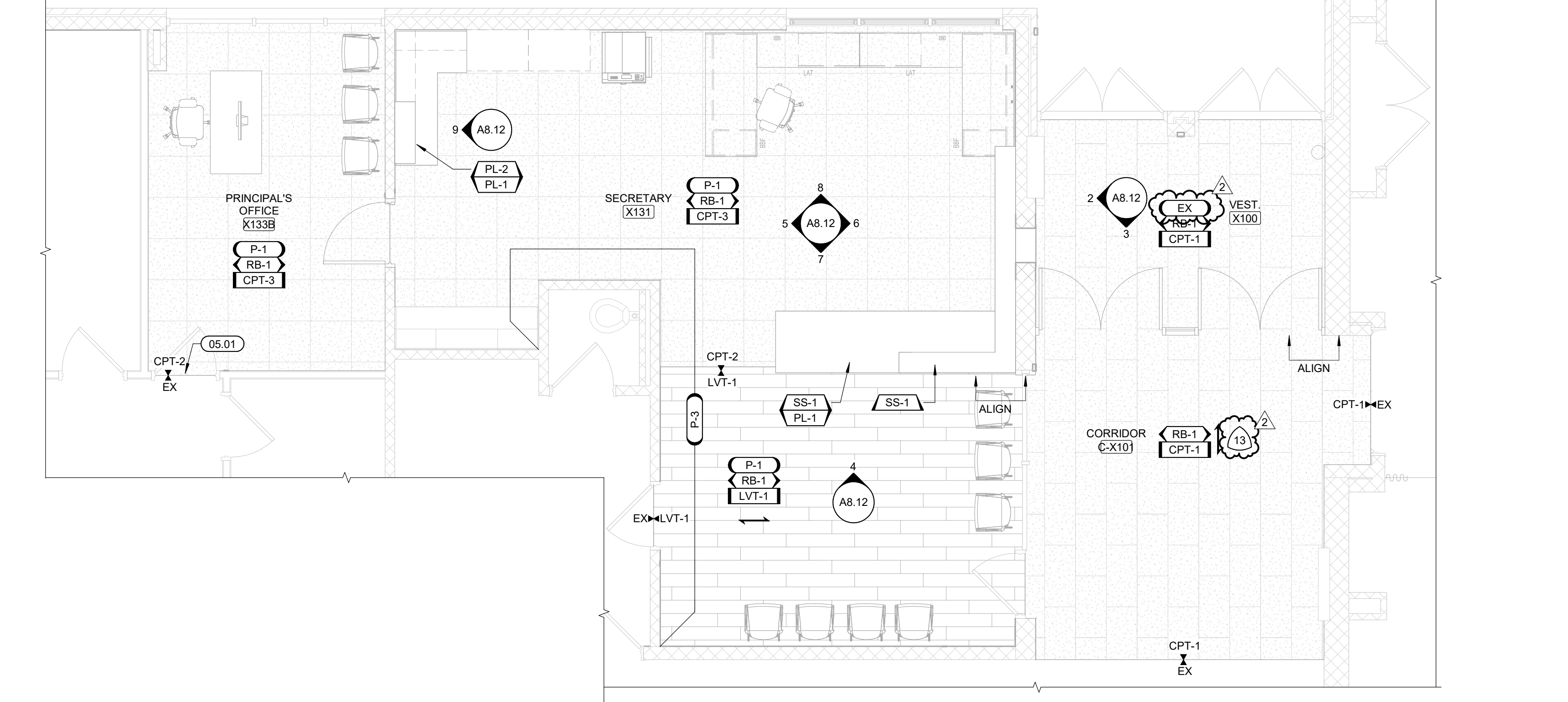
ENLARGED FINISH PLAN - AREA A - PRESCHOOL 106 & 108 KITCHENETTES AND TOILET ROOMS

SCALE: 1/4" = 1'-0"



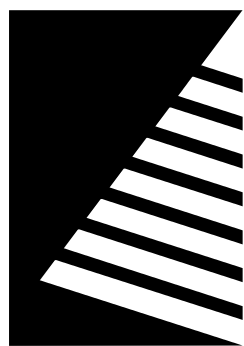
ENLARGED FINISH PLAN - AREA A - PRESCHOOL 102 & 104 KITCHENETTES AND TOILET ROOMS

SCALE: 1/4" = 1'-0"



ENLARGED FINISH PLAN - EXISTING VESTIBULE

SCALE: 1/4" = 1'-0"



Farnsworth GROUP

2211 W. BRADLEY AVENUE
CHAMPAIGN, ILLINOIS 61821
(217) 352-7408 / info@f-w.com

www.f-w.com
Engineers | Architects | Surveyors | Scientists

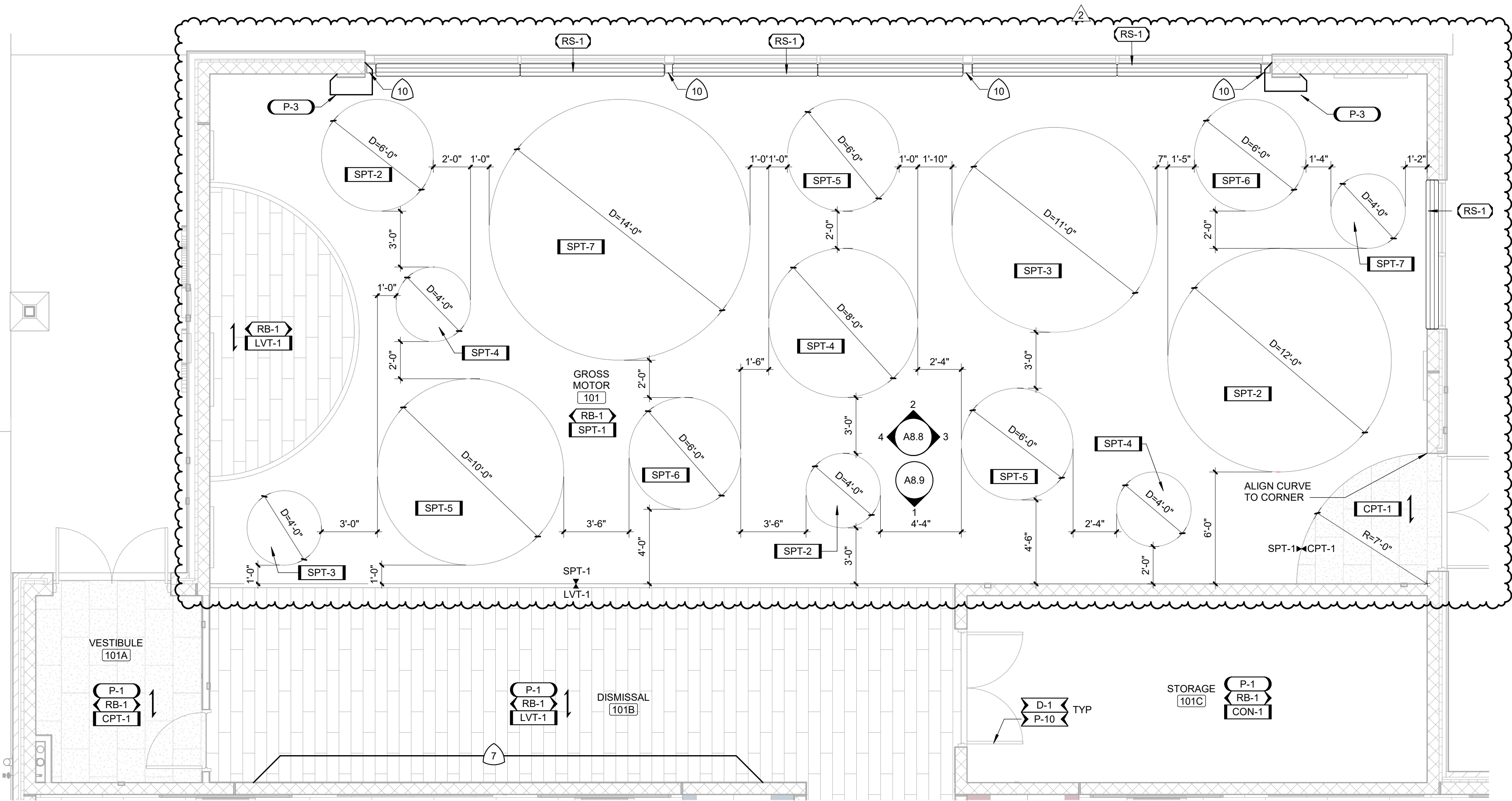
ISSUE:		
#	DATE:	DESCRIPTION:
1	04/22/2025	ADD 02
2	05/05/2025	ADD 04

FINISH PLAN GENERAL NOTES

- A. UNO ALL PARTITIONS TO RECEIVE PAINT, P-1.
- B. AT ALL LOCATIONS WHERE ACCENT IS DENOTED IN FINISH PLAN, CONTRACTOR SHALL PROVIDE ADDITIONAL PAINT COLOR. COLOR SHALL BE DETERMINED AT A LATER DATE & PROVIDED BY ARCHITECT.
- C. UNO ALL WALL BASE SHALL BE RESILIENT BASE, RB-1. ACCENT WALL COLORS TO RECEIVE THE COORESPONDING COLOR MATCHING WALL BASE.
- D. ALL FLOOR TRANSITIONS THAT CHANGE MATERIALS AND/OR CHANGE THICKNESS TO RECEIVE TRANSITION STRIP TO BE APPROVED BY ARCHITECT. SEE SHEET 13.1 FOR DETAILS.
- E. UNO ALL FIBER-REINFORCED PANELING, FRP-1 SHALL BE 4'-0"W x 4'-0"H AT MOP SINKS.
- F. UNO ALL METAL DOORS TO RECEIVE PAINT, P-10, REFER TO DOOR SCHEDULE FOR ADDITIONAL INFORMATION.
- G. UNO ALL HOLLOW METAL FRAMES TO RECEIVE PAINT, P-10, REFER TO DOOR SCHEDULE FOR ADDITIONAL INFORMATION.
- H. UNO ALL WOOD DOORS TO BE, D-1, REFER TO DOOR SCHEDULE FOR ADDITIONAL INFORMATION.
- I. UNO ALL EXTERIOR WINDOW GLAZING TO RECEIVE NEW SOLID SURFACE WINDOW SILLS, SS-1.
- J. UNO ALL EXTERIOR WINDOW AND STOREFRONT GLAZING TO RECEIVE WINDOW ROLLER SHADES, RS-2. REFER TO DETAILS.
- K. UNO ALL EXPOSED STRUCTURE, DUCT WORK, PIPING & CONDUITS TO RECEIVE PAINT COLOR ACCENT TO MATCH COORESPONDING ACCENT WALL AND FLOOR COLOR.
- L. UNO ALL HANDRAILS TO BE PAINTED, P-10.
- M. FURNITURE IS SHOWN FOR REFERENCE ONLY AND IS INCLUDED IN A SEPARATE CONTRACT.

FINISH KEYNOTES

- 1 PAINT COLOR TO MATCH ADJACENT CLASSROOM PAINT ACCENT COLOR. SEE FINISH PLANS.
- 2 ALIGN PAINT TRANSITION TO EDGE OF SOFFIT OVERHEAD.
- 3 PROVIDE METAL EDGE TRIM TO EXPOSED TILE EDGES AND AT WAINSCOT TOP.
- 4 PROVIDE METAL EDGE TRIM TO TOP OF FRP PANELING.
- 5 ACCENT COLOR IS DEPENDANT ON ROOM. SEE FINISH PLANS.
- 6 FABRIC COLOR IS DEPENDANT ON ROOM. SEE FINISH PLANS.
- 7 PAINTED WALL DESIGN USING P-3, P-4, P-5, P-6, P-7, AND P-8. SEE DETAIL #4/A8.11 FOR DESIGN.
- 8 PAINTED WALL DESIGN USING P-3, P-4, P-5, P-6, P-7, AND P-8. SEE DETAIL #6/A8.10 FOR DESIGN.
- 9 PAINTED WALL DESIGN USING P-3, P-4, P-5, P-6, P-7, AND P-8. SEE DETAIL #5/A8.10 FOR DESIGN.
- 10 COLUMN TO BE PAINTED, P-10
- 11 DESIGN TO ALIGN FROM FLOOR TO WALL. SEE INTERIOR FINISH PLANS.
- 12 RADIUS DETERMINED FROM FLOOR DESIGN. SEE INTERIOR FINISH PLANS.
- 13 PROTECT EXISTING WALL TILE AND CMU FINISH THROUGHOUT DURATION OF CONSTRUCTION.



1 ENLARGED FINISH PLAN - AREA A - GROSS MOTOR
SCALE: 1/4" = 1'-0"



Bid Set
04/03/2025

PROJECT:
Robinson CUSD #2

Washington
Elementary
Renovation & Addition

507 W. Condit St. Robinson, IL
62454

DATE: 04/03/2025

DESIGNED: HMM

DRAWN: HMM

REVIEWED: LLN

SHEET TITLE:

ENLARGED FINISH
PLANS

SHEET NUMBER:

18.3

PROJECT NO.: 02401781.001



9 RENDERING - LARGE RESTROOM CORRIDOR
SCALE: 12" = 1'-0"



6 RENDERING - PRESCHOOL CORRIDOR
SCALE: 12" = 1'-0"



3 RENDERING - CLASSROOM RESTROOM
SCALE: 12" = 1'-0"



8 RENDERING - LARGE RESTROOM
SCALE: 12" = 1'-0"



5 RENDERING - KINDERGARTEN CORRIDOR
SCALE: 12" = 1'-0"



2 RENDERING - CLASSROOM
SCALE: 12" = 1'-0"



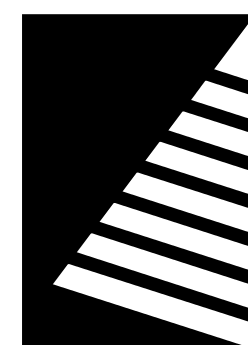
7 RENDERING - PRESCHOOL CORRIDOR NICHES
SCALE: 12" = 1'-0"



4 RENDERING - CLASSROOM ENTRANCE
SCALE: 12" = 1'-0"



1 RENDERING - GROSS MOTOR 101 v2
SCALE: 12" = 1'-0"



Farnsworth GROUP

2211 W. BRADLEY AVENUE
CHAMPAIGN, ILLINOIS 61821
(217) 352-7408 / info@f-w.com

www.f-w.com
Engineers | Architects | Surveyors | Scientists

ISSUE:
DATE: DESCRIPTION:
1 05/05/2025 ADD 04

Bid Set
04/03/2025

PROJECT:
Robinson CUSD #2

Washington Elementary Renovation & Addition

507 W. Condit St. Robinson, IL
62454

DATE: 04/03/2025
DESIGNED: APH/HMM
DRAWN: HMM
REVIEWED: APH/SCB

SHEET TITLE:
INTERIOR
RENDERINGS

SHEET NUMBER:

R0.1

PROJECT NO.: 02401781.001