

**Addendum Number:** 02

**Addendum Issue Date:** April 25, 2022

**Owner:** Crawford County Highway Department

**Project Name:** New Shop & Office

**Project Number:** 0210855.00

**Containing:** 1 Pages; 4 Drawings; 0 Specifications

*This addendum amends the drawings and specifications of the above reference project and is hereby incorporated into the contract documents as part thereof. Bidders must acknowledge receipt of this Addendum in the space provided on the Bid Form. **FAILURE TO DO SO MAY SUBJECT BIDDER TO DISQUALIFICATION.***

**General:**

1. The bid time was noted in error at the bottom of the last addendum. The bid date has remained unchanged and is Friday, April 29 at 2:00 pm.
2. Radiant floor section located in the Mechanic's Bays 116, Wash Bay 117, and Storage Bays 118 shall contain the following: 8" reinforced concrete, R-10 insulation as specified in 07 2100 – Thermal Insulation, vapor barrier as per 03 0516 – Underslab Vapor Barrier, compacted subgrade granular fill.

**Drawings:**

1. C1.1 – GENERAL NOTES AND LEGENDS

- a. The Concrete Drive/Approach Pad and Office Parking" note shall be modified to indicate: "Concrete pads outside of the building shall be installed to allow ease of access to the building. 8" thickness is the minimum thickness of concrete that shall be allowed in all areas except the office parking. Welded wire reinforcement per IDOT STD 420701-03 shall be placed in the concrete. Concrete shall be Class PV per IDOT standard specifications, with Type B finish. Contraction or control joints shall be a maximum of 15' apart.

Office parking shall be a minimum of 6" thickness, reinforced, Type B finish, ADA compliant, and striped for parking per the drawings."

2. C3.1 – SITE PLAN

- a. The parking area in front of the office area (25.0' x 70.95') shall be 6" reinforced concrete.

3. C3.1-A – GAS SERVICE ADDENDUM

- a. This sheet shall be added to the drawing set. It shows the connection point for the gas service. The contractor shall include all labor, material, and equipment required to install the new gas line from the meter to the proposed building.

4. A7.1 – PARTITION TYPES, DOOR SCHEDULE, ELEVATIONS, AND DETAILS

- a. Remove detail 2 – this detail is not needed.
- b. All fire rated walls shall follow head-of-wall detail UL #HW-D-0927.
- c. UL assembly types have been added to P4 & P5.

- d. Partition type P6 has been updated to show a liner panel on one side only. The liner panel shall be added to the side facing the Mechanic's Bay.
  - e. Partition type P1C has been added.
5. A7.2 – DOOR AND WINDOW DETAILS
- a. Details 1, 2, and 3 have been revised to show the 2 ½" metal studs and 5/8" gypsum board on the interior side of the girts.
6. A8.1 – INTERIOR ELEVATIONS AND ENLARGED PLANS
- a. The walls located around the columns shall be partition type P1C.
7. M6.1 – RADIANT FLOOR SCHEDULE
- a. The tube diameter and spacing may be changed based on delegated design by the radiant floor heating system manufacturer to provide a heating density of 22.3 BTH/SF as scheduled. Pumps P-3 and P-4 shall be sized to provide the required pressure differential and flow rate of the radiant floor design.

**Specifications:**

- 1. No specification revisions.

**Bids are Due:** April 29, 2022 / 2:00 PM local time at *CCHD Main Office (10312 North 900<sup>th</sup> Street, Robinson, IL 62454.)*

**END OF ADDENDUM**

**Issued By:**

FARNSWORTH GROUP, INC.

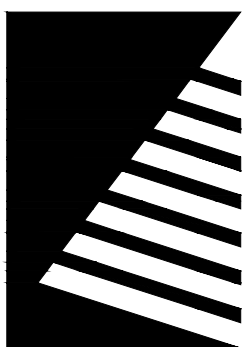
Scott Burge

Architectural Manager

**Attachments:**

*Drawings:* C3.1-A, A7.1, A7.2, A8.1.

*Specifications:* None.



# Farnsworth GROUP

2211 WEST BRADLEY AVENUE  
CHAMPAIGN, ILLINOIS 61821  
(217) 352-7408 / info@f-w.com

www.f-w.com  
Engineers | Architects | Surveyors | Scientists

ISSUE:	
#	DATE: DESCRIPTION:
1	04/22/2022 GAS SERVICE ADDENDUM

**100% Permit & Bid Set**  
04/06/2022

PROJECT:  
Crawford County Highway  
Department (CCHD)

## Shop & Office

10312 N 900th Street  
Robinson, IL 62454

DATE: 04/22/2022

DESIGNED: RRN

DRAWN: GAB/RRN

REVIEWED: ACH

FIELD BOOK NO.: EFF10 PG10-12

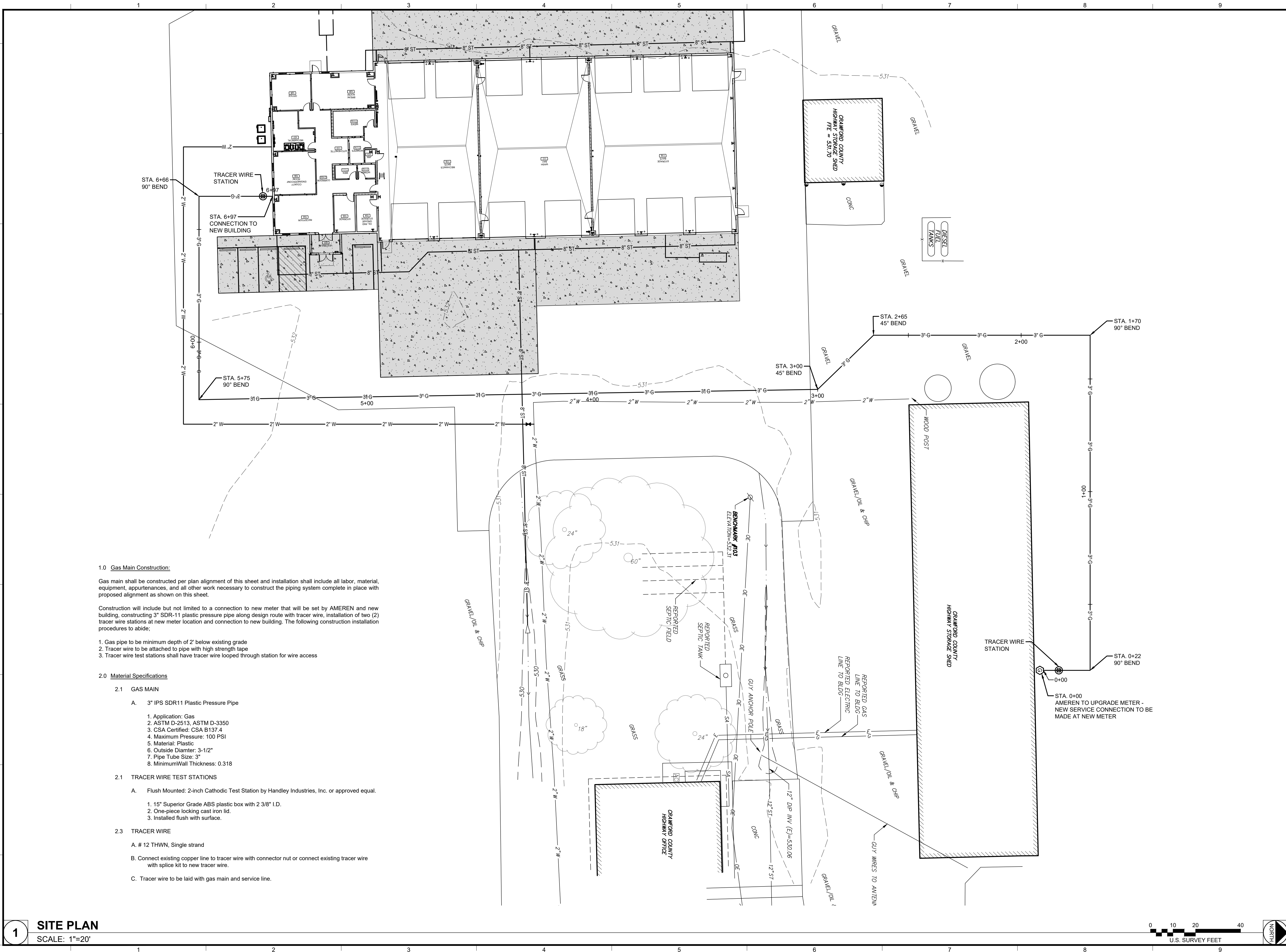
SHEET TITLE:

## GAS SERVICE ADDENDUM

SHEET NUMBER:

**C3.1-A**  
ADDENDUM SHEET

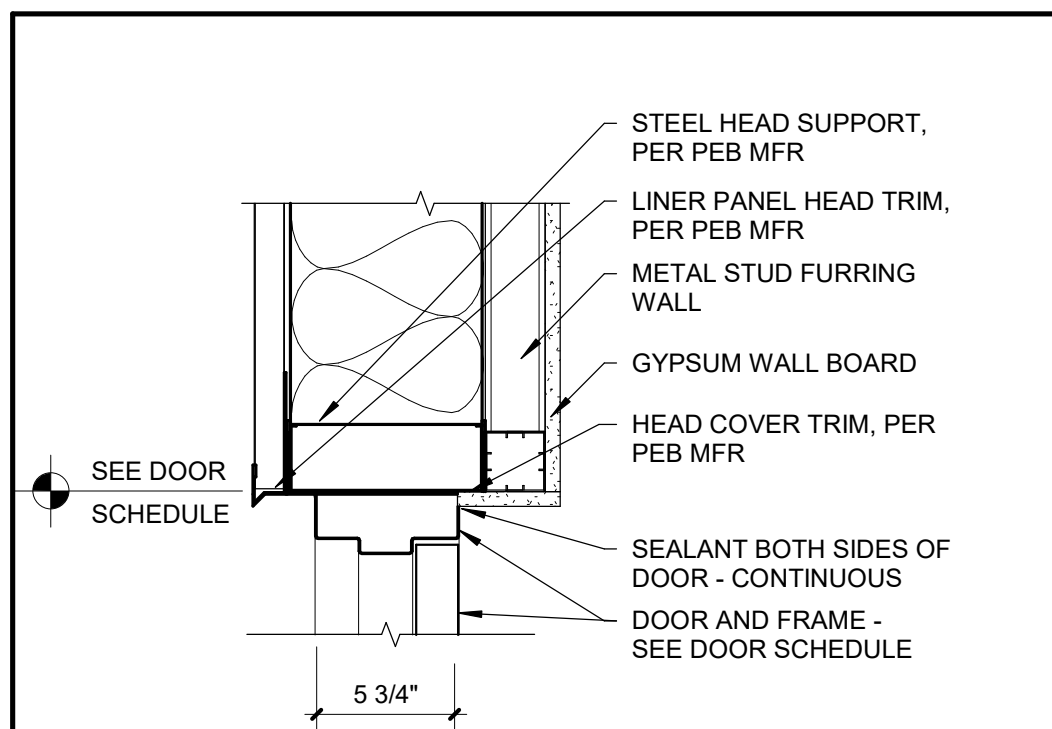
PROJECT NO.: 0210855.00



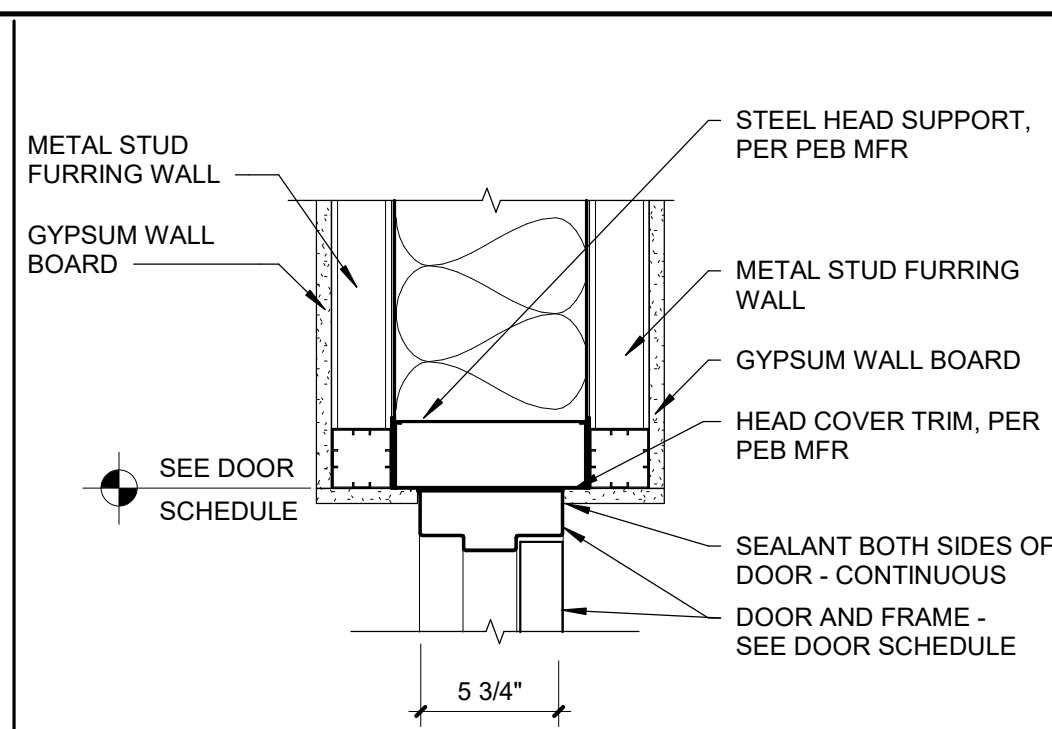
**1 SITE PLAN**  
SCALE: 1"=20'

0 10 20 40  
U.S. SURVEY FEET

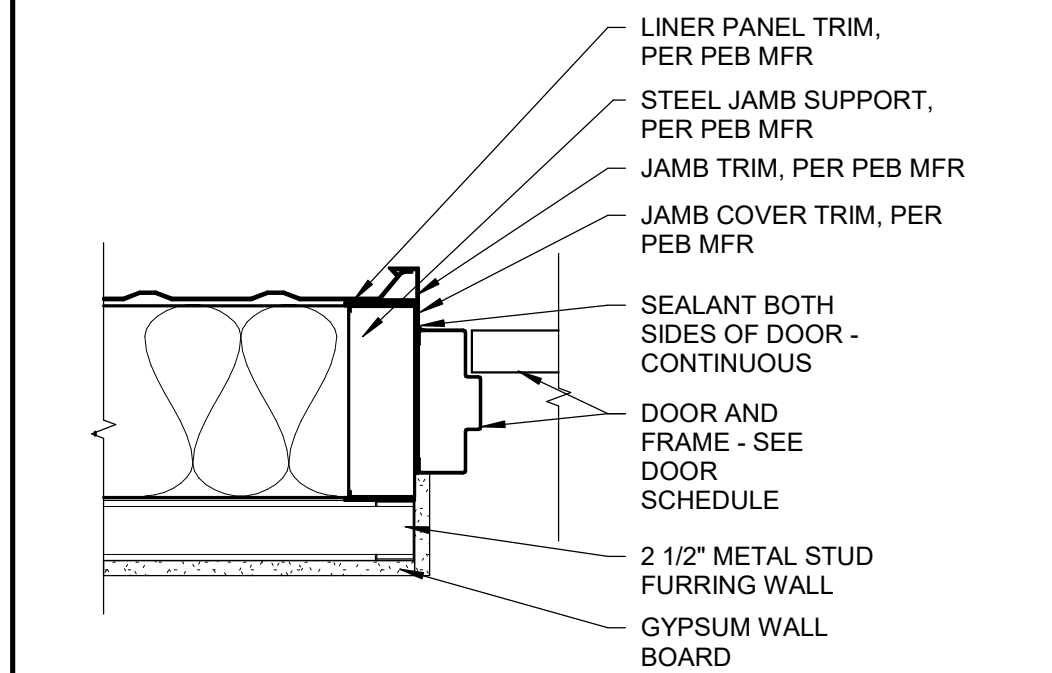




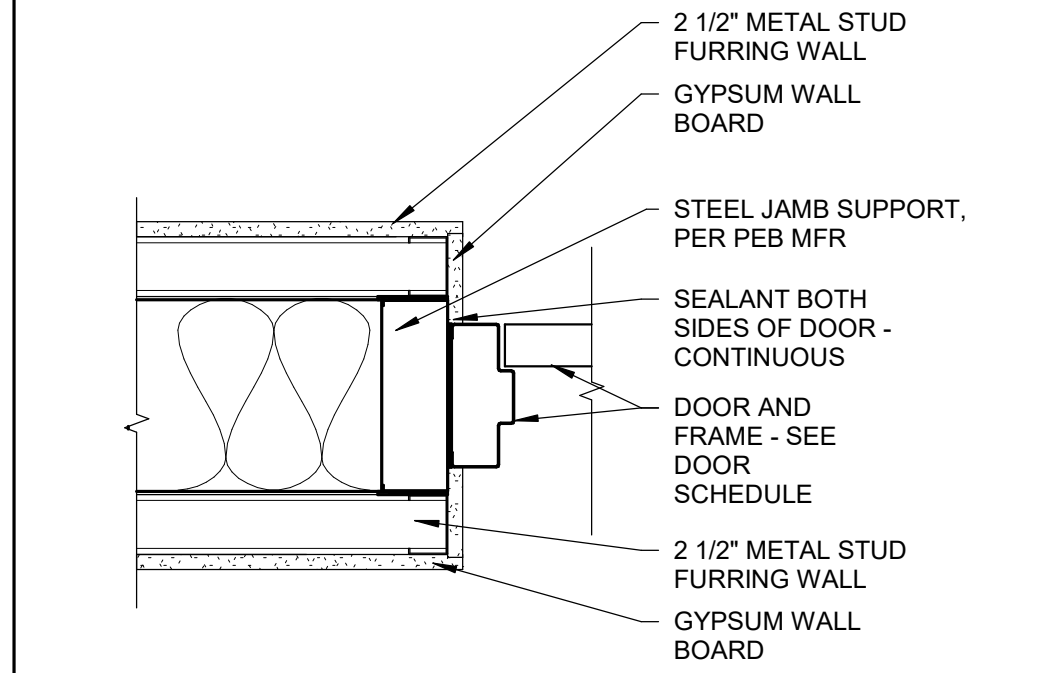
**11 METAL PANEL DOOR HEAD**  
SCALE: 1 1/2" = 1'-0"



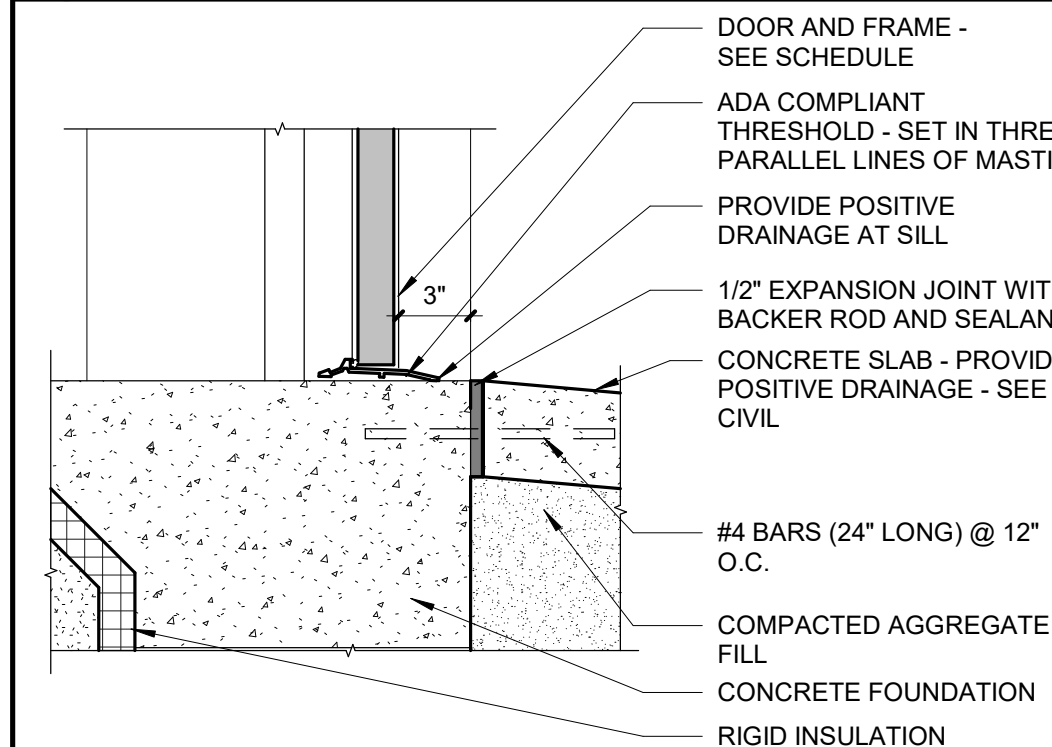
**6 DOOR HEAD DETAIL @ FURRING**  
SCALE: 1 1/2" = 1'-0"



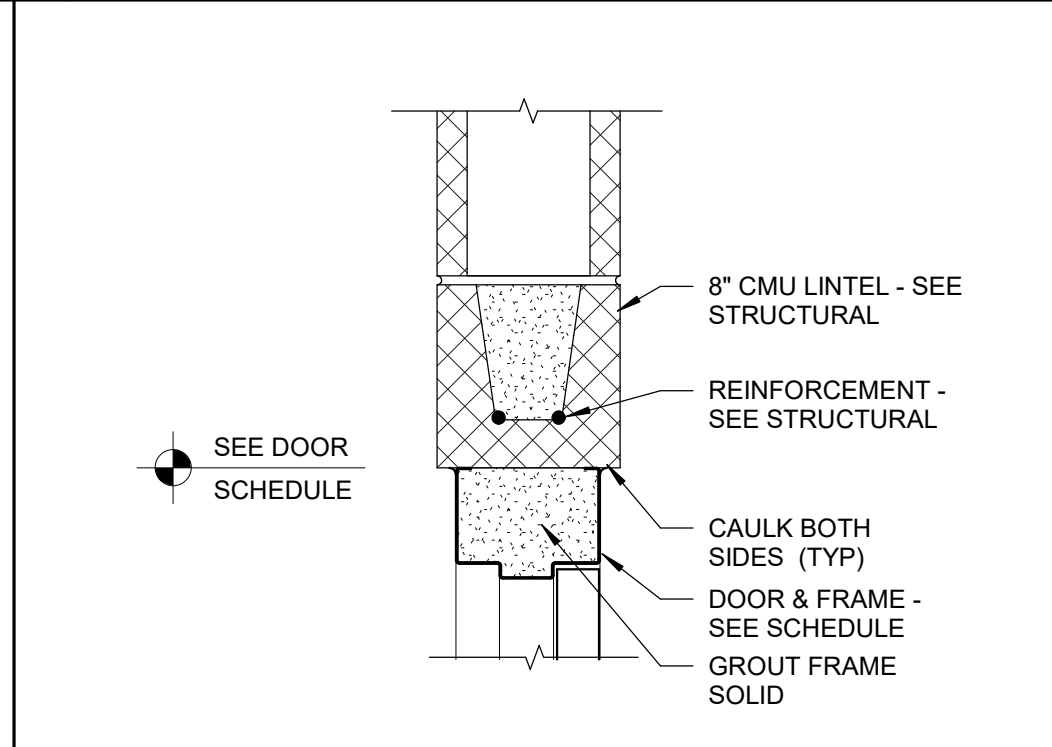
**10 METAL PANEL DOOR JAMB DETAIL**  
SCALE: 1 1/2" = 1'-0"



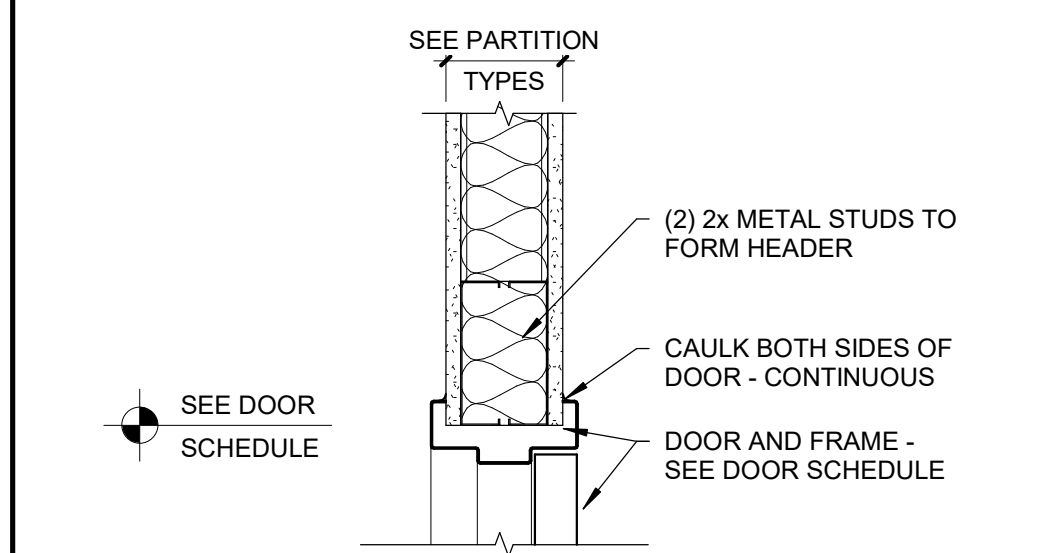
**5 DOOR JAMB DETAIL @ FURRING**  
SCALE: 1 1/2" = 1'-0"



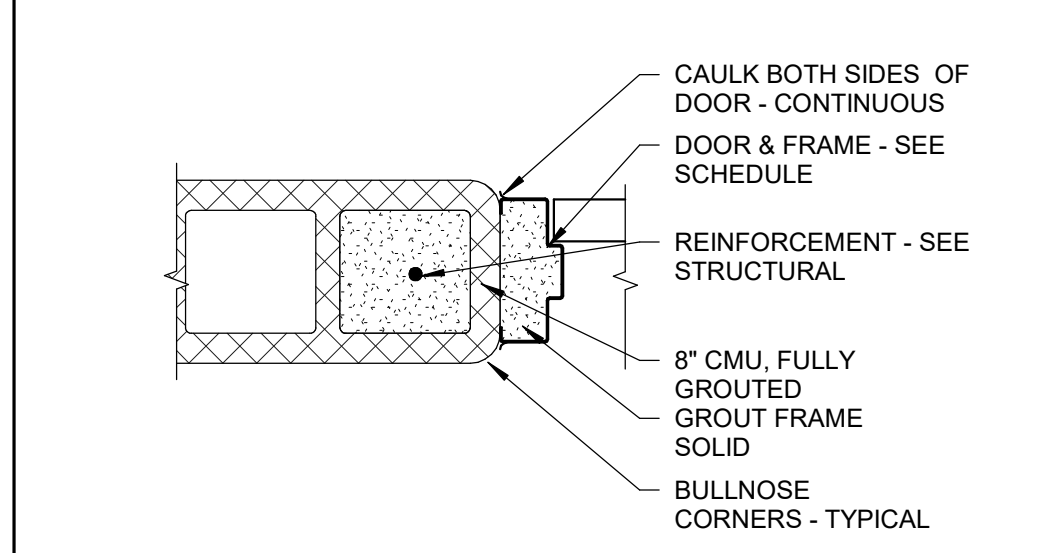
**9** **MAN DOOR - THRESHOLD**  
SCALE: 1 1/2" = 1'-0"



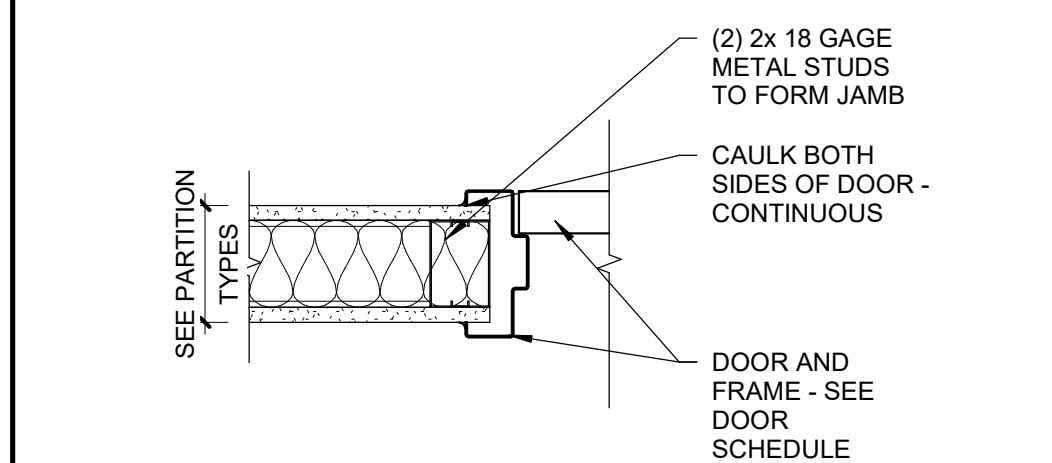
**4 HEAD DETAIL @ CMU**  
SCALE: 1 1/2" = 1'-0"



**8 HEAD DETAIL @ METAL STUD**  
SCALE: 1 1/2" = 1'-0"

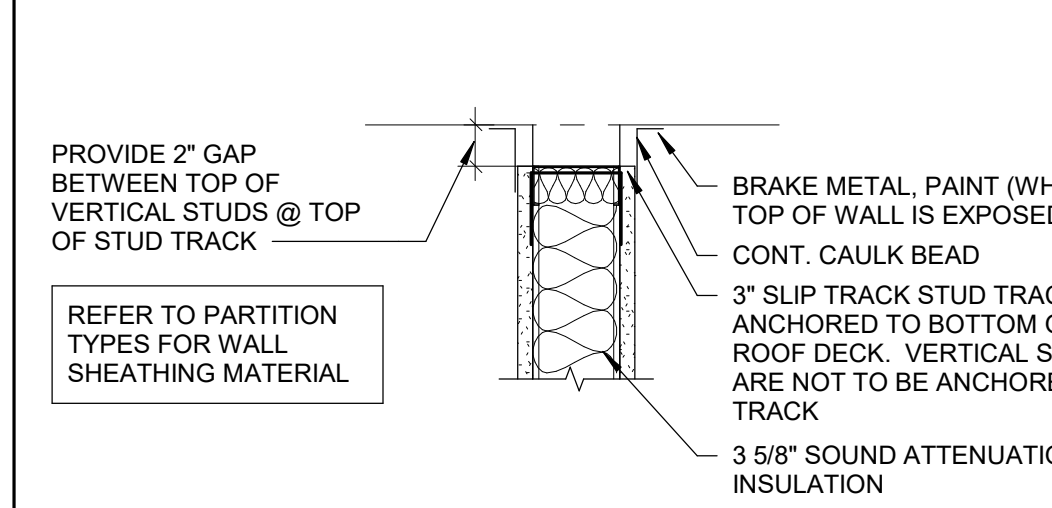


**3 JAMB DETAIL @ CMU**  
SCALE: 1 1/2" = 1'-0"



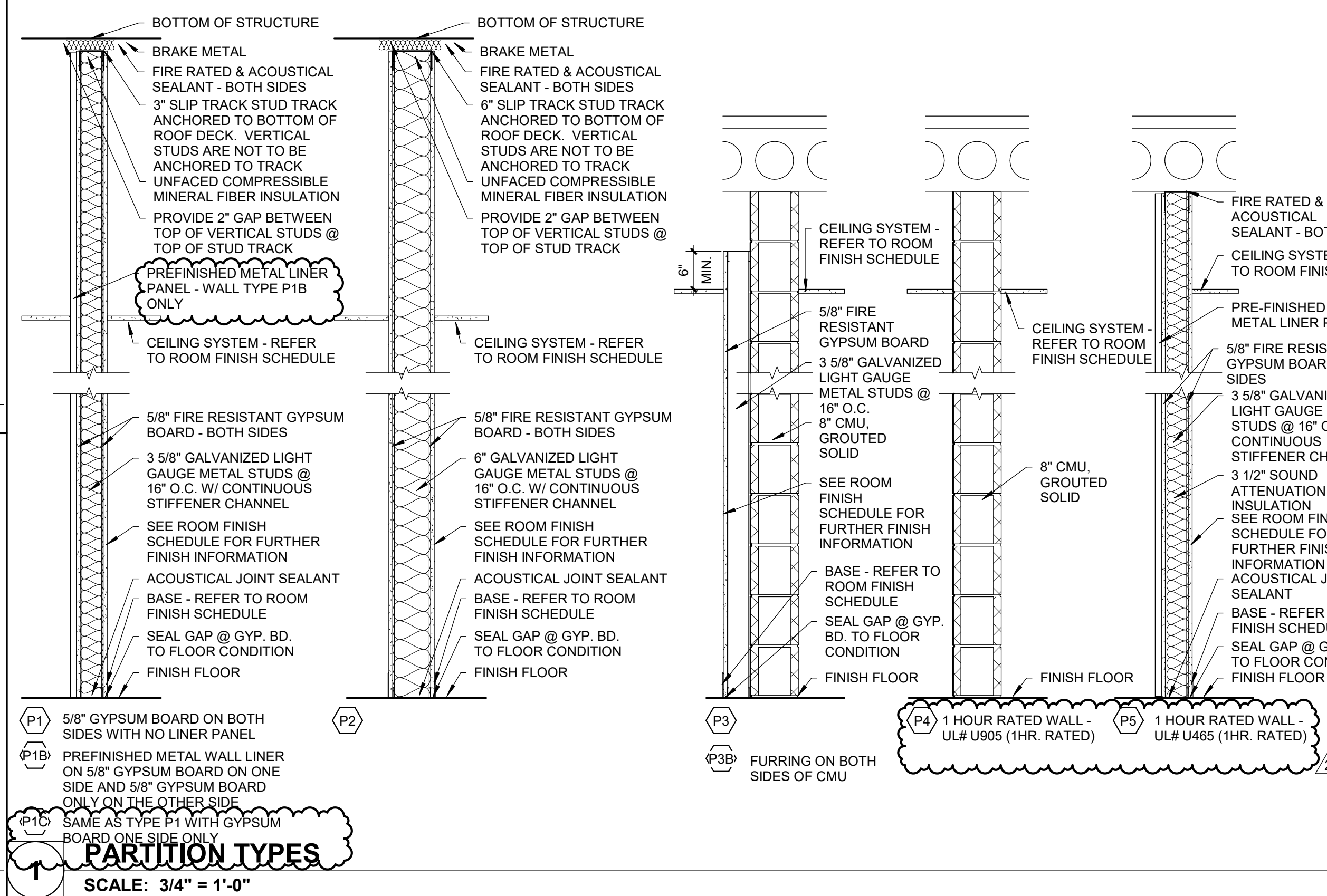
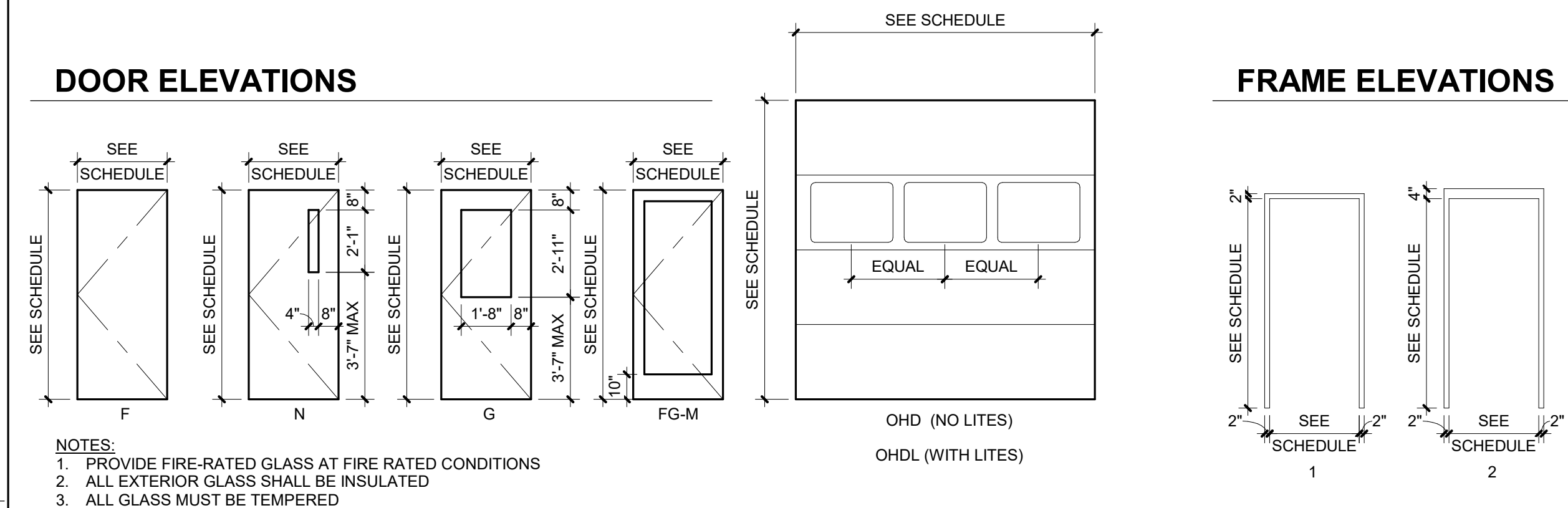
## 7 JAMB DETAIL @ METAL STUD

SCALE: 1 1/2" = 1'-0"



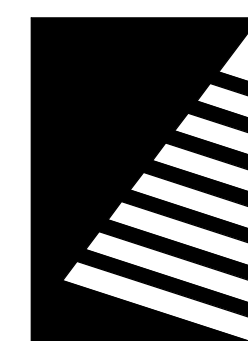
**2 DEFLECTION TRACK DETAIL**  
SCALE: 1 1/2" = 1'-0"

DOOR SCHEDULE															
DOOR						DOOR FRAME			HEAD	JAMB	THRESH		LDWR	NOTES	
NO.	WIDTH	HEIGHT	THICK	MAT'L	FINISH	ELEV	MAT'L	FINISH	ELEV	DETAIL NO.	DETAIL NO.	DETAIL NO.	LBL		SET
FIRST FLOOR															
101-01	6'-0"	7'-0"	1 3/4"	AL	PF	FG-M	AL	PF	1	11/A7.1	10/A7.1	9/A7.1		1.0	
102-01	6'-0"	7'-0"	1 3/4"	AL	PF	FG-M	AL	PF	1	6/A7.1	5/A7.1			4.0	
104-01	3'-0"	7'-0"	1 3/4"	HM	PNT	F	HM	PNT	1	11/A7.2	12/A7.2		45	5.0	
105-01	3'-0"	7'-0"	1 3/4"	HM	PNT	F	HM	PNT	2	14/A7.2	13/A7.2			7.0	
106-01	3'-0"	7'-0"	1 3/4"	HM	PNT	F	HM	PNT	1	8/A7.1	7/A7.1			10.0	
107-01	3'-0"	7'-0"	1 3/4"	HM	PNT	F	HM	PNT	1	8/A7.1	7/A7.1			6.0	
108-01	3'-0"	7'-0"	1 3/4"	HM	PNT	F	HM	PNT	1	8/A7.1	7/A7.1			10.0	
109-01	3'-0"	7'-0"	1 3/4"	HM	PNT	G	HM	PNT	1	8/A7.1	7/A7.1			8.0	
109-02	3'-0"	7'-0"	1 3/4"	IHM	PNT	N	IHM	PNT	1	11/A7.1	10/A7.1	9/A7.1		3.0	
109-03	3'-0"	7'-0"	1 3/4"	HM	PNT	G	HM	PNT	1	12/A7.2	11/A7.2		45	9.0	
113-01	3'-0"	7'-0"	1 3/4"	HM	PNT	F	HM	PNT	2	4/A7.1	3/A7.1		45	5.0	
116-01	16'-0"	16'-0"	3"	INSUL	PF	OHDL	-	-	-	1/A7.3	6/A7.2	9/A7.2		15.0	
116-02	16'-0"	16'-0"	3"	INSUL	PF	OHDL	-	-	-	1/A7.3	6/A7.2	9/A7.2		15.0	
116-03	3'-0"	7'-0"	1 3/4"	IHM	PNT	N	IHM	PNT	1	4/A7.3	3/A7.3	9/A7.1		2.0	
116-04	3'-0"	7'-0"	1 3/4"	HM	PNT	G	HM	PNT	2	14/A7.2	13/A7.2		45	9.0	
116-05	3'-0"	7'-0"	1 3/4"	IHM	PNT	N	IHM	PNT	1	4/A7.3	3/A7.3	9/A7.1		2.0	
116-06	16'-0"	16'-0"	3"	INSUL	PF	OHDL	-	-	1	1/A7.3	6/A7.2	9/A7.2		15.0	
116-07	16'-0"	16'-0"	3"	INSUL	PF	OHDL	-	-	1	1/A7.3	6/A7.2	9/A7.2		15.0	
117-01	3'-0"	7'-0"	1 3/4"	IHM	PNT	N	IHM	PNT	2	4/A7.1	3/A7.1		45	14.0	
117-02	16'-0"	16'-0"	1 1/2"	INSUL	PF	OHD	-	-	1	7/A7.2	6/A7.2	9/A7.2		15.0	
117-03	16'-0"	16'-0"	1 1/2"	INSUL	PF	OHD	-	-	1	7/A7.2	6/A7.2	9/A7.2		15.0	
117-04	3'-0"	7'-0"	1 3/4"	IHM	PNT	N	IHM	PNT	2	4/A7.1	3/A7.1		45	14.0	
117-05	3'-0"	7'-0"	1 3/4"	IHM	PNT	N	IHM	PNT	2	4/A7.1	3/A7.1		45	14.0	
117-06	16'-0"	16'-0"	1 1/2"	INSUL	PF	OHD	-	-	-	7/A7.2	6/A7.2	9/A7.2		15.0	
117-07	16'-0"	16'-0"	1 1/2"	INSUL	PF	OHD	-	-	-	7/A7.2	6/A7.2	9/A7.2		15.0	
117-08	3'-0"	7'-0"	1 3/4"	IHM	PNT	N	IHM	PNT	2	4/A7.1	3/A7.1		45	14.0	
118-01	3'-0"	7'-0"	1 3/4"	IHM	PNT	N	IHM	PNT	1	4/A7.3	3/A7.3	9/A7.1		2.0	
118-02	16'-0"	16'-0"	1 1/2"	INSUL	PF	OHD	-	-	-	1/A7.3	6/A7.2	9/A7.2		15.0	
118-03	16'-0"	16'-0"	1 1/2"	INSUL	PF	OHD	-	-	-	1/A7.3	6/A7.2	9/A7.2		15.0	
118-04	16'-0"	16'-0"	1 1/2"	INSUL	PF	OHD	-	-	-	1/A7.3	6/A7.2	9/A7.2		15.0	
118-05	3'-0"	7'-0"	1 3/4"	IHM	PNT	N	IHM	PNT	1	4/A7.3	3/A7.3	9/A7.1		2.0	
118-06	16'-0"	16'-0"	1 1/2"	INSUL	PF	OHD	-	-	-	1/A7.3	6/A7.2	9/A7.2		15.0	
118-07	16'-0"	16'-0"	1 1/2"	INSUL	PF	OHD	-	-	-	1/A7.3	6/A7.2	9/A7.2		15.0	
118-08	16'-0"	16'-0"	1 1/2"	INSUL	PF	OHD	-	-	-	1/A7.3	6/A7.2	9/A7.2		15.0	
T111-01	3'-0"	7'-0"	1 3/4"	HM	PNT	F	HM	PNT	1	8/A7.1	7/A7.1			12.0	
T112-01	3'-0"	7'-0"	1 3/4"	HM	PNT	F	HM	PNT	1	8/A7.1	7/A7.1			12.0	
T114-01	3'-0"	7'-0"	1 3/4"	HM	PNT	F	HM	PNT	1	12/A7.2	11/A7.2		45	11.0	
T115-01	3'-0"	7'-0"	1 3/4"	HM	PNT	F	HM	PNT	1	12/A7.2	11/A7.2		45	13.0	
AL=	ALUMINUM			HM=	HOLLOW METAL			PNT=	PAINT						
ALCW=	ALUMINUM CLAD WOOD			IHM=	INSULATED HOLLOW METAL			SCW=	SOLID CORE WOOD						
EXIST=	EXISTING			OHD=	OVERHEAD DOOR			STN=	STAIN						
FRP=	FIBER REINFORCED PLASTIC			PF=	PREFINISHED			WD=	WOOD						
															1



## PARTITION TYPE NOTES

- A. AT ALL FIRE RATED SEPARATIONS, EXTEND GYPSUM BOARD THROUGH ALL CHASES AND WALL INTERSECTIONS TO PROVIDE A CONTINUOUS UNINTERRUPTED LAYER OF 5/8" GYPSUM BOARD ON EACH SIDE OF THE PARTITION AND SEPARATION. SEAL ALL PENETRATIONS WITH APPROVED U.L. LISTED SEALANT AND/OR SEALANT ASSEMBLIES.
- B. AT ALL SMOKE SEPARATIONS, EXTEND GYPSUM BOARD THROUGH ALL CHASES AND WALL INTERSECTIONS TO PROVIDE A CONTINUOUS UNINTERRUPTED LAYER OF 5/8" GYPSUM BOARD ON EACH SIDE OF THE PARTITION AND SEPARATION. SEAL ALL PENETRATIONS WITH APPROVED U.L. LISTED SEALANT AND/OR SEALANT ASSEMBLIES TO LIMIT THE PASSAGE OF SMOKE.
- C. CONTROL JOINTS SHALL BE INSTALLED AT ALL CONSTRUCTION CHANGES WITHIN A PLANE OF PARTITION OR CEILING, AT PARTITION RUNS THAT EXCEED 30'-0" IN LENGTH, CEILING DIMENSIONS THAT EXCEED 50' IN EITHER DIRECTION WITH PERIMETER RELIEF AND 30' WITHOUT, AT ANGLE OF 1", 10" AND 11" SHAPED CEILING AREAS, AT BUILDING EXPANSION OR CONTROL JOINTS. CONTROL JOINTS SHALL BE INSTALLED AT EACH DOOR FROM OUTSIDE CORNER OF THE TOP OF DOOR JAMB TO ABOVE CEILING. REFER TO PUBLISHED CONTROL JOINT DETAILS IN AIA 600-900 FIRE RESISTANCE DESIGN MANUAL.
- D. CONTRACTOR SHALL PROVIDE ADDITIONAL MATERIALS TO MAINTAIN THE APPROPRIATE FIRE RATING WHERE CONTROL JOINTS ARE LOCATED IN FIRE-RATED PARTITIONS. INSTALLATION SHALL BE PER THE DETAILS SHOWN IN THE LATEST PUBLICATION OF THE USG CONSTRUCTION HANDBOOK, GYPSUM ASSOCIATION PUBLICATION OR UNDERWRITERS LABORATORY FIRE RESISTANCE DIRECTORY AND AS APPROVED BY THE AUTHORITY HAVING JURISDICTION.
- E. AT U.L. LISTED RATED ASSEMBLIES, THE CONTRACTOR IS TO VERIFY THE GYPSUM BOARD TYPE AND MANUFACTURER BASED ON THE WRITTEN DESCRIPTIONS FOR THE APPROPRIATE U.L. LISTED ASSEMBLY RATING SPECIFICATIONS FOUND IN THE LATEST EDITION OF THE UNDERWRITERS LABORATORY FIRE RESISTANCE DIRECTORY.
- F. AT THE BASE AND HEAD OF ALL WALLS REQUIRING SOUND ATTENUATION INSULATION, ENSURE THAT THE GYPSUM WALL PANELS ARE NOT OFFSET FROM THE SUBFLOOR OR THE STRUCTURE ABOVE MORE THAN 1/2". IF CONSTRUCTION CONDITIONS REQUIRE THAT THE GYPSUM WALL PANELS TO BE OFFSET MORE THAN 1/2" PROVIDE A CONTINUOUS BEAD OF BACKER ROD AND SEALANT TO PREVENT THE WALL BASE FROM DEFLECTING INTO THE CAVITY.
- G. AT THE BASE OF ALL WALLS NOT REQUIRING SOUND ATTENUATION INSULATION, ENSURE THAT THE GYPSUM BOARD WALL PANELS ARE NOT OFFSET FROM THE SUBFLOOR TO GREATER THAN 1/2". IF CONSTRUCTION CONDITIONS REQUIRE THE GYPSUM BOARD WALL PANELS TO BE INSTALLED WITH AN OFFSET GREATER THAN 1/2", PROVIDE A CONTINUOUS BEAD OF BACKER ROD AND SEALANT TO PREVENT THE WALL BASE FROM DEFLECTING INTO THE CAVITY.
- H. PROVIDE RED ROSIN PAPER OR SIMILAR MATERIAL BETWEEN DISSIMILAR MATERIALS
- I. PROVIDE 5/8" FIRE RATED MOISTURE RESISTANT/MOLD RESISTANT GYPSUM BOARD AT ALL LOCATIONS WHERE WATER PRODUCING DEVICES MAY BE PRESENT OR SLASHED ONTO THE WALL SURFACE (I.E. WATER COOLERS, SINKS, LAVATORIES, HOSE BIBS, ETC.). EXTEND GYPSUM BOARD A MINIMUM OF 4'-0" IN ALL DIRECTIONS FROM CENTER OF DEVICE.
- J. EXTEND FIRE RATED PARTITIONS, BARRIERS AND OTHER SEPARATIONS TO BOTTOM OF ROOF DECK ABOVE AND TO EXTERIOR WALL. EXTEND GYPSUM BOARD TO FURTHER EXTENT POSSIBLE AND AS APPROVED BY THE AUTHORITY HAVING JURISDICTION.
- K. PROVIDE CONTINUOUS STIFFENER CHANNELS AT 4'-0" MAXIMUM VERTICAL SPACING, TYPICAL. ALSO PROVIDE AT MIDPOINT BETWEEN BOTTOM OF STRUCTURE AND HEAD OF INTERIOR WINDOWS AND DOORS AS WELL AS HINGE MIDPOINT AT DOORS. IF DOOR OPENING IS OVER 4'-0" LONG, PROVIDE STIFFENER CHANNELS AT ALL HINGE POINTS FOR MINIMUM OF 2 STUD SPACES HORIZONTALLY.
- L. AT ALL INTERSECTIONS WITH CEILINGS, PROVIDE METAL STUD FIRE BLOCKING AT NO GREATER THAN 8'-0" APART AND AS REQUIRED BY THE FIRE RATED ASSEMBLY.
- M. PROVIDE TILE BACKER BOARD AT AREAS TO RECEIVE TILE FINISH.
- N. ON FIRE WALLS, FIRE BARRIERS, FIRE PARTITIONS, SMOKE BARRIERS, AND SMOKE PARTITIONS OR ANY OTHER WALL REQUIREMENTS TO HAVE PROTECTED OPENINGS OR PENETRATIONS, PROVIDE EFFECTIVE AND PERMANENT IDENTIFICATION WITH SIGNS OR STENCILING AS REQUIRED BY CODE.



**Farnsworth**  
GROUP

2211 W. BRADLEY AVENUE  
CHAMPAIGN, ILLINOIS 61821  
(217) 352-7408 / [info@f-w.com](mailto:info@f-w.com)

www.f-w.com  
Engineers | Architects | Surveyors | Scientists

ISSUE:		
#	DATE:	DESCRIPTION:
1	04/22/2022	ADDENDUM 1
2	04/25/2022	ADDENDUM 2

**100% Permit & Bid Set**  
04/06/2022

PROJECT:  
Crawford County Highway  
Department (CCHD)

## Shop & Office

10312 N 900th Street  
Robinson, IL 62454

DATE: 04/06/2022

DESIGNED: SCB/PNM

DRAWN: PNM

REVIEWED: SCE

SHEET TITLE

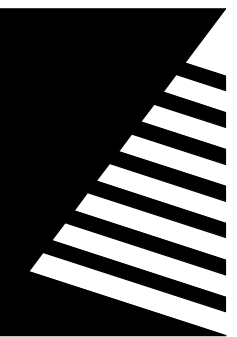
## PARTITION TYPES, DOOR SCHEDULE, ELEVATIONS AND DETAILS

SHEET NUMBER

## A7.1

PROJECT NO.: 0210855.00





Farnsworth  
GROUP

2211 W. BRADLEY AVENUE  
CHAMPAIGN, ILLINOIS 61821  
(217) 352-7408 / info@f-w.com

www.f-w.com  
Engineers | Architects | Surveyors | Scientists

ISSUE:  
# DATE: DESCRIPTION:  
1 04/25/2022 ADDENDUM 2

100% Permit & Bid Set  
04/06/2022

PROJECT:  
Crawford County Highway  
Department (CCHD)

Shop & Office

10312 N 900th Street  
Robinson, IL 62454

DATE: 04/06/2022  
DESIGNED: SCB/PNM  
DRAWN: PNM/OS/AMW  
REVIEWED: SCB

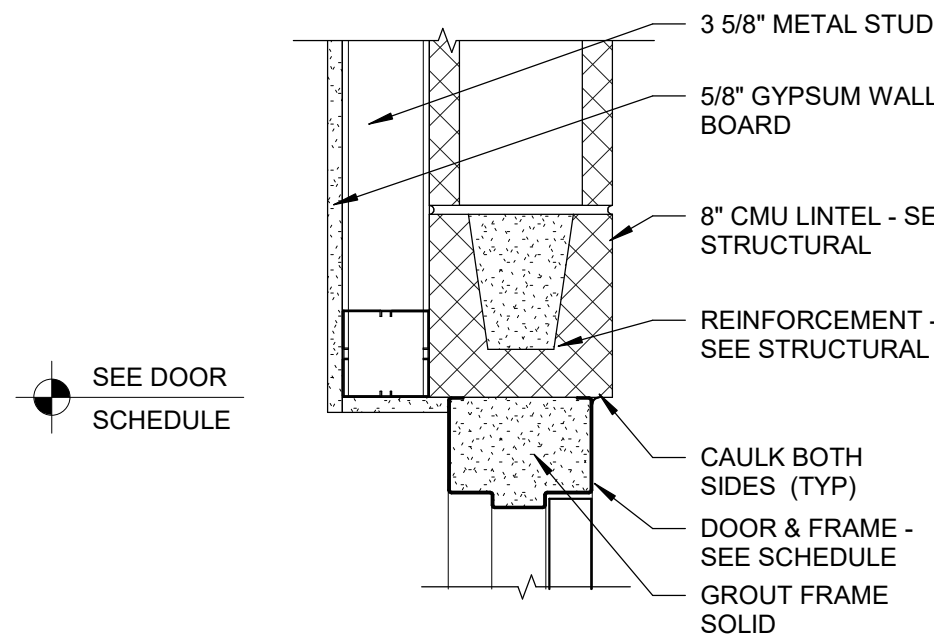
SHEET TITLE:

DOOR AND WINDOW  
DETAILS

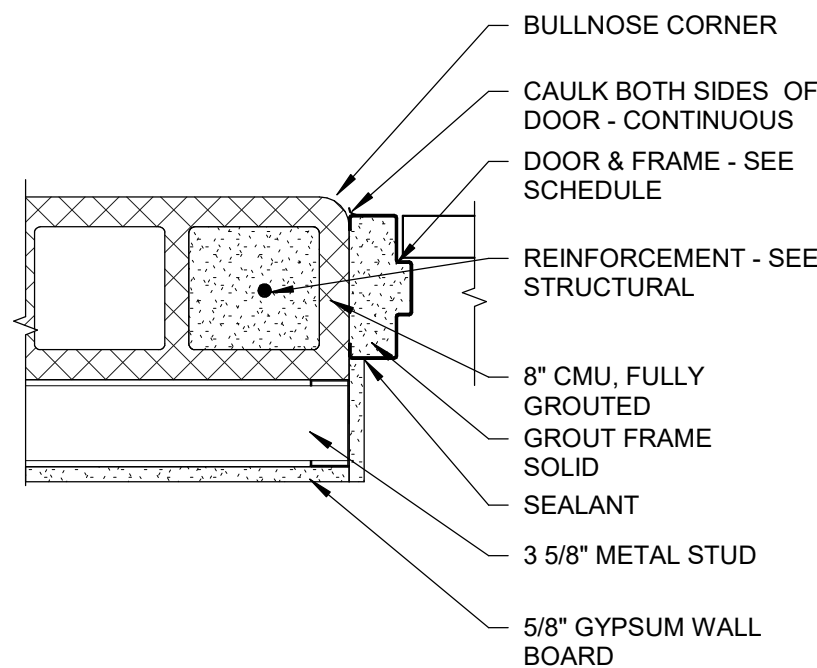
SHEET NUMBER:

A7.2

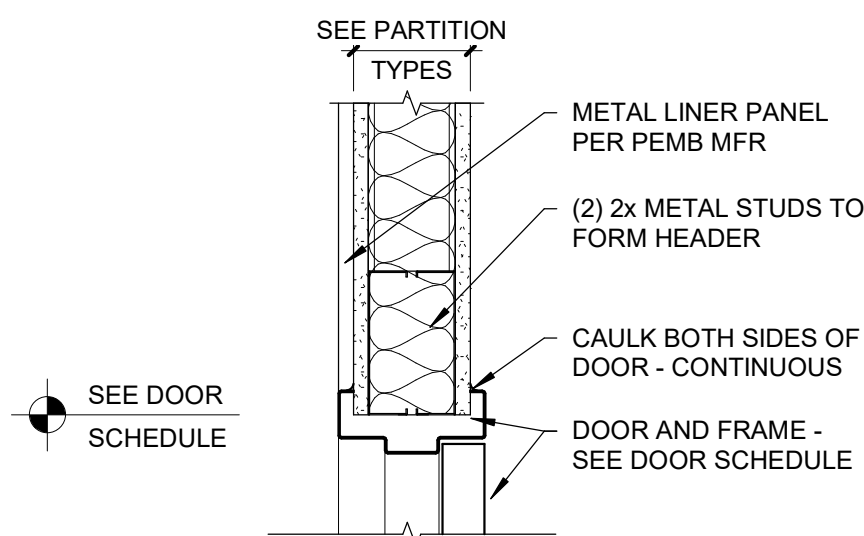
PROJECT NO.: 0210855.00



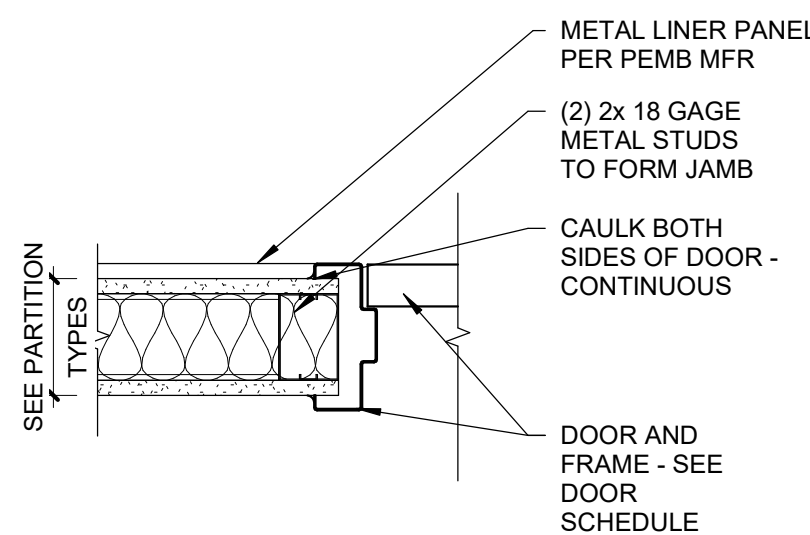
14 HEAD DETAIL @ CMU FURRING  
SCALE: 1 1/2" = 1'-0"



13 JAMB DETAIL @ CMU FURRING  
SCALE: 1 1/2" = 1'-0"

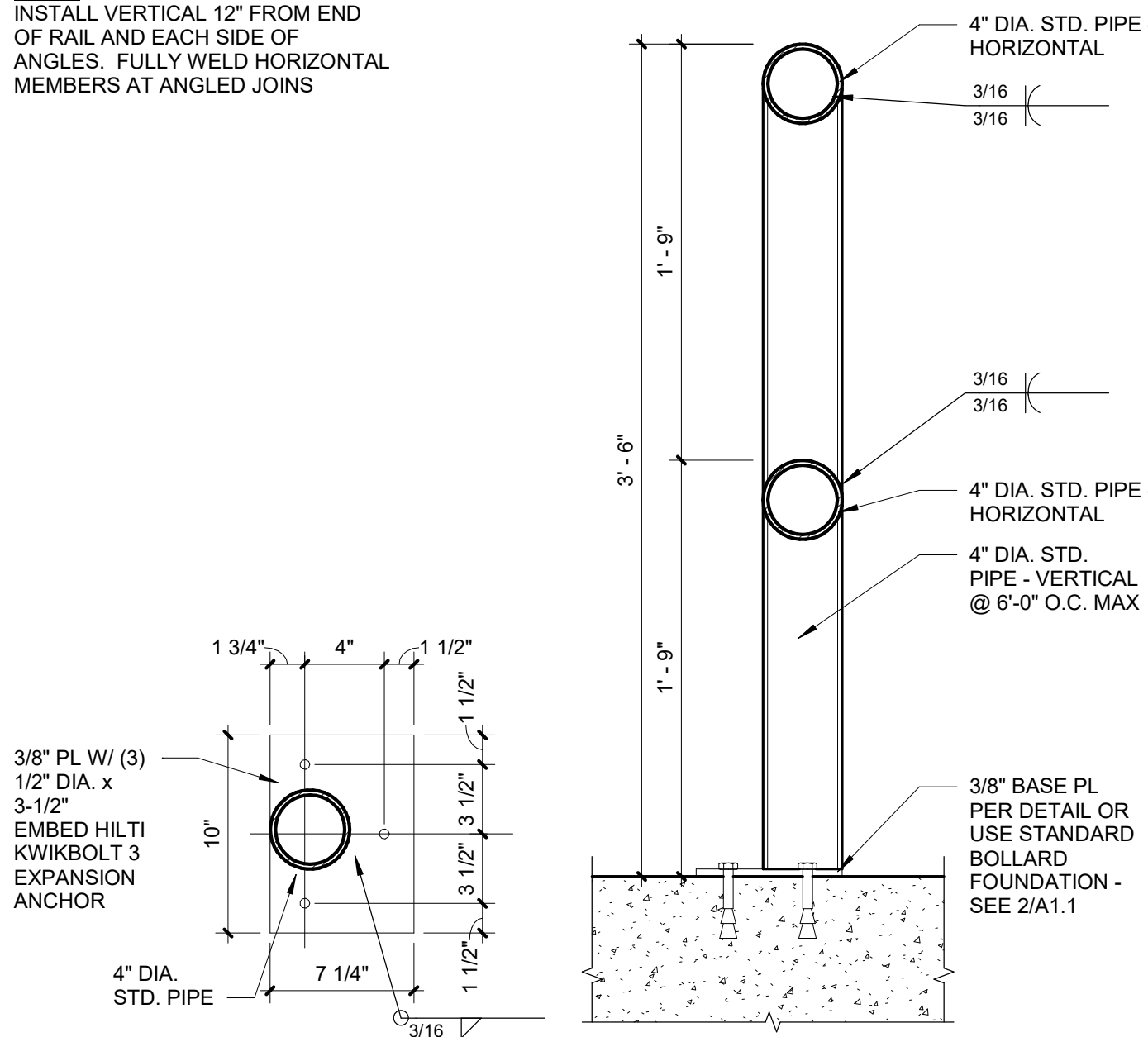


12 HEAD DETAIL @ METAL STUD W/ LINER PANEL  
SCALE: 1 1/2" = 1'-0"

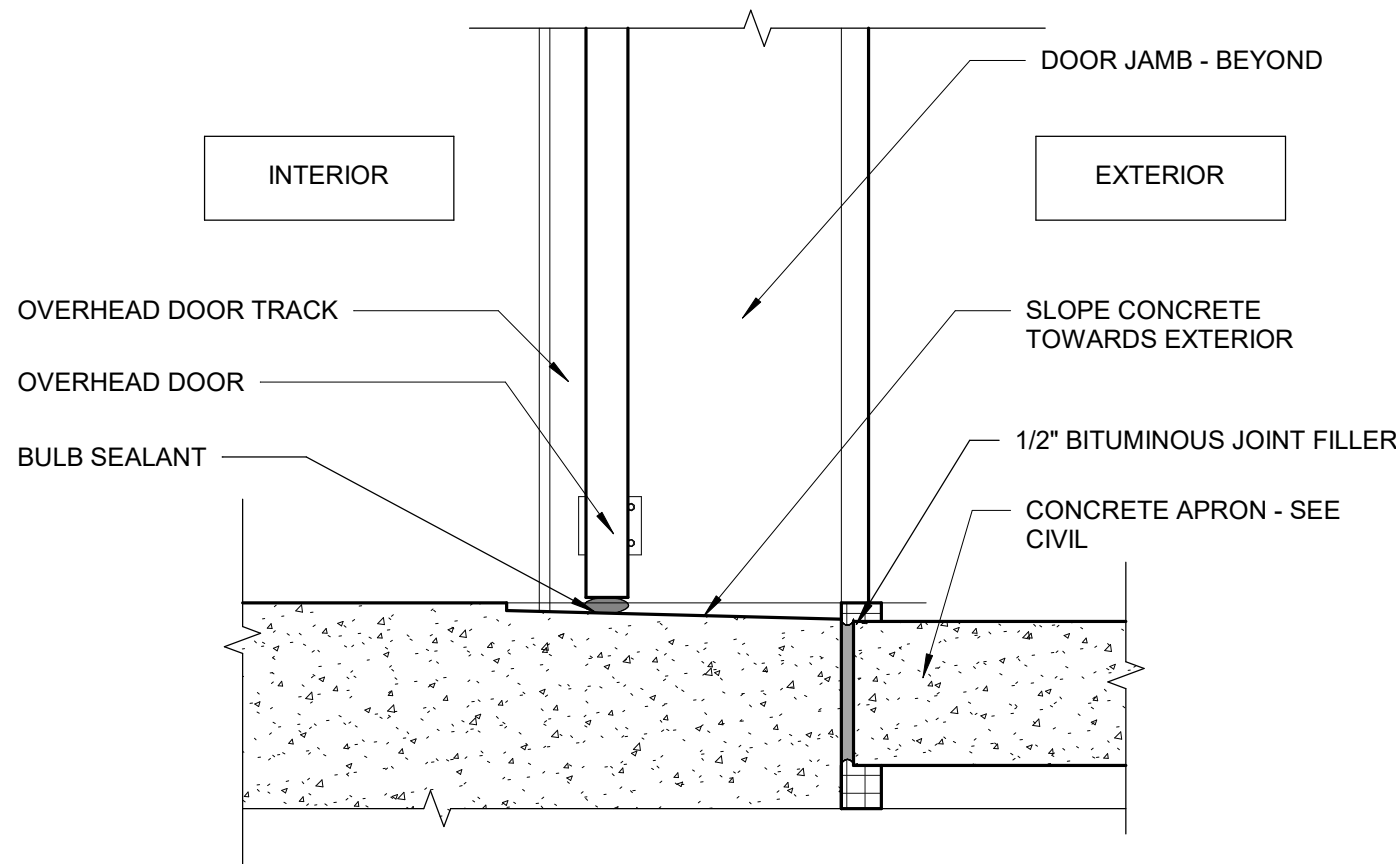


11 JAMB DETAIL @ METAL STUD W/ LINER PANEL  
SCALE: 1 1/2" = 1'-0"

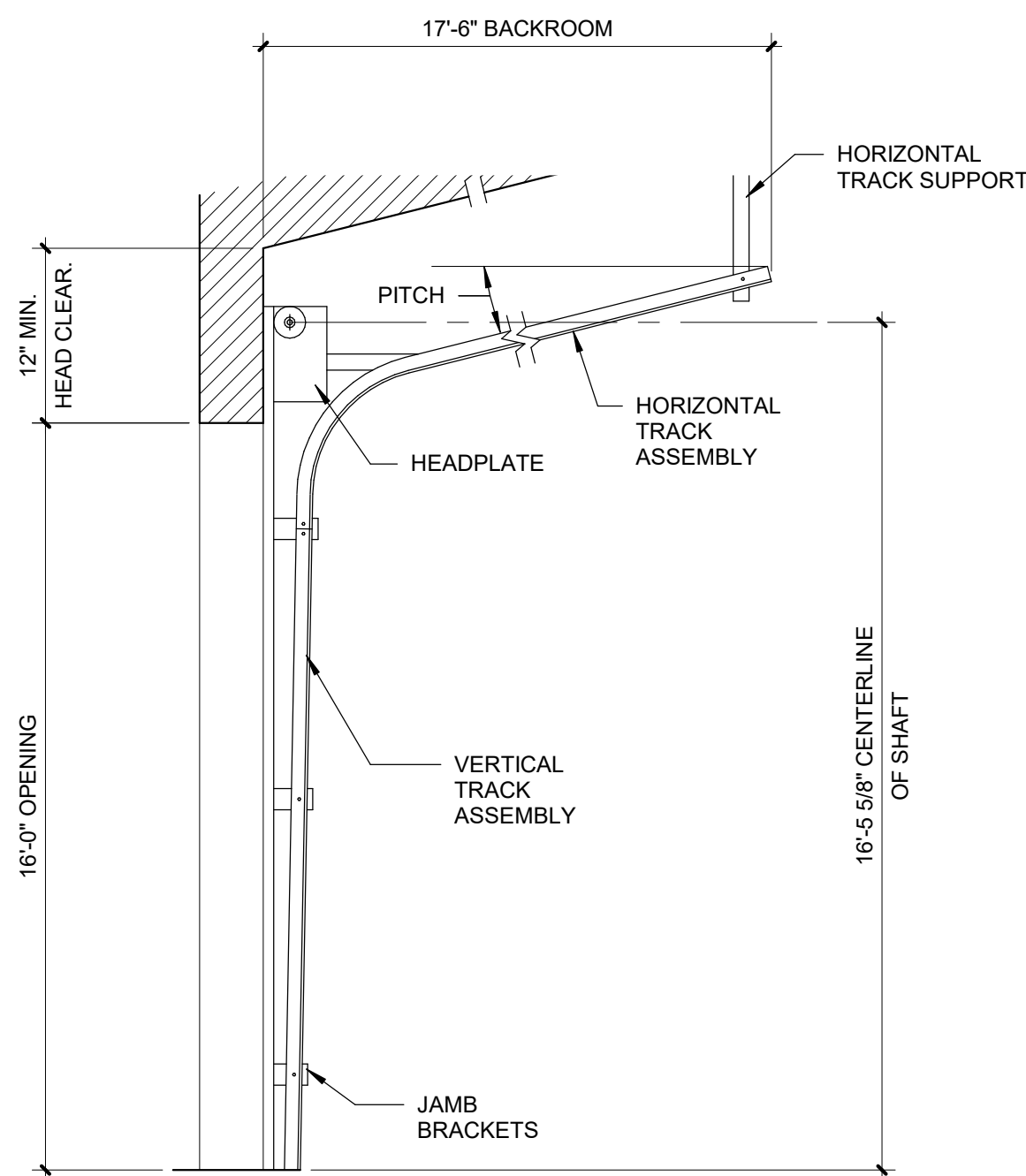
NOTE:  
INSTALL VERTICAL 12" FROM END  
OF RAIL AND EACH SIDE OF  
ANGLES. FULLY WELD HORIZONTAL  
MEMBERS AT ANGLED JOINS



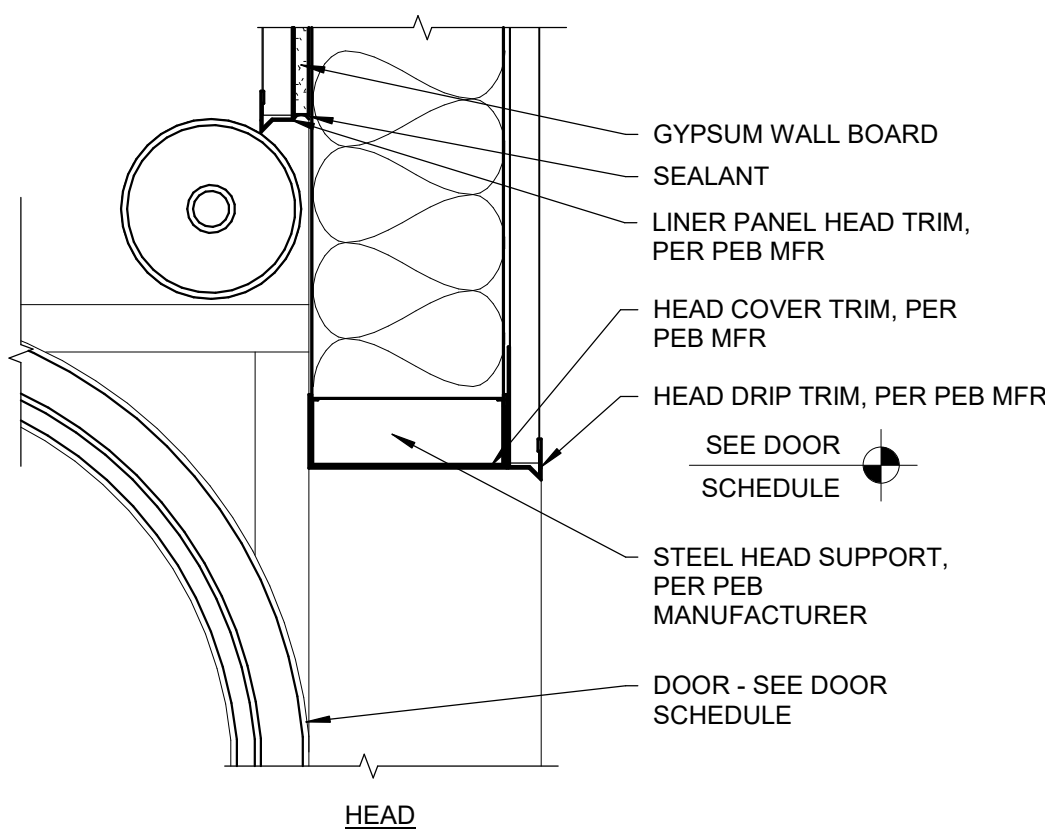
10 COLLISION GUARDRAIL DETAIL  
SCALE: 1 1/2" = 1'-0"



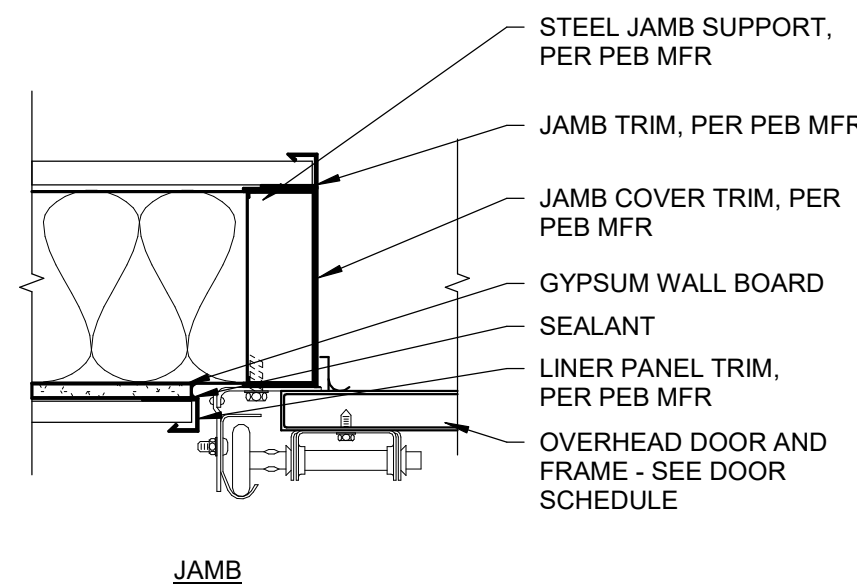
9 OVERHEAD DOOR - THRESHOLD  
SCALE: 1 1/2" = 1'-0"



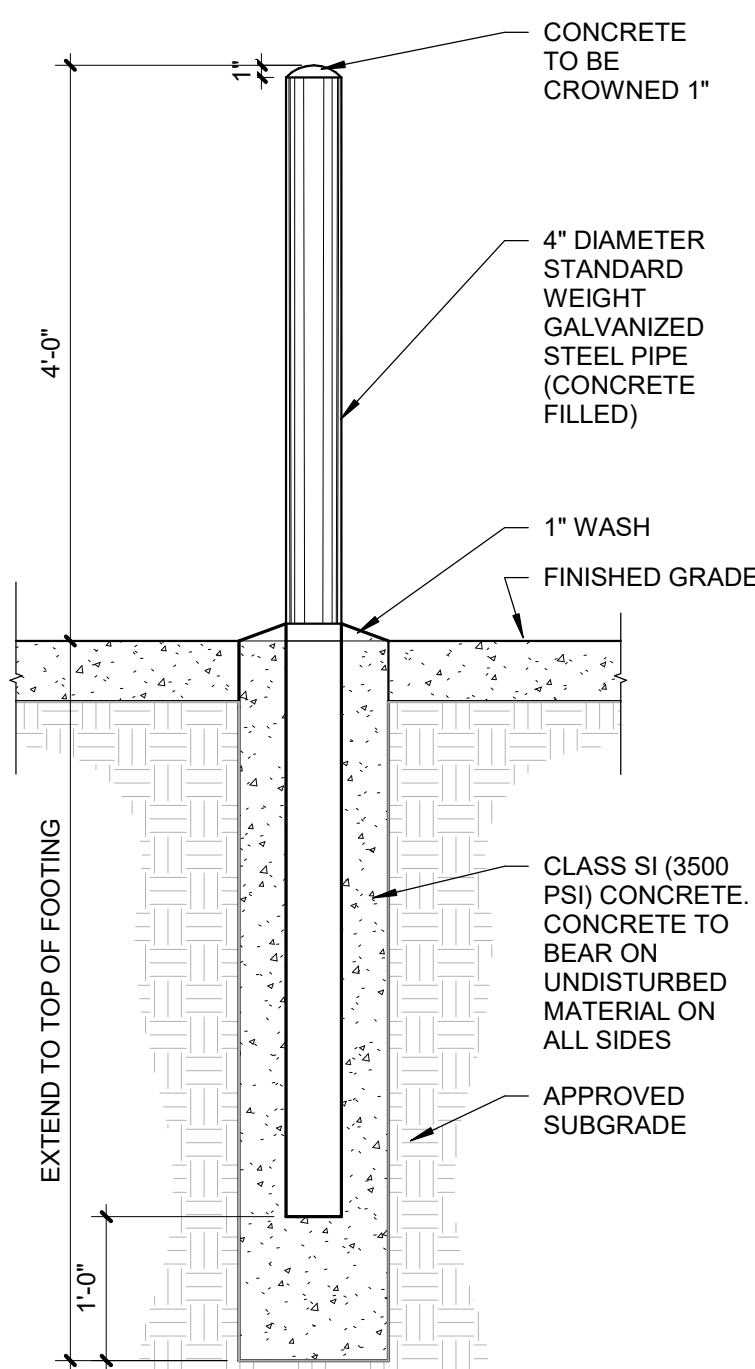
8 OVERHEAD DOOR TRACK DETAIL  
SCALE: 3/4" = 1'-0"



7 SECTIONAL DOOR HEAD DETAIL  
W/LINER PANEL  
SCALE: 1 1/2" = 1'-0"

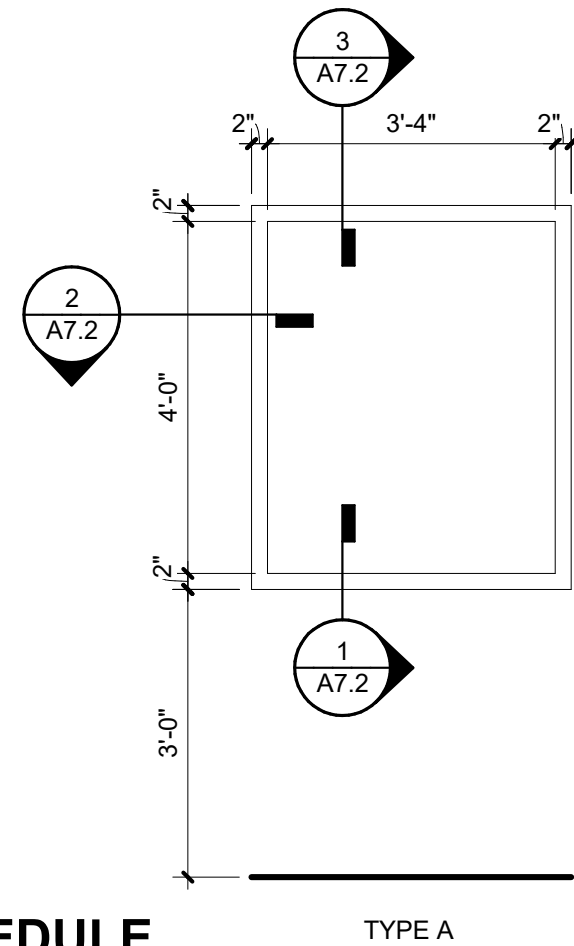


6 SECTIONAL DOOR JAMB DETAIL  
W/LINER PANEL  
SCALE: 1 1/2" = 1'-0"

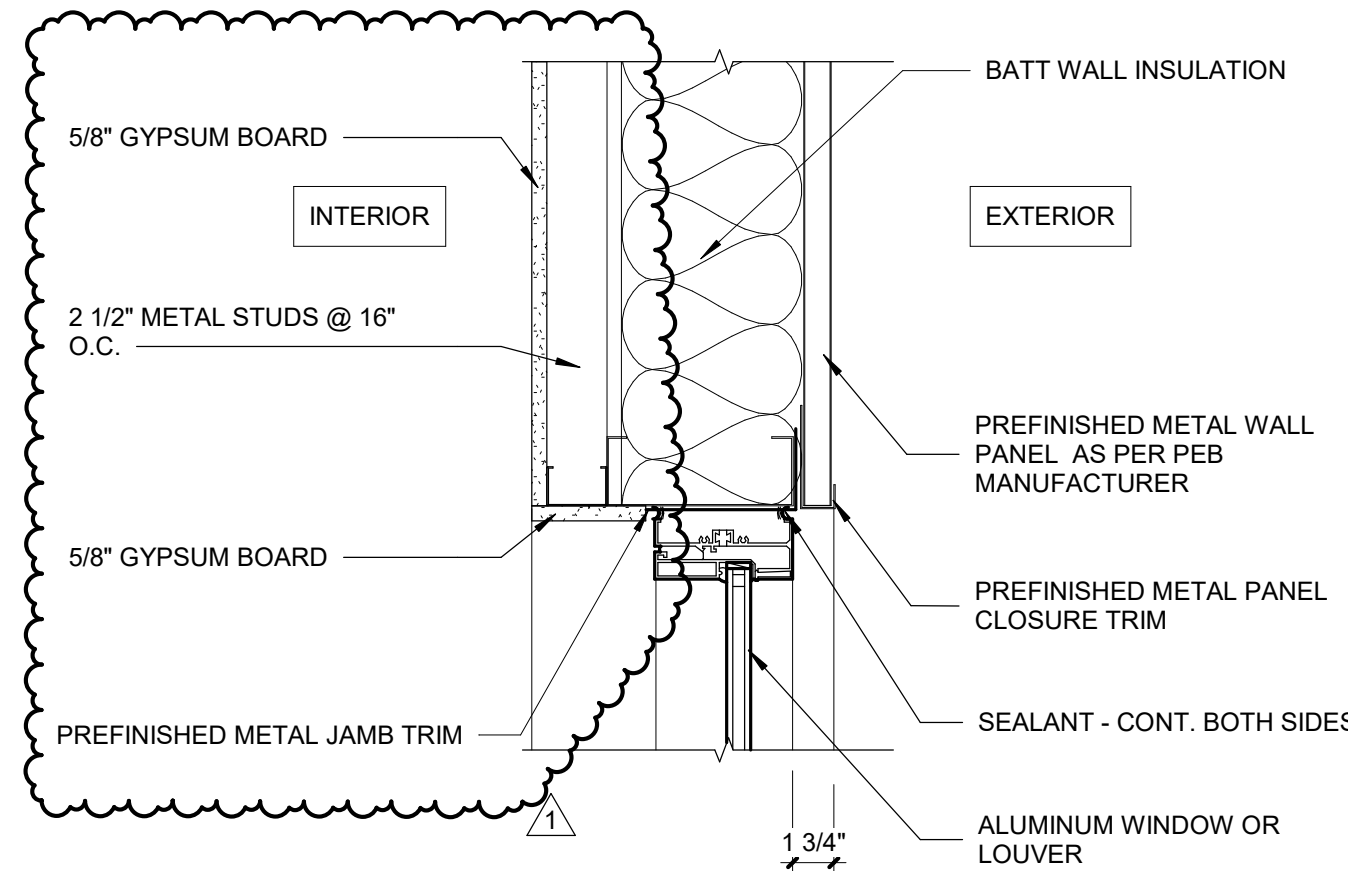


NOTES:  
COLOR OF BOLLARD SHALL BE YELLOW AND SHALL  
BE PAINTED AS FOLLOWS:  
A. SOLVENT CLEAN TO REMOVE OIL, GREASE AND  
OTHER CONTAMINANTS.  
B. APPLY METAL PRIMER FOR GALVANIZED  
SURFACES.  
C. APPLY TWO FINISH COATS OF APPROVE EXTERIOR  
PAINT FOR METAL SURFACES.

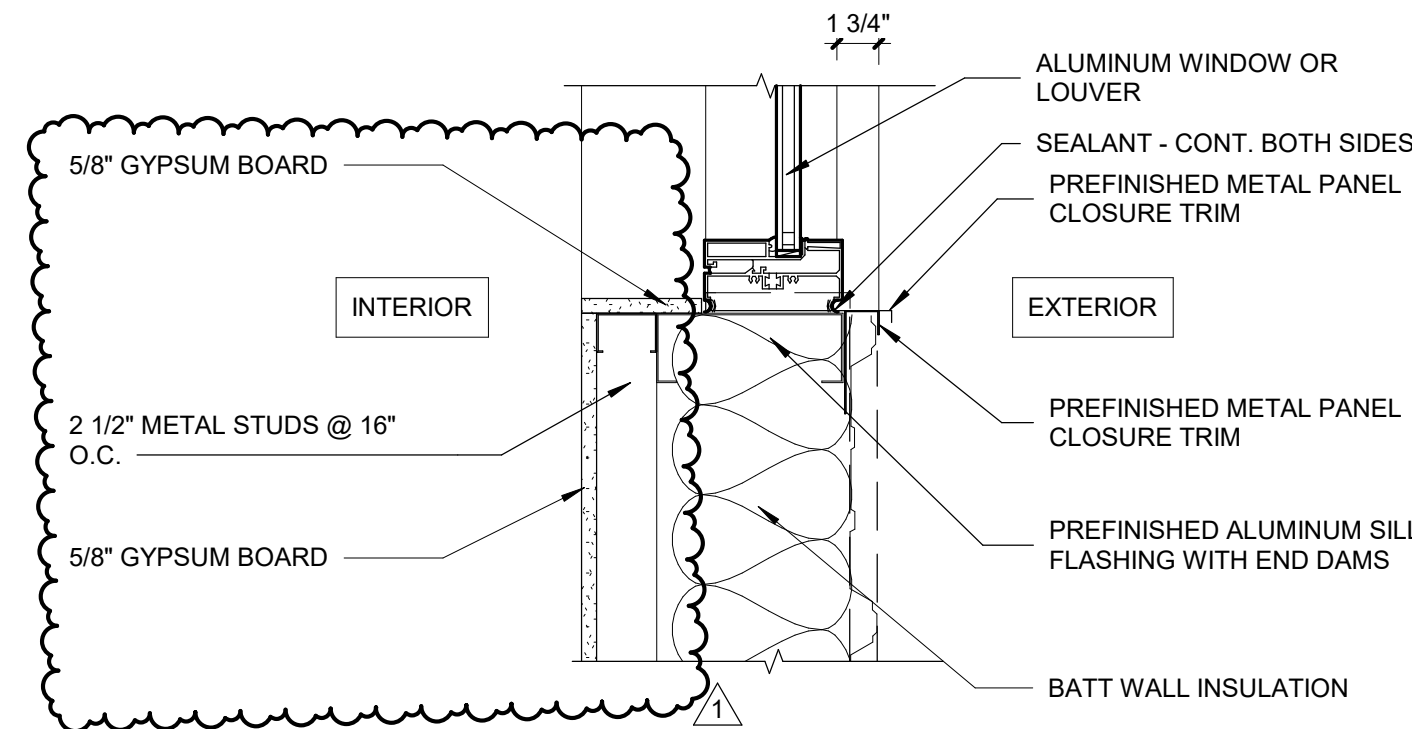
5 BOLLARD DETAIL  
SCALE: 3/4" = 1'-0"



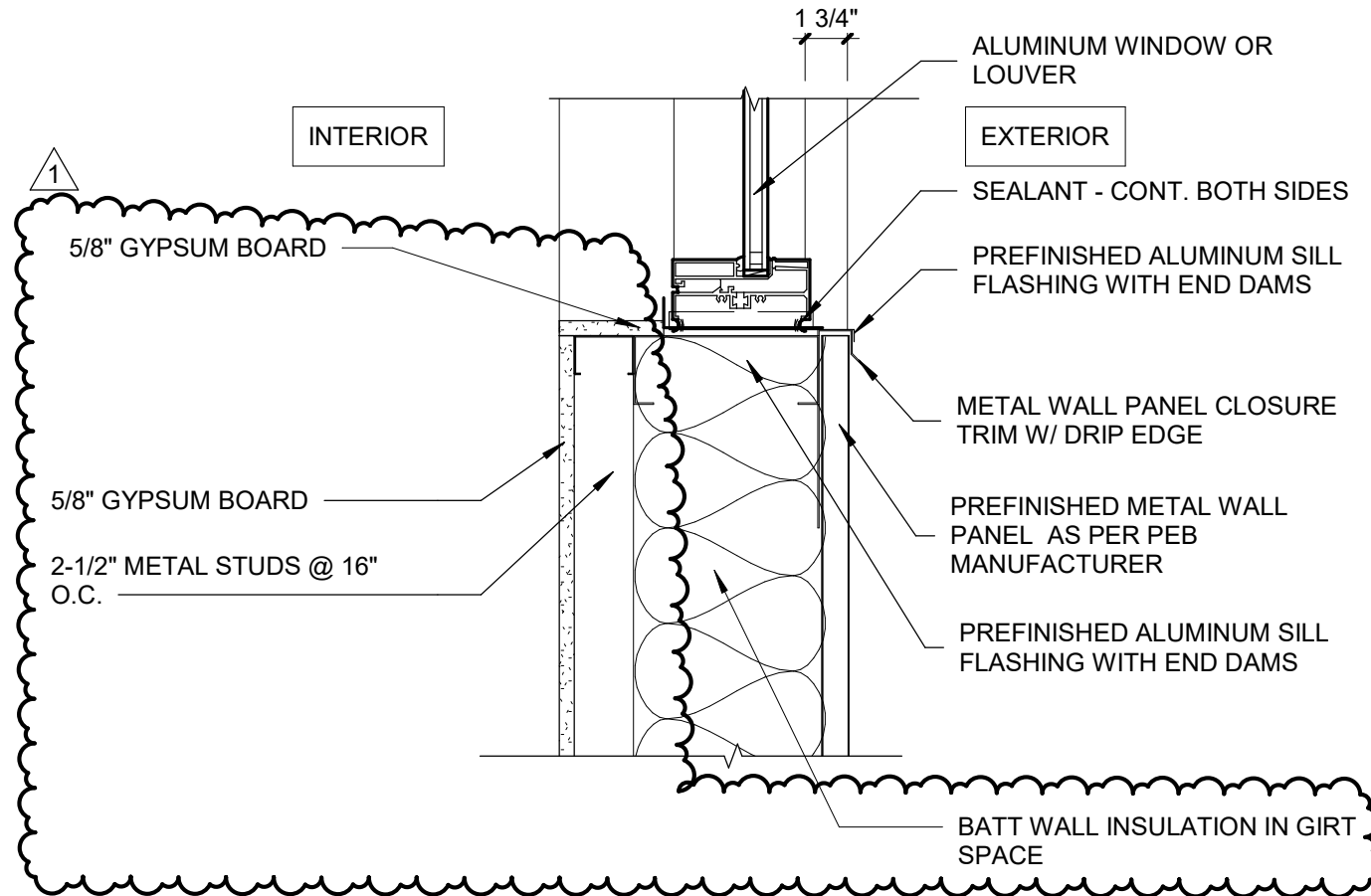
4 WINDOW SCHEDULE  
SCALE: 1/2" = 1'-0"



3 WINDOW/LOUVER - HEAD DETAIL  
SCALE: 1 1/2" = 1'-0"

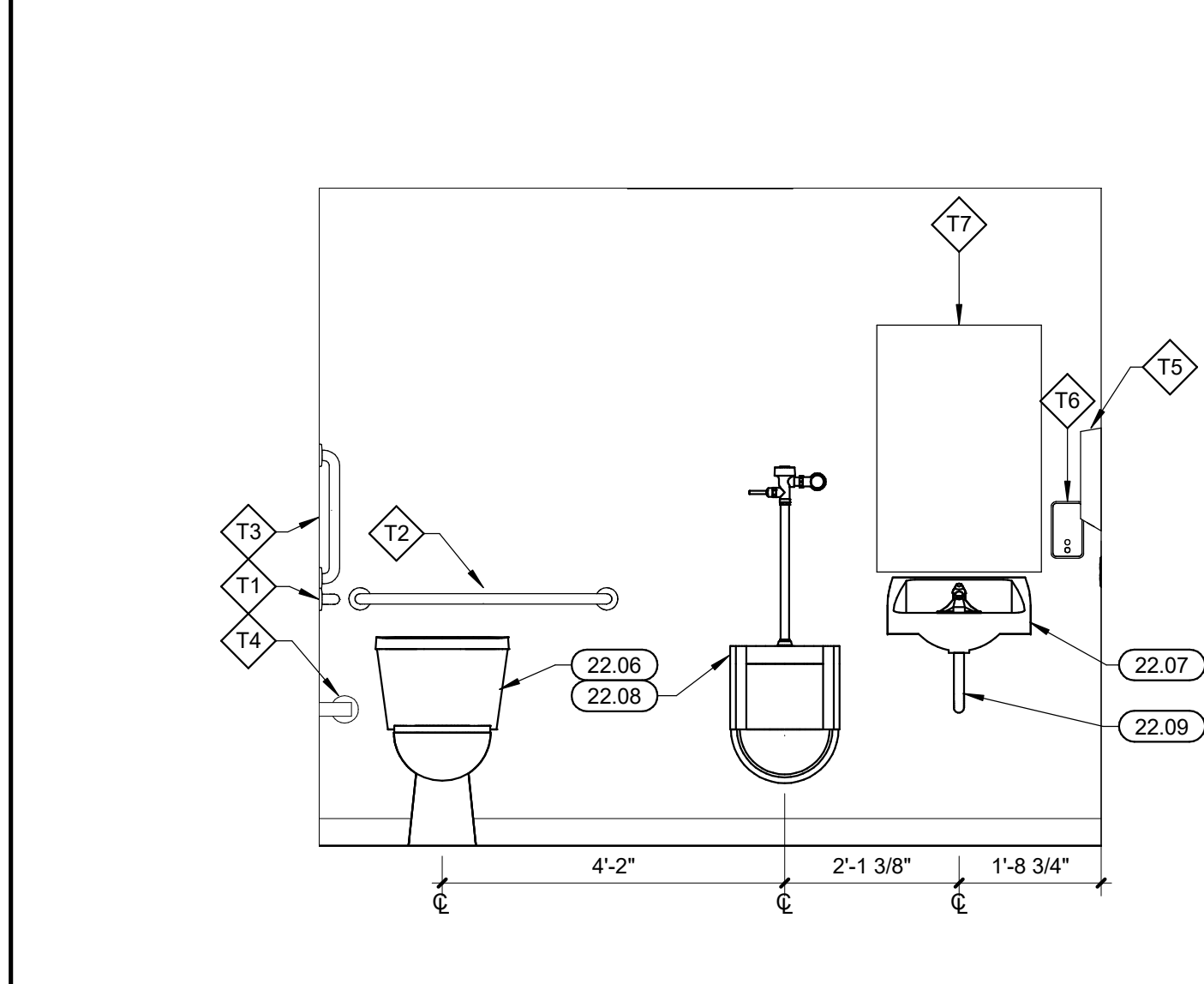


2 WINDOW/LOUVER - JAMB DETAIL  
SCALE: 1 1/2" = 1'-0"

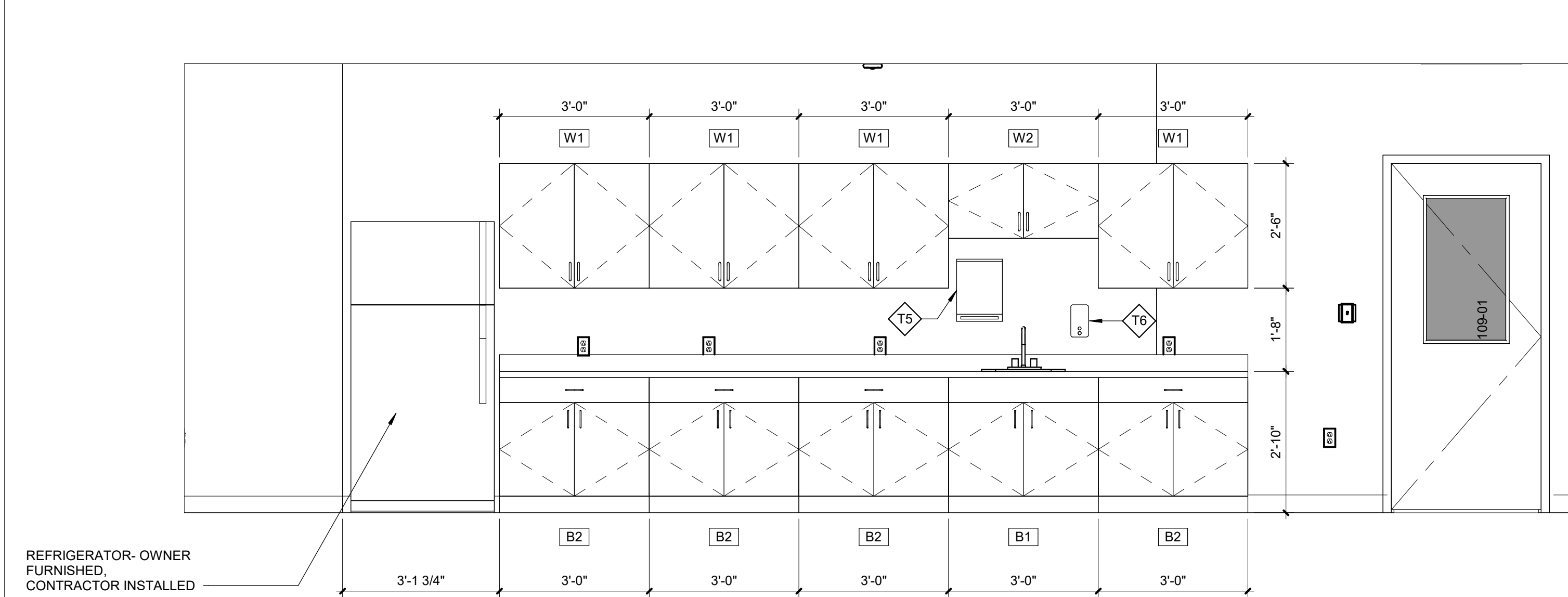


1 WINDOW/LOUVER - SILL DETAIL  
SCALE: 1 1/2" = 1'-0"

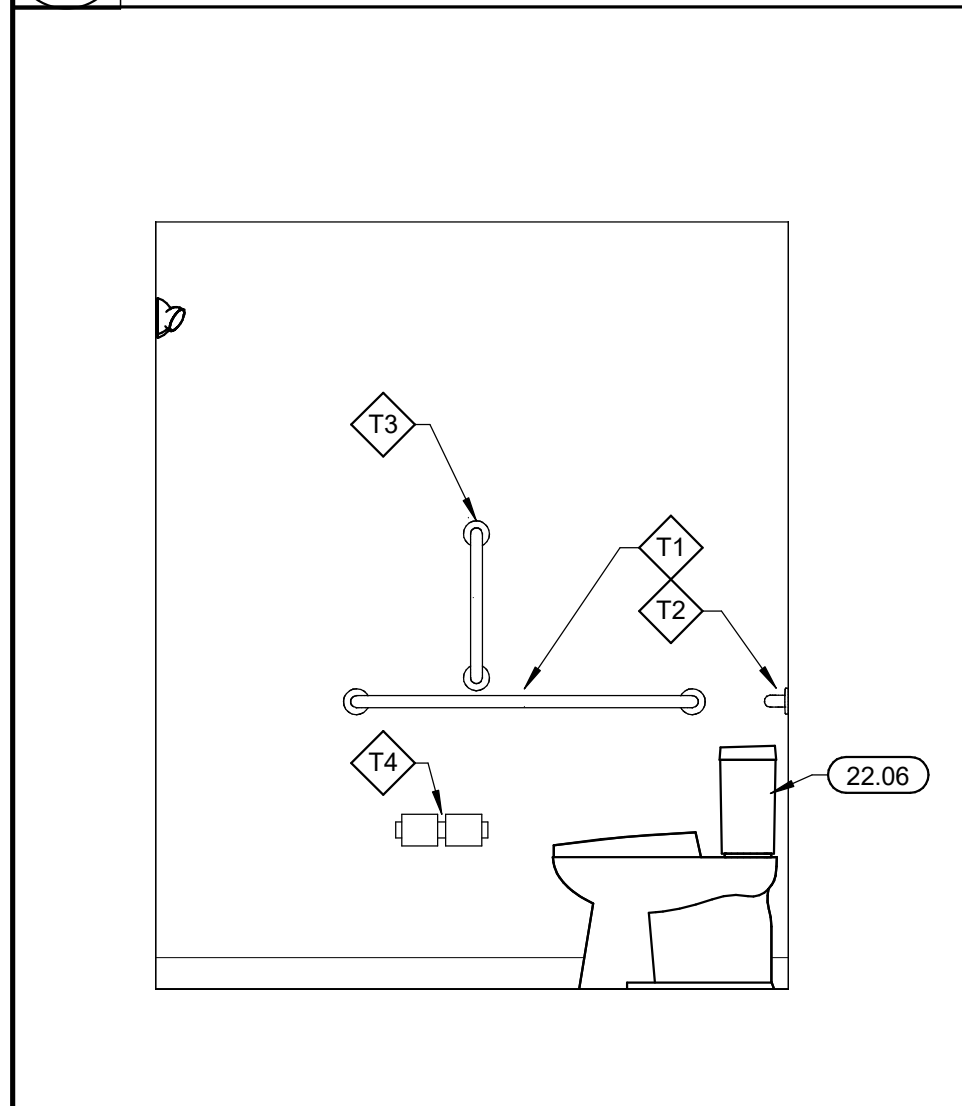
4/25/2022, 3:02:01 PM



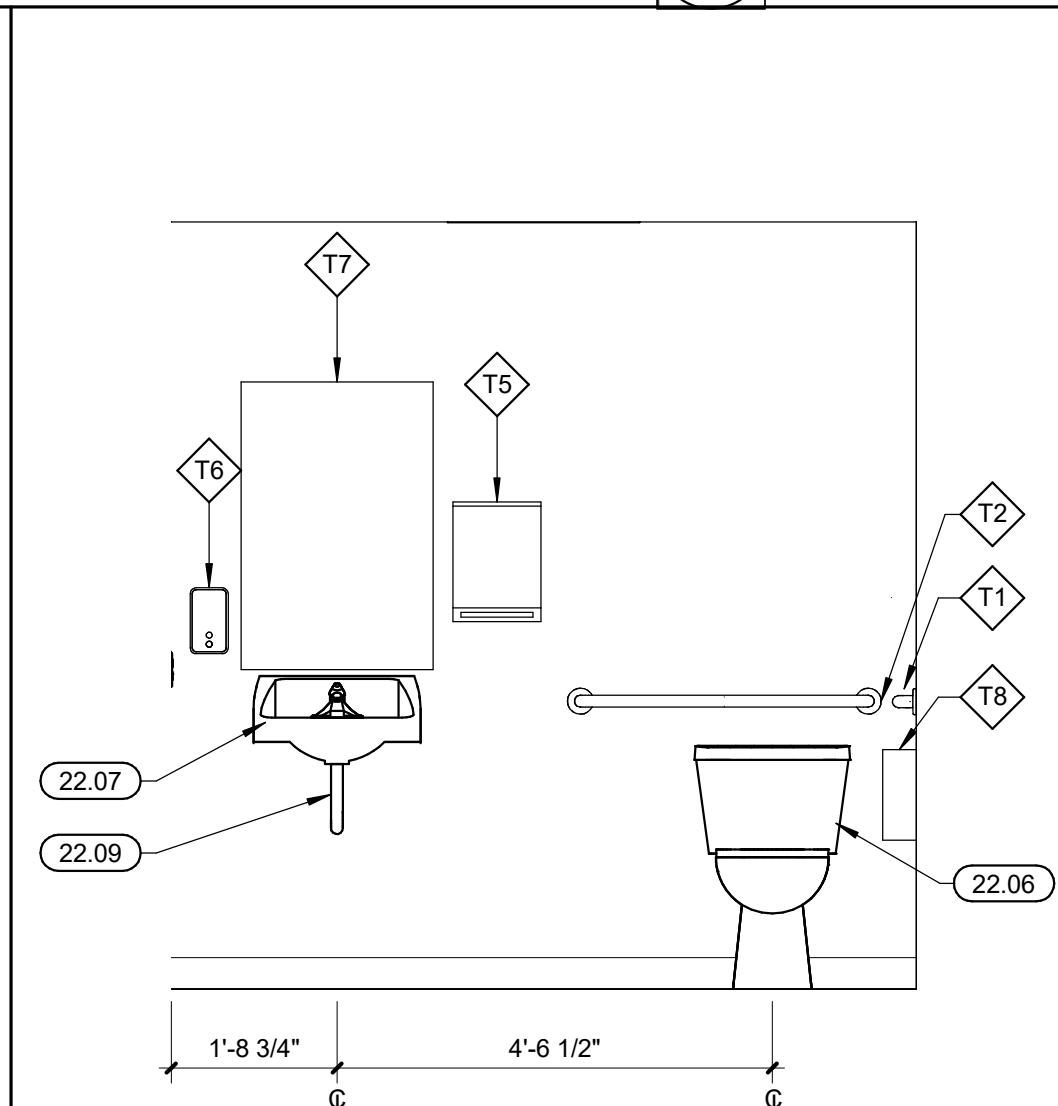
8 T111 MEN'S RESTROOM WEST ELEVATION  
SCALE: 1/2" = 1'-0"



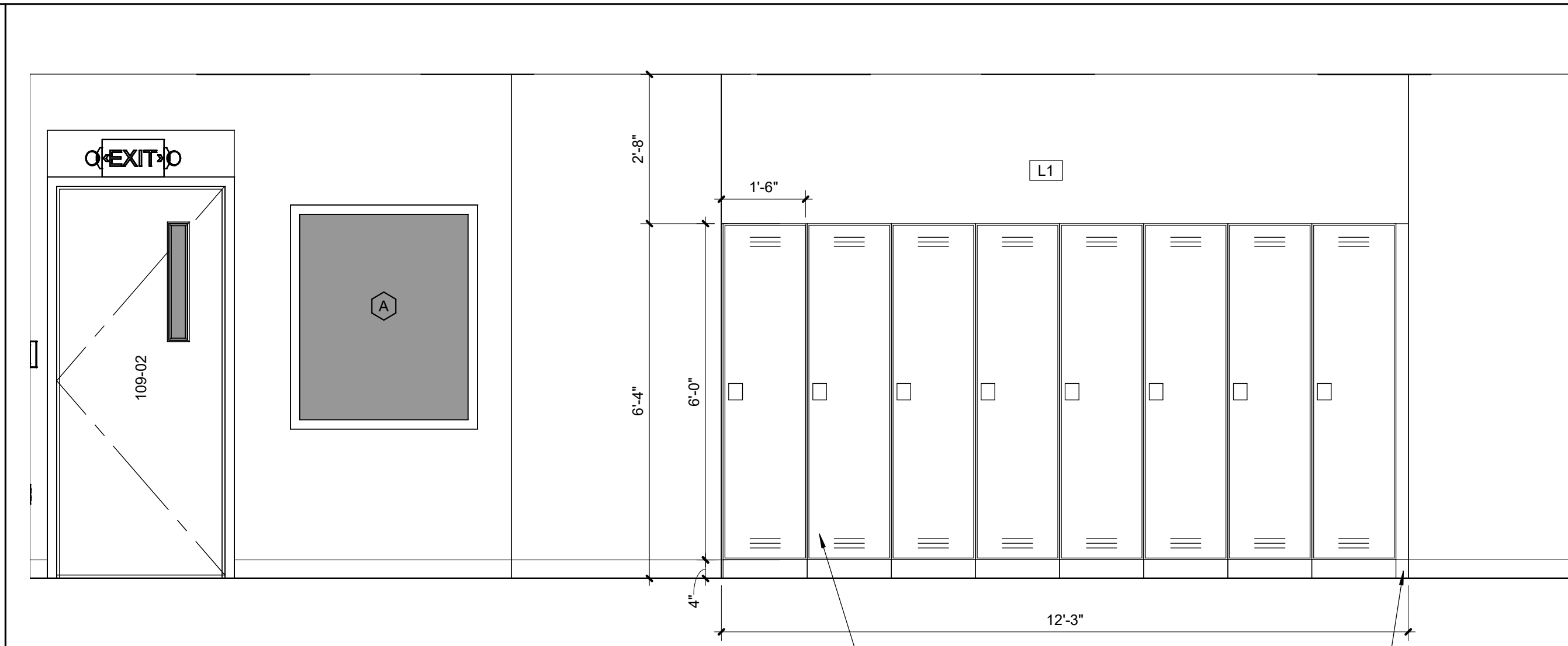
3 109 BREAK ROOM EAST ELEVATION  
SCALE: 1/2" = 1'-0"



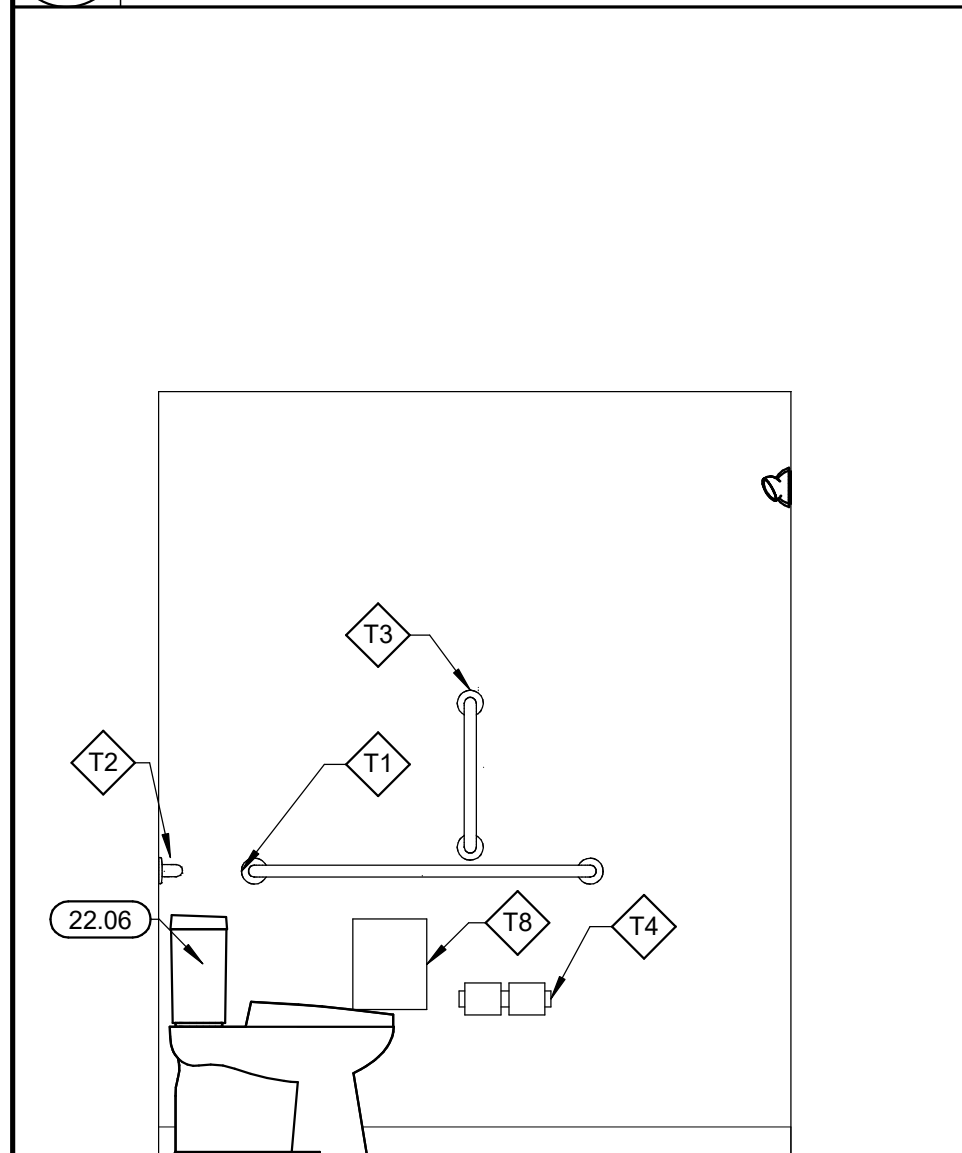
7 T111 MEN'S RESTROOM SOUTH ELEVATION  
SCALE: 1/2" = 1'-0"



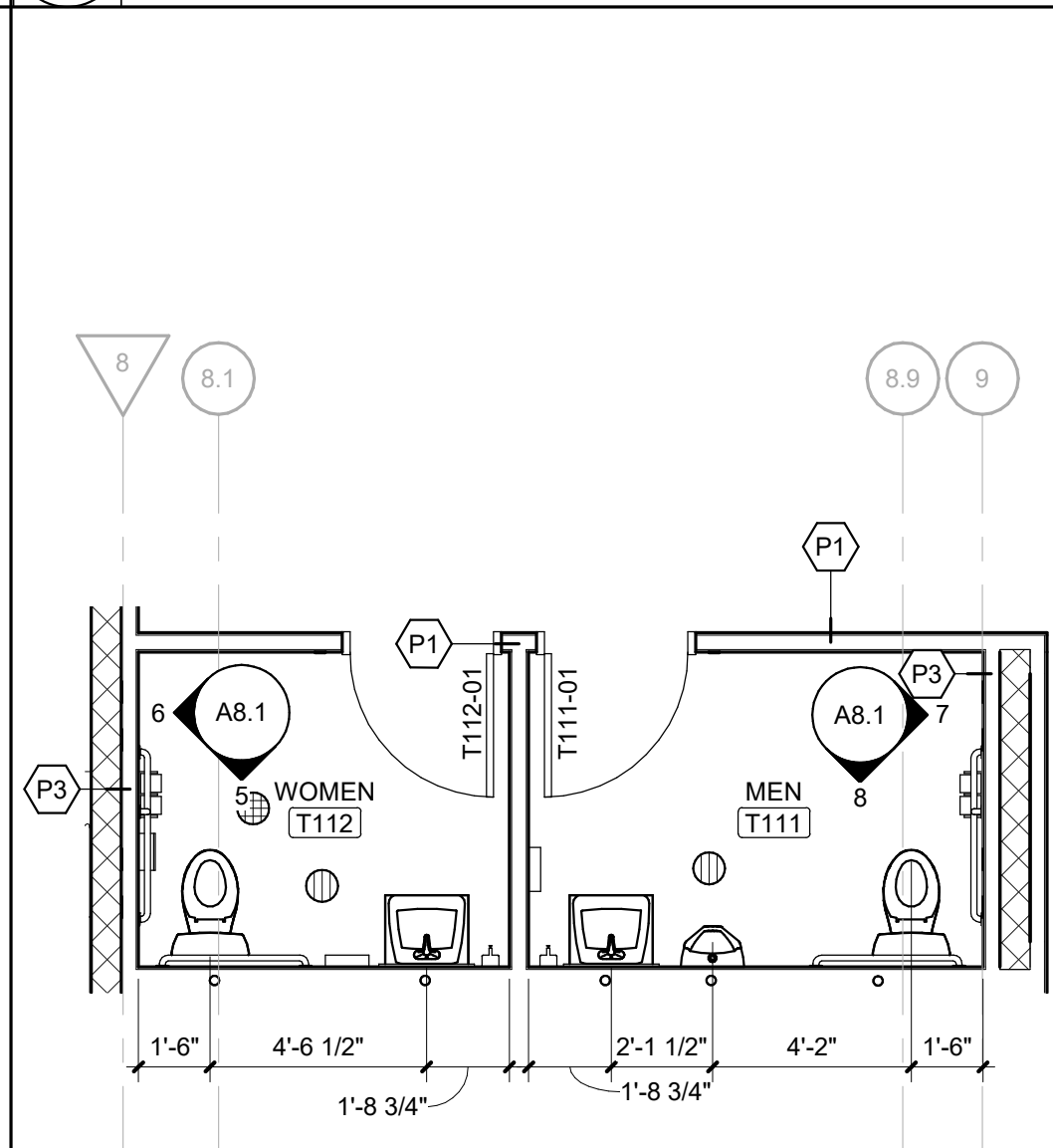
5 T112 WOMEN'S RESTROOM WEST ELEVATION  
SCALE: 1/2" = 1'-0"



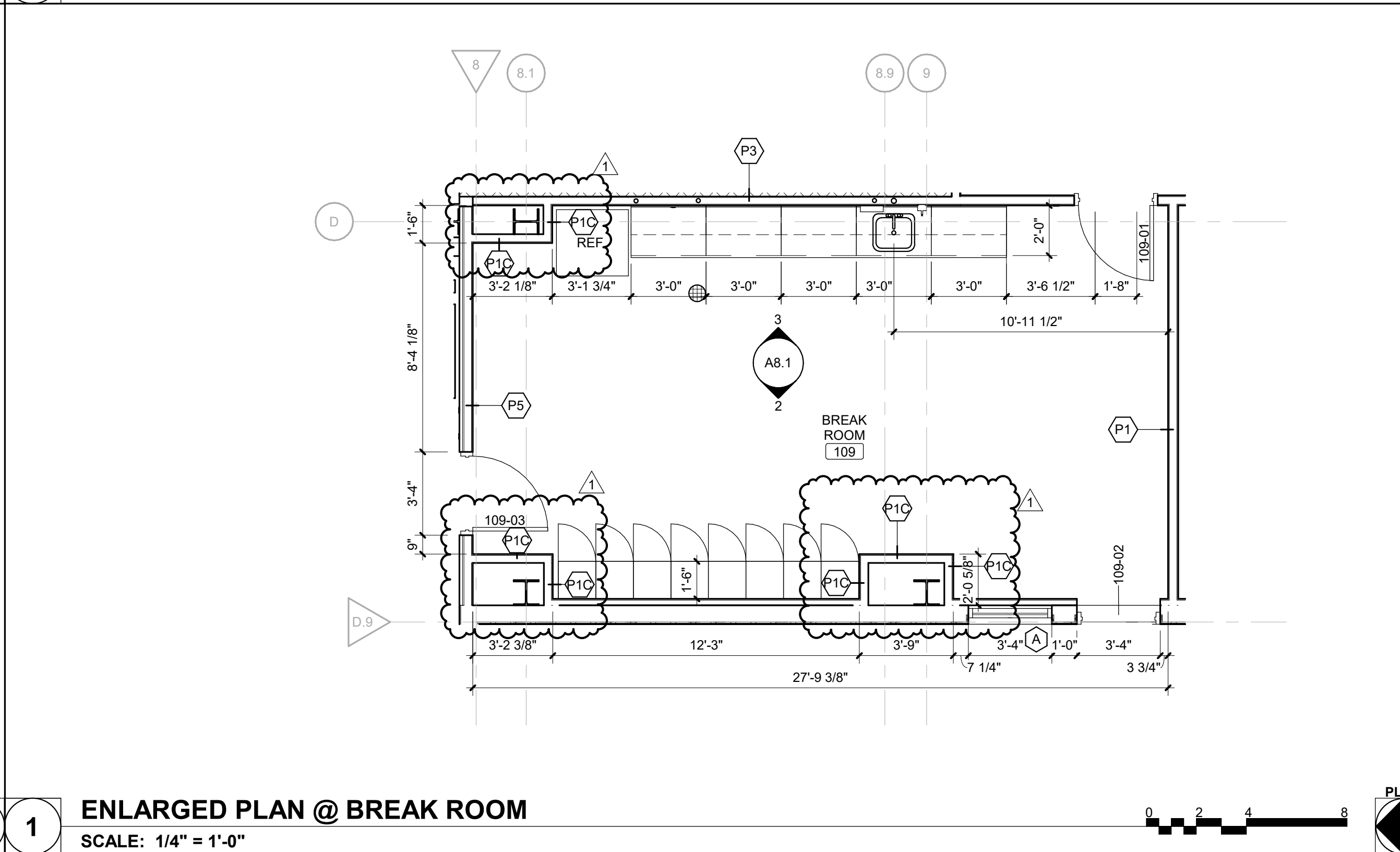
2 109 BREAK ROOM WEST ELEVATION  
SCALE: 1/2" = 1'-0"



6 T112 WOMEN'S RESTROOM NORTH ELEVATION  
SCALE: 1/2" = 1'-0"



4 ENLARGED PLAN @ RESTROOMS T111 & T112  
SCALE: 1/4" = 1'-0"



1 ENLARGED PLAN @ BREAK ROOM  
SCALE: 1/4" = 1'-0"

## INTERIOR ELEVATION GENERAL NOTES

- A. SEE G0.1 FOR STANDARD MOUNTING HEIGHTS.
- B. CONTROL JOINTS SHOWN ARE DESIGNATED FOR AESTHETIC PURPOSES, WHERE CONTROL JOINTS ARE NOT SHOWN, COMPLY WITH REQUIREMENTS AS DICTATED IN THE PARTITION GENERAL NOTES.

## TOILET ACCESSORY SCHEDULE

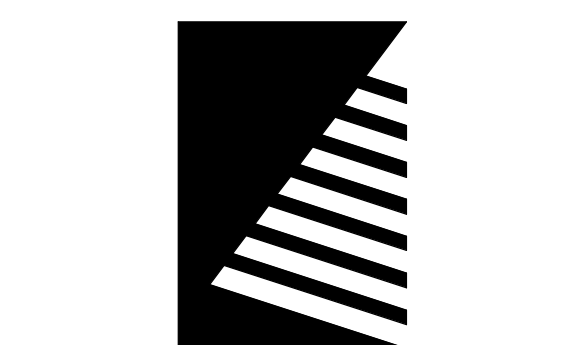
MARK	DESCRIPTION	REMARKS
T1	GRAB BAR (42")	
T2	GRAB BAR (36")	
T3	GRAB BAR (18")	
T4	TOILET TISSUE DISPENSER	
T5	PAPER TOWEL DISPENSER	
T6	LIQUID SOAP DISPENSER	
T7	MIRROR UNIT	
T8	SANITARY NAPKIN DISPOSAL	
T9	UNDERLAVATORY GUARD	
T10	DIAPER CHANGING STATION	
T11	THROUGH PARTITION SANITARY NAPKIN DISPOSAL	
T12	THROUGH PARTITION TOILET TISSUE DISPENSER	
T13	SHOWER BENCH	
T14	SHOWER GRAB BAR	
T15	TOWEL BAR	
T16	ROBE HOOK	
T17	PAPER TOWEL DISPENSER TRASH COMBO	
T18	HAND DRYER	

## CASEWORK SCHEDULE

NO.	WIDTH	HEIGHT	DEPTH	DETAIL NO.	DESCRIPTION
BASE CABINETS					
B1	3' - 0"	2' - 8 1/2"	2' - 0"		SINK CABINET, TWO HINGED DOORS, 6" FALSE FRONT ABOVE DOORS
B2	3' - 0"	2' - 8 1/2"	2' - 0"		TWO HINGED DOORS, TWO ADJUSTABLE SHELVES
B3	2' - 0"	2' - 8 1/2"	2' - 0"		ONE 6" DRAWER, THREE EQUAL DRAWERS
B4	3' - 0"	2' - 8 1/2"	2' - 0"		
LOCKERS					
L1	1' - 6"	6' - 4"	1' - 6"		SINGLE TIER METAL LOCKERS. SEE NOTE 1.
WALL CABINETS					
W1	3' - 0"	2' - 6"	1' - 2"		TWO HINGED DOORS, TWO ADJUSTABLE SHELVES
W2	3' - 0"	1' - 6"	1' - 2"		TWO HINGED DOORS, TWO ADJUSTABLE SHELVES
W3	2' - 0"	2' - 6"	1' - 2"		TWO HINGED DOORS, TWO ADJUSTABLE SHELVES

## KEYNOTES (BY DIVISION)

DIVISION 03	
03.01	CONCRETE STOOP - SEE CIVIL
03.02	4" THICK CONCRETE HOUSEKEEPING PAD - SEE STRUCTURAL
DIVISION 07	
07.01	DOWNSPOUT
07.02	SNOW GUARD 2'-0" FROM ROOF EDGE
DIVISION 08	
08.01	OVERHEAD DOOR AND TRACK. REFER TO DETAILS ON A7.2 FOR MORE INFORMATION.
DIVISION 09	
09.01	PRE-FINISHED METAL LINER PANEL PER PEB MFR AT WASHBAY ROOF STRUCTURE.
DIVISION 10	
10.01	INSTALL BOLLARD AT STRUCTURAL COLUMN IN GARAGE BAYS. TYPICAL ALL COLUMNS UNO. REFER TO DETAIL ON A7.2 FOR MORE INFORMATION.
10.02	FIRE EXTINGUISHER BRACKET
10.03	COLLISION GUARDRAIL AT CORNER COLUMNS. SEE DETAIL ON SHEET A7.2
DIVISION 11	
11.01	INSTALL VEHICLE LIFT PER MANUFACTURERS WRITTEN INSTRUCTIONS. REFER TO SPECIFICATIONS FOR MORE INFORMATION.
11.02	REFRIGERATOR PROVIDED BY OWNER, INSTALLED BY CONTRACTOR. COORDINATE WITH OWNER PRIOR TO ORDERING CASEWORK.
11.03	WALL MOUNTED LADDER FOR MEZZANINE ACCESS. SEE DETAILS ON A6.1 FOR MORE INFORMATION.
11.04	AIR COMPRESSOR. COORDINATE LOCATION WITH OWNER.
11.05	GLYCOL FEEDER - SEE MECHANICAL
DIVISION 12	
12.01	CASEWORK. REFER TO ELEVATIONS ON A8.1 & A8.2 FOR MORE INFORMATION.
12.02	LOCKERS PROVIDED AND INSTALLED BY CONTRACTOR. MIN 5% ADA COMPLIANT
DIVISION 13	
13.01	METAL LINER PANELS TO 8'-0" A.F.F.
13.02	METAL LINER PANELS ABOVE CMU TO STRUCTURE.
13.03	METAL LINER PANELS TO STRUCTURE.
DIVISION 22	
22.01	WATER SPIGOT - SEE PLUMBING
22.02	OIL WASTE STORAGE TANK - SEE PLUMBING
22.03	FLOOR CLEANOUT - SEE PLUMBING
22.04	WATER HEATER - SEE PLUMBING
22.05	FLOOR DRAIN - SEE PLUMBING
22.06	ADA FLOOR MOUNTED, MANUAL FLUSH-VALVE TOILET - SEE PLUMBING
22.07	ADA WALL MOUNTED LAVATORY - SEE PLUMBING
22.08	WALL MOUNTED, MANUAL FLUSH-VALVE URINAL - SEE PLUMBING
22.09	UNDERLAVATORY GUARD
DIVISION 23	
23.01	INSTALL TRENCH DRAINS AT EACH BAY. REFER TO PLUMBING DRAWINGS FOR MORE INFORMATION.
23.02	FURNACE - SEE MECHANICAL
23.03	ELEC. HEATER - SEE MECHANICAL
23.04	CONDENSER - SEE MECHANICAL
23.05	RADIANT MANIFOLD - SEE MECHANICAL
23.06	SECONDARY PUMP - SEE MECHANICAL
23.07	EXPANSION TANK - SEE MECHANICAL
23.08	BOILER - SEE MECHANICAL
23.09	BOILER PUMP - SEE MECHANICAL
23.10	HVAC DAMPER - SEE MECHANICAL
23.11	EXHAUST DUCT - SEE MECHANICAL
DIVISION 26	
26.01	LIGHT FIXTURES MOUNTED TO UNISTRUT. REFER TO ELECTRICAL DRAWING FOR MORE INFORMATION.
26.02	ENSURE LIGHT FIXTURES CLEAR OVERHEAD DOOR TRACK, TYP. ALL OVERHEAD DOORS.
26.03	FIRE ALARM PANEL - SEE ELECTRICAL
26.04	CONTROL PANEL - SEE ELECTRICAL
26.05	SINGLE PHASE PANELBOARD - SEE ELECTRICAL
26.06	GROUND BAR - SEE ELECTRICAL
26.07	FUSE DISCONNECT SWITCH - SEE ELECTRICAL
26.08	UTILITY METER - SEE ELECTRICAL
26.09	ELECTRIC STARTER - SEE ELECTRICAL



Farnsworth  
GROUP

2211 W. BRADLEY AVENUE  
CHAMPAIGN, ILLINOIS 61821  
(217) 352-7408 / info@f-w.com

www.f-w.com  
Engineers | Architects | Surveyors | Scientists

ISSUE:  
# DATE: DESCRIPTION:

1 04/25/2022 ADDENDUM 2

100% Permit & Bid Set  
04/06/2022

PROJECT:  
Crawford County Highway  
Department (CCHD)

Shop & Office

10312 N 900th Street  
Robinson, IL 62454

DATE: 04/06/2022

DESIGNED: SCB/PNM

DRAWN: PNM/

REVIEWED: SCB

SHEET TITLE:

INTERIOR  
ELEVATIONS AND  
ENLARGED PLANS

SHEET NUMBER:

A8.1

PROJECT NO.: 0210855.00